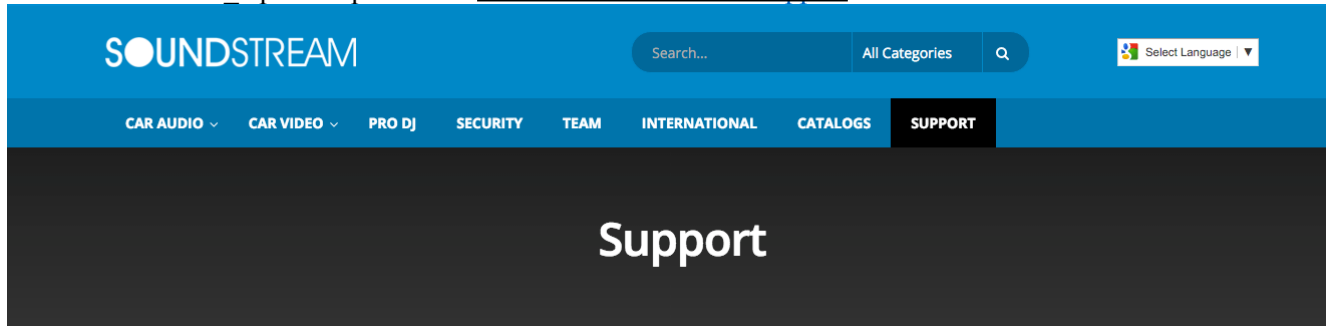


MHL Update

- 1) Download the SW_Update zip file from www.soundstream.com/support



Technical Support

Technical support is available Monday through Friday from 8AM PST to 4:30PM PST at (323)724-4600. If Tech Support is busy, please leave a message and you will get a return call within 24 hours.

For faster service, please email tech-support@soundstream.com

Please double click on the MHL SW Update. this will open a pop up window indicating the download has started

Download Updates

[Instructions for Ingenix Emergency Update](#)

[Accord Update](#)

[Elantra-Optima Update](#)

[Sonata Update](#)

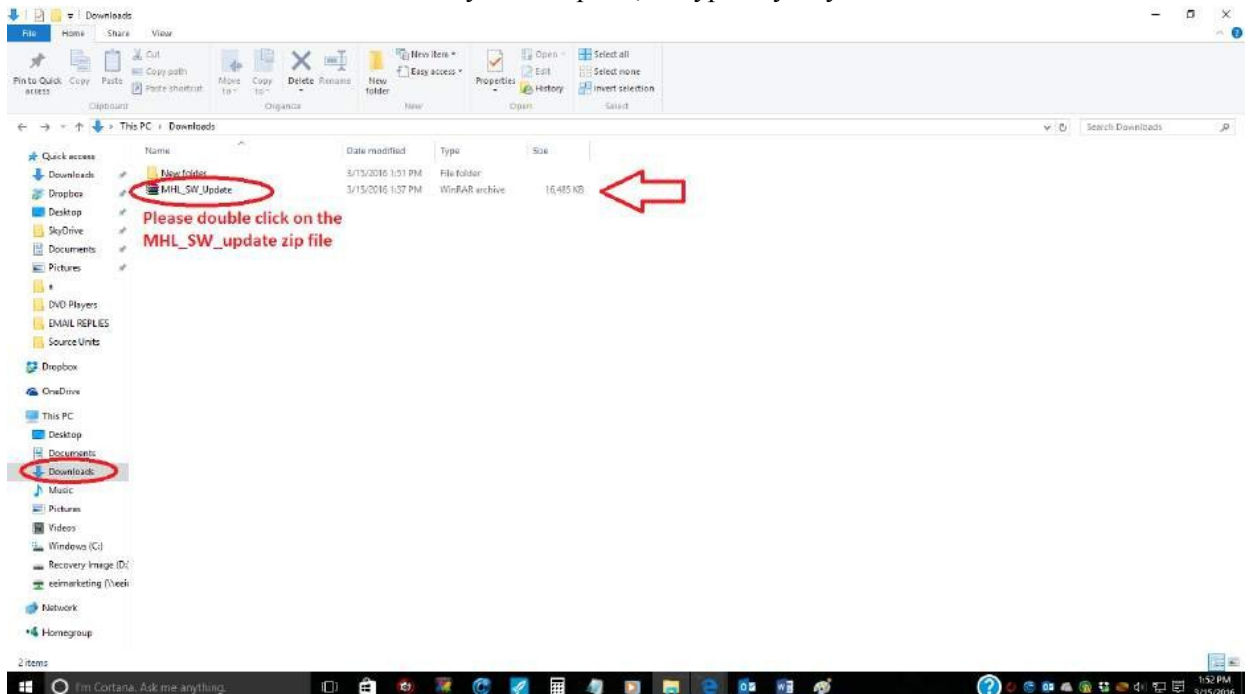
[MHL MobileLink Software Update](#)

[MHL SW Update \[.zip\]](#)

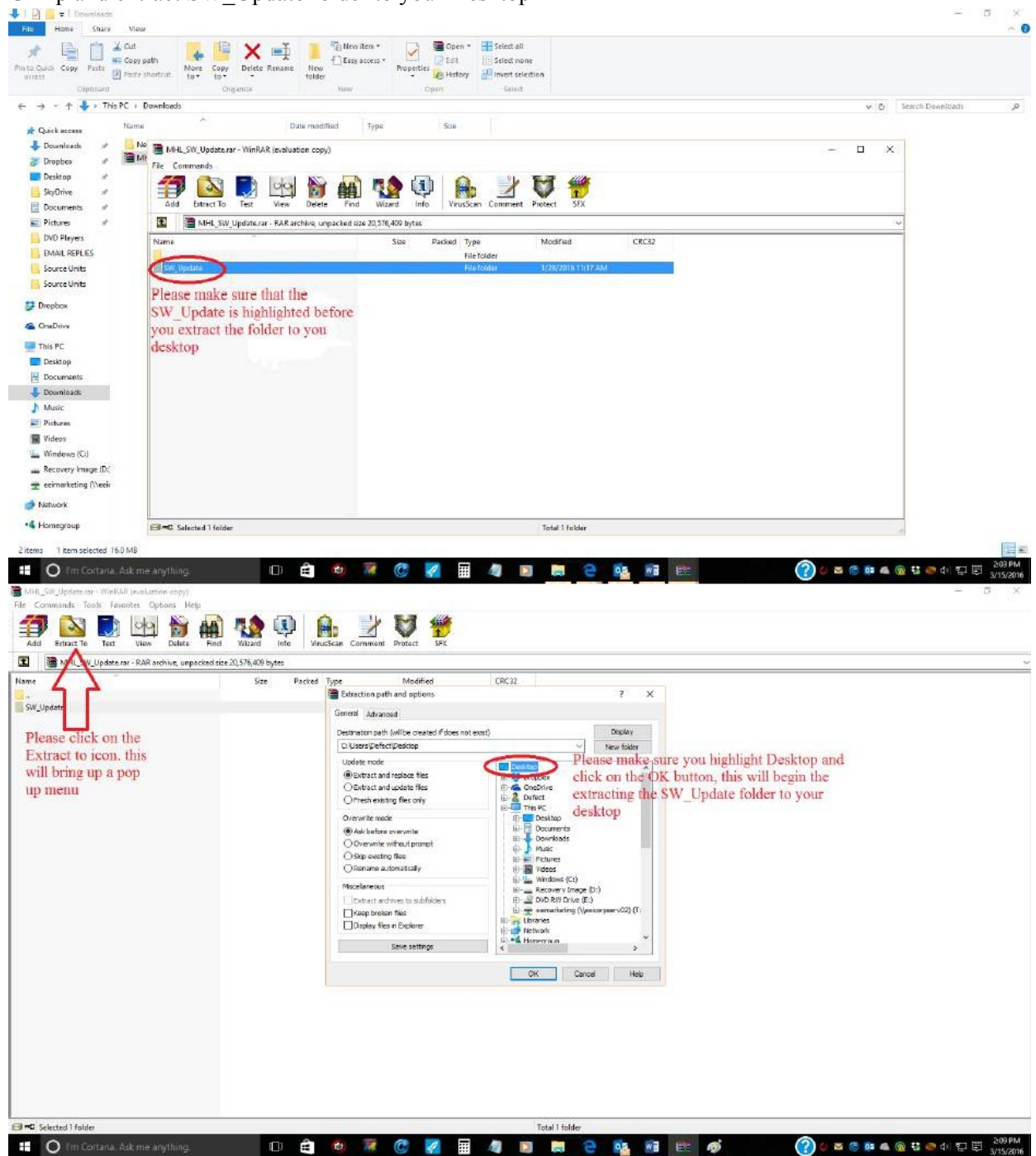
[Discontinued Owner Manuals](#)

Parts

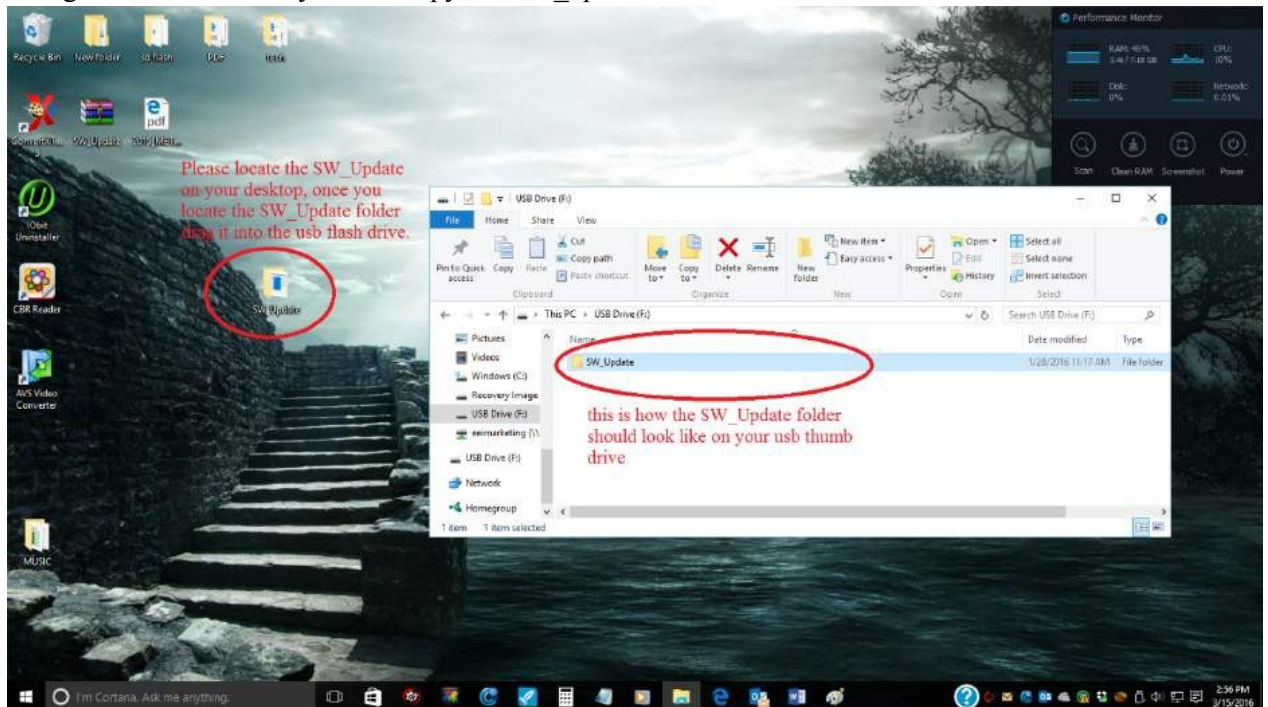
- 2) You will have to find the download on your computer, its typically in your download folder



3) Unzip and extract SW_Update folder to your Desktop



- 4) Using a Usb Flash drive you will copy the SW_update folder onto the Usb Flash Drive



- 5) With the unit powered off you will insert the Usb thumb drive into the unit



- 6) When you power on the radio it will load in the update screen, you will leave both boxes unchecked, you will not be using them, you will proceed and tab the update button

RunCnt: 69

☐ AutoStart

HCN SW Update

MTK 1.4.06.16

Exit

please leave these 2 boxes un-check you will not be using them

OS

☐ APP Update OS

FIRMWARE

☒ 1. APP

☐ 2. MCU

STATUS

INSTALLED VERSION

HC_Base_2016.03.09.11_B

20150729

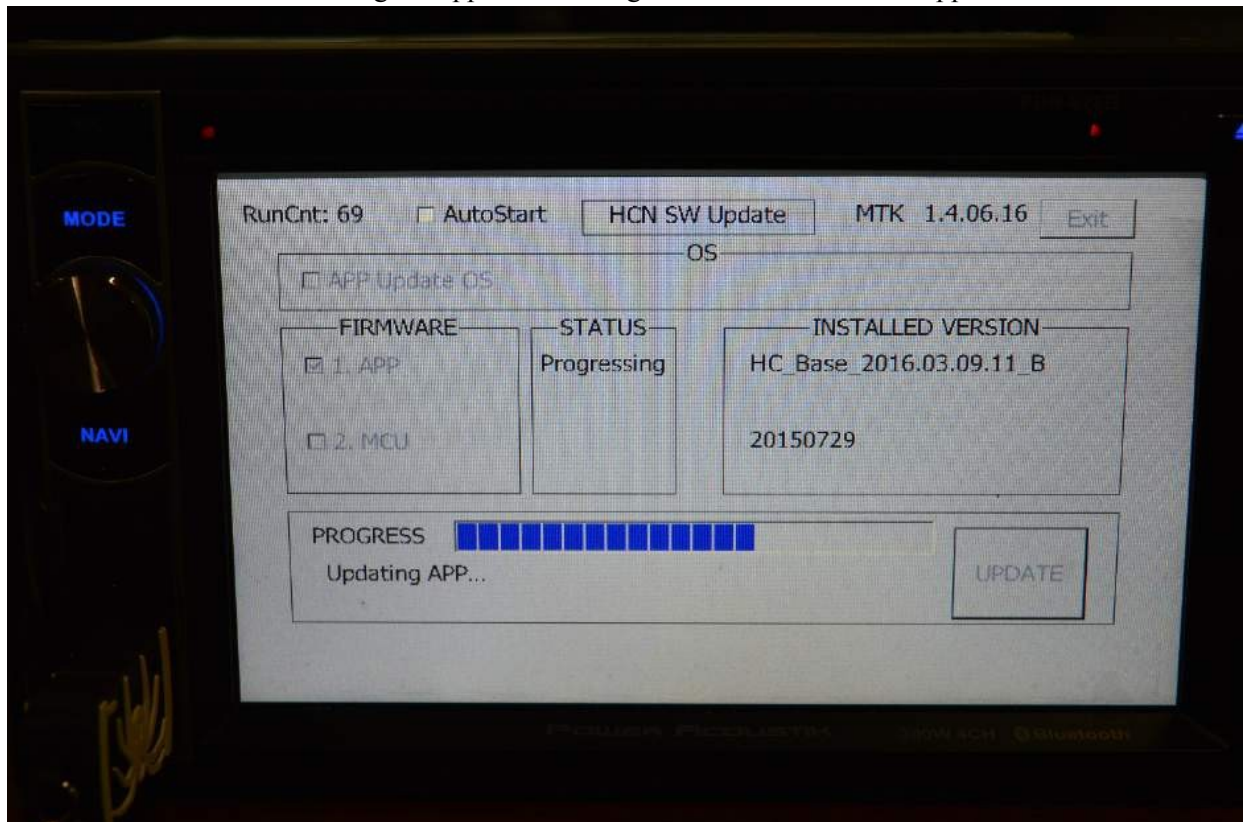
PROGRESS

UPDATE

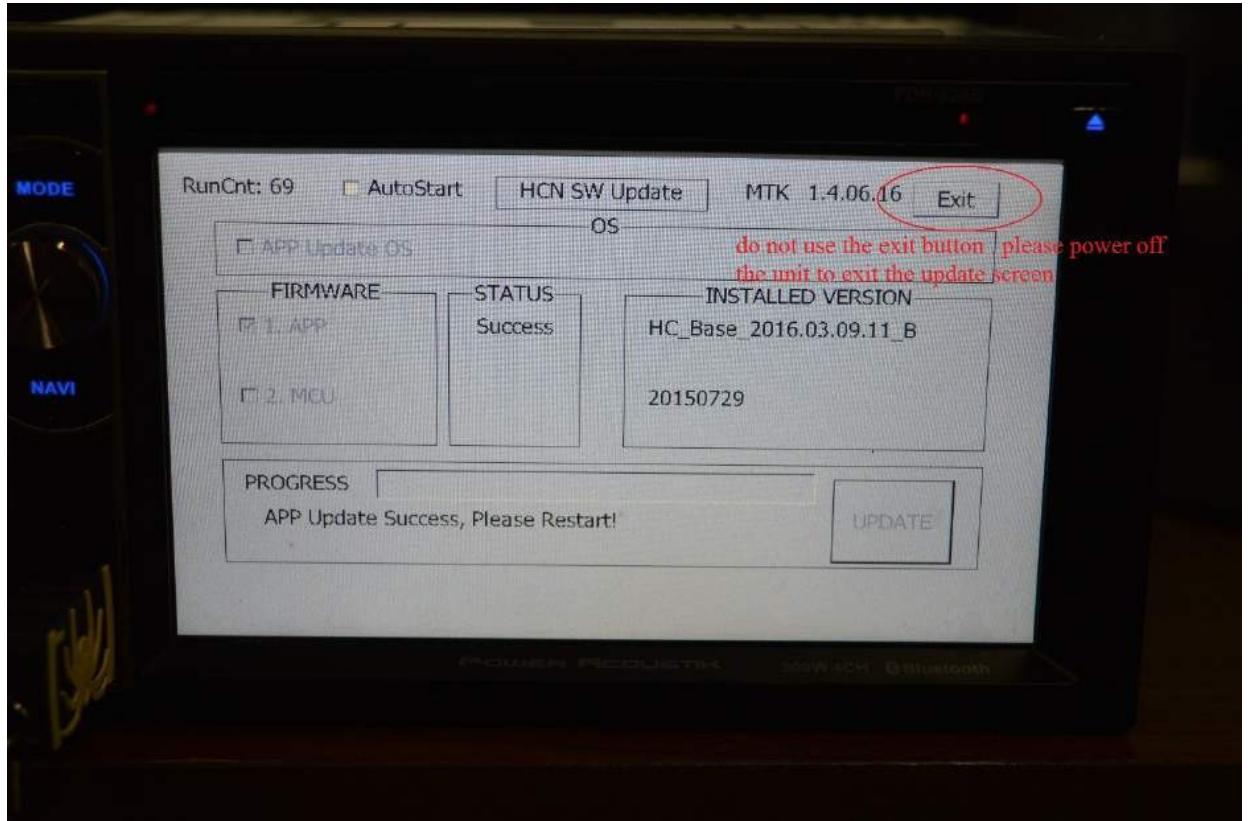
POWER REQUIRED

10W 3CH Bluetooth

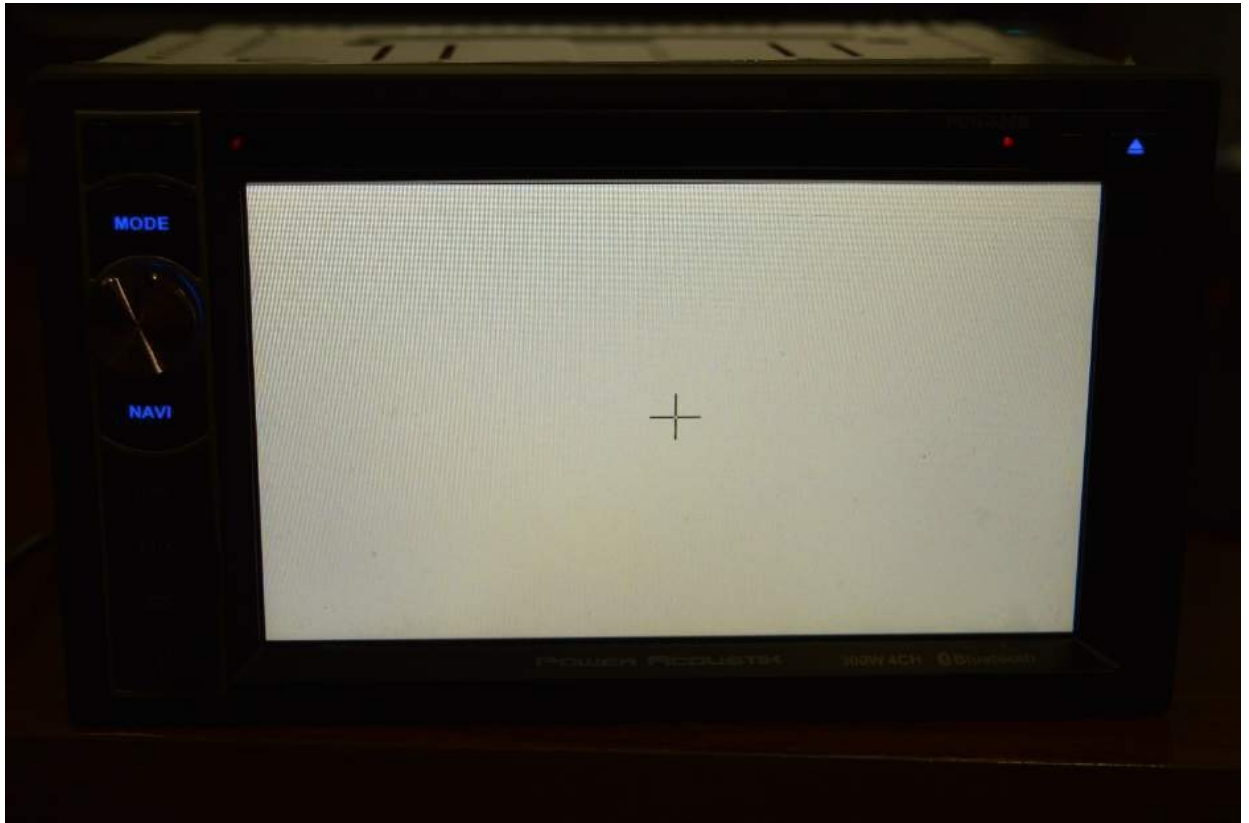
- 7) Next the unit will delete the original app on it and begin to download the new app



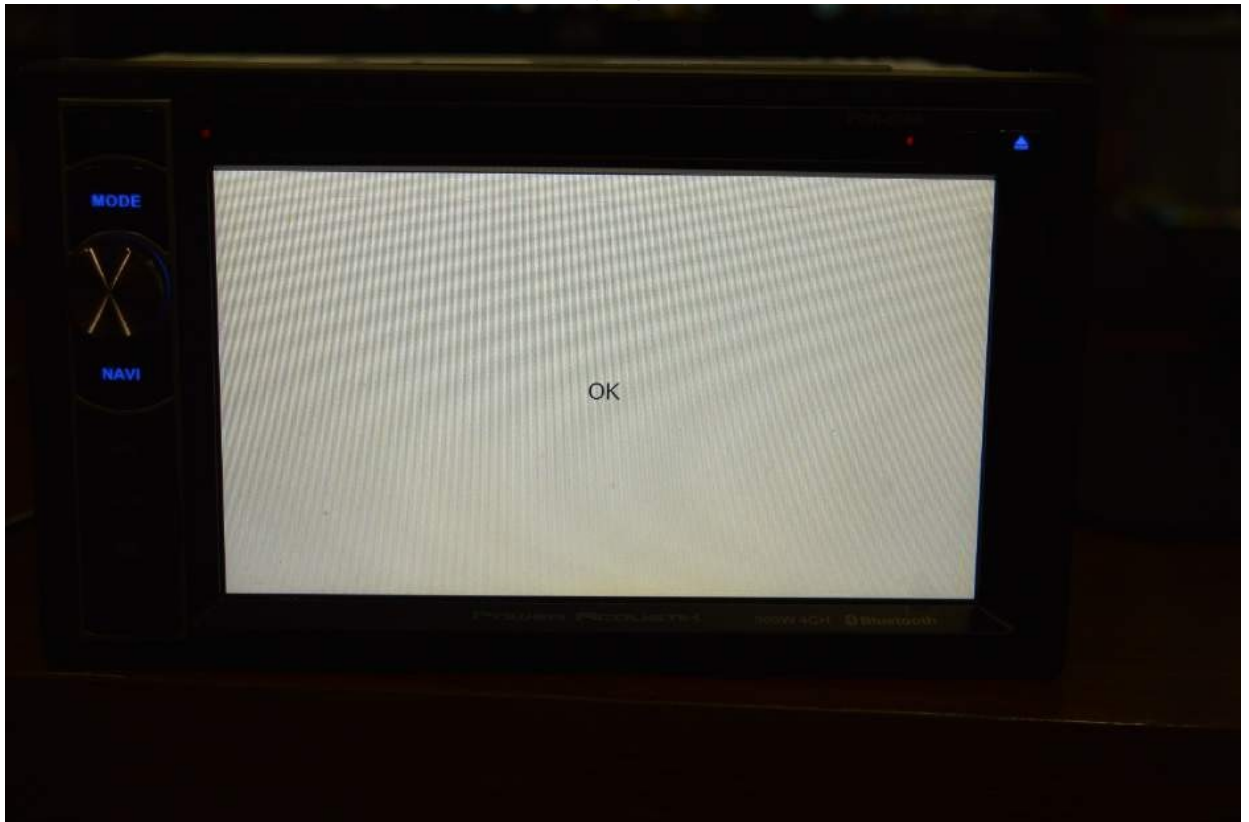
- 8) Once the update is complete you will power off the unit to exit the update screen. DO NOT HIT THE EXIT BUTTON ON THE SCREEN. Once powered off remove the usb and reboot the radio



- 9) Now that the usb is removed power on the unit, once powered on you will see a cross hair to calibrate the touch screen. Touch the cross hairs as they move around on the screen,



10) You will see an ok in the center of the screen verifying the calibration was a success



- 11) The unit will then power up into radio mode. You will select the home button on the top left hand corner to enter the main menu screen and select the mobilelink x2



12) The screen will take a sec to load up the new mobile link screen



- 13) Please make sure you usb debugging is turned on as well as your unknown sources. You will find unknown source under the security icon in settings and usb debugging will be under developer options icon
- 14) If your developer options are not enable please to go (About) and find (Build number) tab the build number seven times, this will enable developer options, you will need to go back into setting and find the developer options tab, then click on usb debugging to enable it