

2017

SPEAKERS

SOURCE UNITS

SUBWOOFERS

AMPLIFIERS

MOTOR SPORTS

ATVs

SOUNDSTREAM



SOUNDSTREAM

SOUNDSTREAM.COM

THE ULTIMATE LISTENING EXPERIENCE

Dual Display Source Unit

Soundstream's Dual Display Multimedia System is the first of it's kind, enabling multitask functionality in a car stereo application. Concurrent operating systems running simultaneously allow the user to operate the two different platforms. The user has the option to control the included iGO powered GPS system on the upper display, or Android PhoneLink which mirrors the screen of their enabled smart device. The second operating system includes typical features of a car multimedia system; DVD, Bluetooth Connectivity, audio/video media playback by USB, FM receiver, rear view camera, etc.

Extensive details were considered for the build of this unique application. Each high resolution TFT-LCD display includes a capacitive touch screen panel, mimicking the interaction and experience of today's smart devices. In efforts to ensure mechanical reliabilities, the independent motorization mechanisms use alloy steel gearing and high torque drive motors, capable of standing up to the abuse of today's road conditions.

Attention to quality of the user's interaction were consider in the design phase of the dual display's user interface. Large format, easy to read info-data and icons were drawn to improve the ease of use. The user interface concept included solutions to reduce driver distraction and improve operator awareness.

- Worlds first head unit w/ Two independent 7" Displays!
- Two Motorized 7" LCD Touch Screens in one 2-DIN chassis
- Watch videos and iGo GPS navigation simultaneously
- Control your Android Mobile Phone with PhoneLink
- But Wait, there's more....

NEW FOR
2017

Dual Display Source Unit

VRN-DD7HB
2-DIN GPS Navigation, DVD, CD/MP3, AM/FM Receiver w/ Dual 7" LCD Touch Screens, Android PhoneLink, & Bluetooth 4.0 Connectivity



- Additional Dual Display Details:**

 - SmartSense Glass Panel Touch Screen Technology
 - Bluetooth V4.0 Hands-Free Calling from Enabled Phone
 - A2DP Wireless MP3 Audio Playback from Enabled Device
 - Built-in Front Panel Bluetooth Microphone
 - Accepts OEM Steering Wheel Control Interfaces
 - Playback from DVD & CD of MP3, MP4 & Other Video
 - Playback from 64GB USB of MP3, MP4 & Other Video (rear)
 - 2A 5V Adaptive Fast Charge of Mobile Devices (rear)
- ID3 MP3 Tag Reading for Track & Artist Information
 - Rear Audio/Video Input for Personal Media Devices
 - Front & Rear RCA Pre-Amp Audio Outputs
 - Subwoofer RCA Pre-Amp Audio Output
 - Video Output for Auxiliary Devices
 - Rear View Camera Input w/ Trigger
 - 300w 4ch. MOSFET Speaker Outputs
 - Multi-Region FM Frequency Stepping
 - 800x480 Widescreen Resolution

AptiX Source Units



AptiX operating systems use an advanced microprocessors and central processing unit bringing lightning fast reaction time into automotive multimedia entertainment systems. Premium AptiX units feature built-in advanced GPS Navigation with Android PhoneLink 2-way MHL complete smart phone integration, or Sirius/XM satellite radio interface. Standards for all AptiX models include SmartSense capacitive glass touch panel, Bluetooth V4.0 for hands-free calling, Adaptive Fast Charging of enabled mobile devices, and more. Select AptiX units add multi-color illumination or an advanced audio staging equalizer. Available models include 2-DIN with 6.2" LCD touchscreen, 1-DIN with 7" LCD touchscreen, 1-DIN with 3.4" LCD, and even a 2-DIN with 10.3" LCD touchscreen!



Premium Aptix Source Units feature GPS turn-by-turn navigation for all 50 United States, powered by iGo Primo. Set your destination to one of nearly 17 million available points of interest, or your own unique location. Follow the on-screen directions or audible text-to-speech commands, including lane departure guidance. Additional features include favorites list, programmable home destination, destination fuel estimates, multi-lingual, multi-gender voices, speed limit warnings, and more! Map updates available from Naviextras.com.



Android PhoneLink

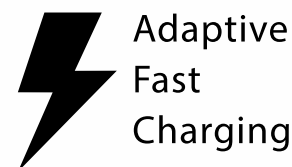
Premium Aptix GPS Navigation source units also include Android PhoneLink mobile device integration. PhoneLink enables complete control of select Android smartphones and tablets by the Aptix operating system. Conveniently launch any

application, post social media updates, or play your own videos and all other content on your mobile device. Your smart device display is mirrored to the head units larger LCD screen via simple USB connection. Android PhoneLink ensures safe, hands-free operation of your smart device without distraction.



Everything, Everywhere

In addition to Aptix's great features, select models include interface for SiriusXM's satellite radio tuner SXV300 (sold separately). Welcome to commercial-free music from every genre, live play-by-play sports, the biggest news and talk, and the hottest entertainment at your fingertips, 24/7. Enjoy over 140 channels, including commercial-free music plus the best sports, news, talk, comedy and entertainment. SiriusXM signal coverage spans over 3.7 million square miles, coast to coast. No longer will you worry about losing radio reception...



2A Adaptive Fast Charging

We demand top performance of our mobile devices to meet our social media and content streaming needs. To keep up with rapidly changing design trends, our mobile devices tend to rely on limited energy capacity, utilizing every efficiency to prolong the charge of the battery. Select AptiX source units feature USB Adaptive Fast Charge technology, reducing necessary down time to get you moving again. AFC has the potential to recharge enabled mobile device batteries from zero to up to 50% in about 30 minutes. (USB cable not included)



Bluetooth 4.0 Connectivity

Bluetooth 4.0 with Enhanced Data Rate increases traditional data transfer rates to 2.1 Mbit/s. This lightning quick information transfer increases clarity & virtually eliminates unwanted distortion during calls and wireless MP3 audio playback. Most Bluetooth enabled Smartphones will transfer phone book contacts, view recent call logs, and stream MP3 audio tracks.

Additional AptiX Details:

SmartSense Glass Panel Touch Screen Technology
Bluetooth V4.0 Hands-Free Calling from Enabled Phone
A2DP Wireless MP3 Audio Playback from Enabled Device
Built-in Front Panel Bluetooth Microphone
Accepts OEM Steering Wheel Control Interfaces
Playback from DVD & CD of MP3, MP4 & Other Video
Playback from 64GB USB of MP3, MP4 & Other Video
2A 5V Adaptive Fast Charge of Mobile Devices

ID3 MP3 Tag Reading for Track & Artist Information
Rear Audio/Video Input for Personal Media Devices
Front & Rear RCA Pre-Amp Audio Outputs
Subwoofer RCA Pre-Amp Audio Output
Video Output for Auxiliary Devices
Rear View Camera Input w/ Trigger
300w 4ch. MOSFET Speaker Outputs
Multi-Region FM Frequency Stepping
800x480 Widescreen Resolution

1030 Series Source Units



NEW FOR
2017

VR-1032XB
2-DIN DVD, CD/MP3, AM/FM Receiver w/ Sirius/XM Tuner Interface, Bluetooth 4.0 Connectivity, & 10.3" LCD Touchscreen



2-DIN with 10.3" Detachable LCD!

SiriusXM Satellite Radio Ready!



VR-1032XB	
iGo GPS	-
PhoneLink	-
SiriusXM Ready	Yes

Standard Features & Specifications	
Chassis	ISO 2-Din, Sleeve Included
LCD Size/Type	10.3" 800x480 16:9 Aspect Ratio
Touchscreen	SmartSense Capacitive Touch
Detachable	Yes
Bluetooth 4.0	Phone Calling + A2DP Audio Streaming
Disc Playback	720P MP4 & WMV; MP3 & WMA Audio
USB Playback	64GB; 720P MP4, WMV, WMA; MP3
AUX Input	3.5mm AUX Audio Input
SWC Control	Accepts OEM SWC Interfaces
Audio Outputs	Front + Rear + Subwoofer, 2V
Video Output	RCA Composite, 500mV
Rear Camera	RCA Composite w/ +12V Trigger



75 Series Source Units

VRN-75HXB - iGo GPS Navigation + Android PhoneLink + SiriusXM Tuner Ready + Standards

VRN-75HB - iGo GPS Navigation + Android PhoneLink + Standards

VR-75XB - SiriusXM Tuner Ready + Standards

VR-75B - Standard Features

ISO 1-DIN DVD, CD/MP3, AM/FM Receiver w/ Bluetooth 4.0 Connectivity, & 7" Touchscreen LCD

NEW FOR
2017



DVD



75 SERIES	VRN-75HXB	VRN-75HB	VR-75XB	VR-75B
iGo GPS	Primo 9.0	Primo 9.0	-	-
PhoneLink	Android	Android	-	-
SiriusXM Ready	Yes	-	Yes	-

Standard Features & Specifications

Chassis	ISO 1-Din, Sleeve Included
LCD Size/Type	7" 800x480 16:9 Aspect Ratio
Touchscreen	SmartSense Capacitive Touch
Detachable	Lower Faceplate, Carry Case Included
Bluetooth 4.0	Phone Calling + A2DP Audio Streaming
Disc Playback	DVD: 720P MP4/MP3, WMV; CD: MP3, WMA
USB Playback	64GB; 720P MP4, WMV, WMA; MP3
AUX Input	3.5mm AUX Audio Input
SWC Control	Accepts OEM SWC Interfaces
Audio Outputs	Front + Rear + Subwoofer, 2V
Video Output	RCA Composite, 500mV
Rear Camera	RCA Composite w/ +12V Trigger

65 Series Source Units



iGo GPS Navigation + Android PhoneLink + SiriusXM Tuner Ready + Standards - **VRN-65HXB**

iGo GPS Navigation + Android PhoneLink + Standards - **VRN-65HB**

SiriusXM Tuner Ready + Standards - **VR-65XB**

Standard Features - **VR-65B**

ISO 2-DIN DVD, CD/MP3, AM/FM Receiver w/ Bluetooth 4.0 Connectivity, & 6.2" Touchscreen LCD

NEW FOR
2017



DVD



65 SERIES	VRN-65HXB	VRN-65HB	VR-65XB	VR-65B
iGo GPS	Primo 9.0	Primo 9.0	-	-
PhoneLink	Android	Android	-	-
SiriusXM Ready	Yes	-	Yes	-

Standard Features & Specifications

Chassis	ISO 2-Din, Sleeve Included
LCD Size/Type	6.2" 800x480 16:9 Aspect Ratio
Touchscreen	SmartSense Capacitive Touch
Detachable	-
Bluetooth 4.0	Phone Calling + A2DP Audio Streaming
Disc Playback	DVD: 720P MP4/MP3, WMV; CD: MP3, WMA
USB Playback	64GB; 720P MP4, WMV, WMA; MP3 (rear)
AUX Input	RCA Audio Inputs (rear)
SWC Control	Accepts OEM SWC Interfaces
Audio Outputs	Front + Rear + Subwoofer, 2V
Video Output	RCA Composite, 500mV
Rear Camera	RCA Composite w/ +12V Trigger



63 Series Source Units

VRN-63HB - iGo GPS Navigation + Android PhoneLink + Standards

VR-63XB - SiriusXM Tuner Ready + Standards

VR-63B - Standard Features

ISO 2-DIN DVD, CD/MP3, AM/FM Receiver w/ Bluetooth 4.0 Connectivity, & 6.2" Touchscreen LCD

NEW FOR
2017



DVD



X300 WATT 4CH. AMPLIFIER



63 SERIES	VRN-63HB	VR-63XB	VR-63B
iGo GPS	Primo 9.0	-	-
PhoneLink	Android	-	-
SiriusXM Ready	-	Yes	-

Standard Features & Specifications

Chassis	ISO 2-Din, Sleeve Included
LCD Size/Type	6.2" 800x480 16:9 Aspect Ratio
Touchscreen	Resistive Touchscreen
Detachable	-
Bluetooth 4.0	Phone Calling + A2DP Audio Streaming
Disc Playback	720P MP4 & WMV; MP3 & WMA Audio
USB Playback	64GB; 720P MP4, WMV, WMA; MP3
AUX Input	3.5mm AUX Audio Input
SWC Control	Accepts OEM SWC Interfaces
Audio Outputs	Front + Rear + Subwoofer, 2V
Video Output	RCA Composite, 500mV
Rear Camera	RCA Composite w/ +12V Trigger

62 Series Source Units



VR-624B

ISO 2-DIN DVD, CD/MP3, AM/FM Receiver w/ Bluetooth 4.0 Connectivity, & 6.2" Touchscreen LCD

NEW FOR
2017



X300 WATT 4CH. AMPLIFIER



DVD



VR-624B	
Chassis	ISO 2-Din, Sleeve Included
LCD Size/Type	6.2" 800x480 16:9 Aspect Ratio
Touchscreen	Resistive Touchscreen
Detachable	-
Bluetooth 4.0	Phone Calling + A2DP Audio Streaming
Disc Playback	720P MP4 & WMV; MP3 & WMA Audio
USB Playback	64GB; 720P MP4, WMV, WMA; MP3
AUX Input	3.5mm AUX Audio Input
SWC Control	Accepts OEM SWC Interfaces
Audio Outputs	Front + Rear + Subwoofer, 2V
Video Output	RCA Composite, 500mV
Rear Camera	RCA Composite w/ +12V Trigger

NEW FOR
2017

SiriusXM Tuner Ready + Standard Features - **VR-345XB**

Standard Features - **VR-345B**

1-DIN DVD, CD/MP3, AM/FM Receiver w/ Bluetooth Connectivity, & Detachable 3.4" LCD



DVD

X300 WATT 4CH. AMPLIFIER



	VR-345XB	VR-345B
iGo GPS	-	-
PhoneLink	-	-
SiriusXM Ready	Yes	-

Standard Features & Specifications

Chassis	ISO 1-Din, Sleeve Included
LCD Size/Type	3.4" 720x420 16:9 Aspect Ratio
Touchscreen	-
Detachable	Faceplate, Carry Case Included
Bluetooth 4.0	Phone Calling + A2DP Audio Streaming
Disc Playback	720P MP4 & WMV; MP3 & WMA Audio
USB Playback	64GB; 720P MP4, WMV, WMA; MP3
AUX Input	3.5mm AUX Audio Input
SWC Control	Accepts OEM SWC Interfaces
Audio Outputs	Front + Rear + Subwoofer, 2V
Video Output	RCA Composite, 500mV
Rear Camera	RCA Composite w/ +12V Trigger

MobileLink AVN Source Units

VRN-64HB - iGo GPS Navigation + Android MobileLink
ISO 2-DIN DVD, CD/MP3, AM/FM Receiver w/ Bluetooth, & 6.2" LCD



VRN-64HB	
iGo GPS	Primo 9.0
MobileLink	Android 5.0 +
SiriusXM Ready	-
Standard Features & Specifications	
Chassis	ISO 2-Din, Sleeve Included
LCD Size/Type	6.2" 800x480 16:9 Aspect Ratio
Touchscreen	Resistive Touchscreen
Detachable	-
Bluetooth 4.0	Phone Calling + A2DP Audio Streaming
Disc Playback	720P MP4 & WMV; MP3 & WMA Audio
USB Playback	64GB; 720P MP4, WMV, WMA; MP3
AUX Input	3.5mm AUX Audio Input
SWC Control	Accepts OEM SWC Interfaces
Audio Outputs	Front + Rear + Subwoofer, 2V
Video Output	RCA Composite, 500mV
Rear Camera	RCA Composite w/ +12V Trigger







VRN-74HB	
iGo GPS	Primo 9.0
MobileLink	Android 5.0 +
SiriusXM Ready	-
Standard Features & Specifications	
Chassis	ISO 1-Din, Sleeve Included
LCD Size/Type	7" 800x480 16:9 Aspect Ratio
Touchscreen	Resistive Touchscreen
Detachable	Lower Faceplate
Bluetooth 4.0	Phone Calling + A2DP Audio Streaming
Disc Playback	720P MP4 & WMV; MP3 & WMA Audio
USB Playback	64GB; 720P MP4, WMV, WMA; MP3
AUX Input	3.5mm AUX Audio Input
SWC Control	Accepts OEM SWC Interfaces
Audio Outputs	Front + Rear + Subwoofer, 2V
Video Output	RCA Composite, 500mV
Rear Camera	RCA Composite w/ +12V Trigger


VRN-74HB - iGo GPS Navigation + Android MobileLink
ISO 1-DIN DVD, CD/MP3, AM/FM Receiver w/ Bluetooth, & 7" LCD



Multimedia Source Units

VR-651B
2-DIN DVD, CD/MP3, USB/SD, AM/FM Receiver w/ Bluetooth Connectivity & 6.5" LCD

VR-651B	
Chassis	ISO 2-Din, Sleeve Included
LCD Size/Type	6.5" 800x480 16:9 Aspect Ratio
Touchscreen	Resistive Touchscreen
Detachable	-
Bluetooth 4.0	Phone Calling + A2DP Audio Streaming
Disc Playback	720P MP4 & WMV; MP3 & WMA Audio
USB Playback	64GB; 720P MP4, WMV, WMA; MP3
AUX Input	3.5mm AUX Audio Input
SWC Control	Accepts OEM SWC Interfaces
Audio Outputs	Front + Rear + Subwoofer, 2V
Video Output	RCA Composite, 500mV
Rear Camera	RCA Composite w/ +12V Trigger











VIR-7830B
1-DIN DVD, CD/MP3, USB/SD, AM/FM Receiver w/ Bluetooth Connectivity & 7" LCD



VIR-7830B	
Chassis	ISO 1-Din, Sleeve Included
LCD Size/Type	7" 800x480 16:9 Aspect Ratio
Touchscreen	Resistive Touchscreen
Detachable	Lower Faceplate
Bluetooth 4.0	Phone Calling + A2DP Audio Streaming
Disc Playback	720P MP4 & WMV; MP3 & WMA Audio
USB Playback	64GB; 720P MP4, WMV, WMA; MP3
AUX Input	3.5mm AUX Audio Input
SWC Control	Accepts OEM SWC Interfaces
Audio Outputs	Front + Rear + Subwoofer, 2V
Video Output	RCA Composite, 500mV
Rear Camera	RCA Composite w/ +12V Trigger





Multimedia Source Units

VR-732B

1-DIN DVD, CD/MP3, USB/SD, AM/FM Receiver w/ Bluetooth Connectivity & Motorized 7" Touchscreen LCD



NEW FOR
2017

VR-732B	
Chassis	ISO 1-Din, Sleeve Included
LCD Size/Type	7" 800x480 16:9 Aspect Ratio
Touchscreen	Resistive Touchscreen
Detachable	Faceplate, Carry Case Included
Bluetooth 4.0	Phone Calling + A2DP Audio Streaming
Disc Playback	DVD: 720P MP4/MP3, WMV; CD: MP3, WMA
USB Playback	64GB; 720P MP4, WMV, WMA; MP3
AUX Input	3.5mm AUX Audio Input
SWC Control	Accepts OEM SWC Interfaces
Audio Outputs	Front + Rear + Subwoofer, 2V
Video Output	RCA Composite, 500mV
Rear Camera	RCA Composite w/ +12V Trigger



Digital Audio Source Units

CD Playback + Bluetooth 4.0 - VCD-22B

Digital Media Playback + Bluetooth 4.0 - VM-22B

2-DIN CD or Digital Media Player, w/ USB/SD, AM/FM Receiver, & Bluetooth Connectivity

VCD-22B	
Chassis	ISO 2-Din, Sleeve Included
Bluetooth 3.0	Phone Calling + A2DP MP3 Streaming
Disc Playback	CD, CD-R, CD-RW: MP3, WMA
USB/SD Playback	64GB; WMA; MP3
AUX Input	3.5mm AUX Audio Input
Audio Outputs	Front + Rear + Subwoofer, 2V

VM-22B	
Chassis	ISO 2-Din, Sleeve Included
Bluetooth 3.0	Phone Calling + A2DP MP3 Streaming
USB/SD Playback	64GB; WMA; MP3
AUX Input	3.5mm AUX Audio Input
Audio Outputs	Front + Rear + Subwoofer, 2V



VDVD-165

1-DIN DVD Player w/ 32GB USB Playback

Playback from DVDR/RW of MP4
Playback from 32GB USB of MP4
In-Dash, Floor, & Vertical Mounting Brackets Included
DIN Size Trim Ring For In-Dash Mounting Included
Flash Memory for Last Position Recall
Remote Control & IR Repeater Included
OSD On Screen Display
Digital Anti-shock
A/V Pre-amp Outputs, 2V
Dimensions: 6.4" x 6.2" x 2"



CD Playback - VCD-21

CD Playback + Bluetooth 4.0 - VCD-21B

Digital Media Playback + Bluetooth 4.0 - VM-21B

1-DIN CD or Digital Media Player, w/ USB/SD, AM/FM Receiver, & Bluetooth Connectivity

VCD-21B, VCD-21	
Chassis	ISO 1-Din, Sleeve Included
Bluetooth 3.0	Phone Calling + A2DP MP3 Streaming
Disc Playback	CD, CD-R, CD-RW: MP3, WMA
USB/SD Playback	64GB; WMA; MP3
AUX Input	3.5mm AUX Audio Input
Audio Outputs	Front + Rear + Subwoofer, 2V

VM-21B	
Chassis	ISO 2-Din, Sleeve Included
Bluetooth 3.0	Phone Calling + A2DP MP3 Streaming
USB/SD Playback	64GB; WMA; MP3
AUX Input	3.5mm AUX Audio Input
Audio Outputs	Front + Rear + Subwoofer, 2V



Overhead Entertainment

VCM-103DAC - AirCast Wireless Streaming + Android MobileLink + 2 Headphones + Standards
VCM-103DMH - Android MobileLink + Standards
VCM-103DM - Standard Features

Ceiling Mount DVD Entertainment System w/ 10.3" LCD



AirCast Wirelessly Streams Video From Your Smartphone Or Tablet To The Ceiling Monitor.

AirCast Is Compatible w/ Miracast, AirPlay, AllShareCast, DLNA, & Other Video Transfer Platforms via WiFi. (DAC only)

MobileLink Mirrors the Image of Your Smartphone Or Tablet To The Ceiling Monitor via HDM-A3 Interface Cable (sold separate). Powered by MHL. (DAC & DMH only)



Beige, Grey, & Black Colors INCLUDED!!!

HDM-A3
MHL MobileLink Smartphone Mirroring Interface Cable for Select Andriod Devices

HDM-i4
MHL MobileLink Smartphone Mirroring Interface Cable for Select iOS Devices

5ft interface cable unlocks 1080p video and audio playback from enabled mobile devices. Each interface cable features the appropriate micro connector for your mobile device. Soundstream Mobile-Link Interface cables also charge your mobile device. Available for select Android and iOS devices.



103 Series	VCM-103DAC	VCM-103DMH	VCM-103DM
AirCast	Yes	-	-
MobileLink	Requires HDM-A3	Requires HDM-A3	-
Headphones	1 Pair (2) IR 2Ch.	-	-

Standard Features & Specifications	
LCD Size/Type	10.3" 1,024 x 600 16:9 Aspect Ratio
Disc Playback	1,080P MP4 & AVI
USB Playback	1,080P MP4 & AVI
FM Transmitter	330 Channel
IR Transmitter	Single Channel 2.3MHz
Audio Outputs	Stereo Audio RCA, 2V, top panel
Video Output	RCA Composite, 500mV, top panel
A/V Input	RCA Composite & Stereo Audio, side panel
Color Skins	Beige, Grey, & Black Included
Size/Footprint	13"w x 11"d x 2.5"h

Overhead Entertainment

VCM-143DMH
Ceiling Mount DVD Entertainment System w/ MobileLink Smartphone Mirroring & High Resolution 14.3" LCD
(requires HDM-A3 MobileLink Interface Cable, sold separate)



MobileLink Mirrors the Image of Your Smartphone Or Tablet To The Ceiling Monitor via HDM-A3 Interface Cable (sold separate). Powered by MHL.

VCM-143DMH	
LCD Size/Type	14.3" 1,366 x 768, 16:9 Aspect Ratio
Disc Playback	1,080P MP4 & AVI
USB/SD Playback	1,080P MP4 & AVI
FM Transmitter	8 Channel
IR Transmitter	Single Channel 2.3MHz
Audio Outputs	Stereo Audio RCA, 2V, top panel
Video Output	RCA Composite, 500mV, top panel
A/V Input	RCA Composite & Stereo Audio, top panel
Color Skins	Beige, Grey, & Black Included
Dome Light	Bright White LED, Trigger or Manual
Size/Footprint	16"w x 7.5"d x 2"h



Beige, Grey, & Black Colors INCLUDED!!!



VCM-11DXX
Ceiling Mount DVD Entertainment System w/ Swiveling 11" LCD

VCM-11DXX	
LCD Size/Type	11" 800 x 480, 16:9 Aspect Ratio
Disc Playback	1,080P MP4 & AVI
USB/SD Playback	1,080P MP4 & AVI
FM Transmitter	8 Channel
IR Transmitter	Single Channel 2.3MHz
Audio Outputs	Stereo Audio RCA, 2V, top panel
Video Output	RCA Composite, 500mV, rear panel
A/V Input	RCA Composite & Stereo Audio, top panel
Color Skins	Beige, Grey, & Black Included
Dome Light	Bright White LED, Trigger or Manual
Size/Footprint	14"w x 12.5"d x 2.5"h



Rear Seat Entertainment

- VHD-99BK - black
- VHD-99GR - grey
- VHD-99BG - beige
- Universal Replacement Headrest w/ DVD Player, & 9" LCD Touch Screen



TOUCH
SCREEN



2ch. Wireless IR
Headphone INCLUDED!!!

VHD-90CC	
LCD Size/Type	9" 800x480 16:9, Swivel
Disc Playback	720P MP4 & AVI
USB Playback	720P MP4 & AVI, 32GB
FM Transmitter	330 Channel
IR Transmitter	Dual Channel, 2.3/3.8MHz
Audio Outputs	Stereo Audio RCA, 2V, top panel
Video Output	RCA Composite, 500mV
A/V Input	RCA Composite & Stereo Audio
Pole Dia./Width	3/8" Diameter, 1/2" & 9/16" Adapters, 3.75" - 8.25" Width
Size (W x H x D)	10.5" x 8" x 5.5"

DVD

USB

IR Transmitter

A/V INPUT

SD

FM Transmitter

Rear Seat Entertainment

- 9" LCD Screen - VH-90CC
- 7" LCD Screen - VH-70CC
- DVD Player + 9" LCD Screen - VHD-90CC
- DVD Player + 7" LCD Screen - VHD-70CC
- Universal Replacement Headrest w/ DVD Player & LCD Screen



Beige, Grey, & Black Colors INCLUDED!!!

DVD

USB

IR Transmitter

A/V INPUT

SD

FM Transmitter

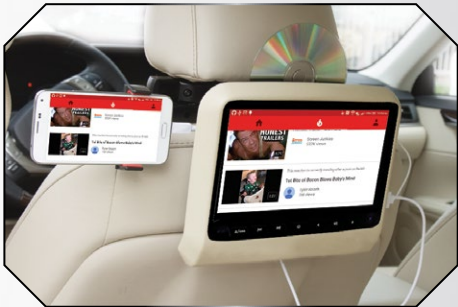
	VHD-90CC	VHD-70CC	VH-90CC	VH-70CC
DVD	Yes	-	-	-
USB/SD	Yes	-	-	-
Standard Features & Specifications				
LCD Size/Type	9" 800x480 16:9	7" 800x480 16:9	9" 800x480 16:9	7" 800x480 16:9
Disc Playback	720P MP4 & AVI	-	-	-
USB Playback	720P MP4 & AVI, 32GB	-	-	-
FM Transmitter	330 Channel	-	-	-
IR Transmitter	Dual Channel, 2.3/3.8MHz	-	-	-
Audio Outputs	Stereo Audio RCA, 2V, top panel	-	-	-
Video Output	RCA Composite, 500mV	-	-	-
A/V Input	RCA Composite & Stereo Audio			
Color Skins	Beige, Grey, & Black Included			
Pole Dia./Width	3/8" Diameter, 1/2" & 9/16" Adapters, 4.75" - 8.25" Width			
Size (W x H x D)	11.5" x 8.5" x 6"	10" x 7" x 5.5"	11.5" x 8.5" x 6"	10" x 7" x 5.5"

Rear Seat Entertainment

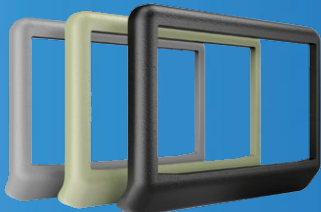
SHAD-9H

Universal Headrest Bracket Mount DVD Player w/9" LCD & MobileLink Smartphone Mirroring*

*requires HDM-A3 MobileLink Interface Cable



MobileLink Mirrors the Image of Your Smartphone Or Tablet To The Ceiling Monitor via HDM-A3 Interface Cable (sold separate). Powered by MHL.



Beige, Grey, & Black Colors INCLUDED!!!

SHAD-9H	
LCD Size/Type	9" 800x480 16:9, Swivel
Disc Playback	720P MP4 & AVI
USB Playback	720P MP4 & AVI, 32GB
FM Transmitter	330 Channel
IR Transmitter	Dual Channel, 2.3/3.8MHz
Audio Outputs	Stereo Audio RCA, 2V, top panel
Video Output	RCA Composite, 500mV
A/V Input	RCA Composite & Stereo Audio
Pole Dia./Width	3/8" Diameter, 1/2" & 9/16" Adapters, 3.75" - 8.25" Width
Size (W x H x D)	10.5" x 8" x 5.5"



VHR-72IRA

7" Custom Install Headrest Monitor

Two Auxiliary A/V Input
Dual Channel IR Transmitter (use VHP-12)
Wired Headphone Output
Low Refection TFT-LCD Monitor
Ultra Bright LED Backlighting
Selectable Aspect Modes
Preset/Manual Image Control

Dimmer Control
Remote Control Included
NTSC/PAL Selection
480 x 234 (16:9) Image Resolution
Cutout Dimensions:
7" w x 4.75" h x .75" d



IR Wireless Headphones

VHP-11

Single 1ch. IR Wireless Headphone

Adjustable Headphone Straps
Channel Selectable From Each Headphone
Ear Pads Fold Flat for Seat Pocket Storage
EVA hard Carry Case Included
MP-3 Player Input Via 3.5mm Jack

On/Off Switch Saves Battery Life
Auto Power Off Function
Auto Mute Function
Variable Volume Control
ALC Auto Level Control



VHP-12

Single 2ch. IR Wireless Headphone

Adjustable Headphone Straps
Channel Selectable From Each Headphone
Ear Pads Fold Flat for Seat Pocket Storage
EVA hard Carry Case Included
MP-3 Player Input Via 3.5mm Jack

On/Off Switch Saves Battery Life
Auto Power Off Function
Auto Mute Function
Variable Volume Control
ALC Auto Level Control



VHP-22

Pair 1ch. IR Wireless Headphones w/ Transmitter

Stereo Audio IR Transmitter
Adjustable Headphone Straps
Ear Pads Fold Flat for Seat Pocket Storage
EVA hard Carry Case Included
MP-3 Player Input Via 3.5mm Jack

On/Off Switch Saves Battery Life
Auto Power Off Function
Auto Mute Function
Variable Volume Control
ALC Auto Level Control



VHP-900

Single 2ch. 900MHz RF Wireless Headphone

Channel Selectable From Each Headphone
100ft. Operational Distance
Adjustable Headphone Straps
Ear Pads Fold Flat for Seat Pocket Storage
EVA hard Carry Case Included
MP-3 Player Input Via 3.5mm Jack

On/Off Switch Saves Battery Life
Auto Power Off Function
Auto Mute Function
Variable Volume Control
ALC Auto Level Control



VHP-9002

Pair 2ch. 900MHz RF Wireless Headphones w/ Transmitter

Dual Stereo Audio Inputs
Channel Selectable From Each Headphone
100ft. Operational Distance
Adjustable Headphone Straps
Ear Pads Fold Flat for Seat Pocket Storage
EVA hard Carry Case Included

MP-3 Player Input Via 3.5mm Jack
On/Off Switch Saves Battery Life
Auto Power Off Function
Auto Mute Function
Variable Volume Control
ALC Auto Level Control



Tarantula AMPLIFIERS Nano

NEW FOR
2017

We're in a time where small is "in". Smaller, more economical vehicles are more and more desirable. But that doesn't mean you have to sacrifice big power for your system. The new Tarantula NANO amplifiers pack huge amounts of power into small chassis thanks to efficient Full-Range Class D topology and SMT technology. Complimented with every possible preamp adjustment, the NANO amplifiers leave nothing to be desired...



Class D Full Range SMT Circuitry
Double Sided Composite Epoxy PCB
2-Ohm Stereo, 4-Ohm Bridged Multi-Channel
1-Ohm Stable Class D Monoblock
Three-Way Protection Circuitry
Delayed On/Off Circuit
Variable 12dB High, Low, & Subsonic Crossovers
Variable 18dB 50Hz Bass Boost (1ch.)
Dash Mounted Remote Gain Control (1 ch.)
4g Power Terminals & 12g Speaker Terminals

TARANTULA NANO	TN4.1200D	TN1.2000D	TN1.3000D
Max Power	1,200w	2,000w	3,000w
RMS Power 4Ω	100 x 4	450 x 1	650 x 1
RMS Power 2Ω	150 x 4	800 x 1	1,000 x 1
RMS Power 4Ω Bridged	300 x 2	1,000 x 1 (1Ω)	1,500 x 1 (1Ω)
Remote Gain Control	-	Included	Included
Dimensions (7.25"w x 2.25"h)	11.75"	12.75"	15.75"



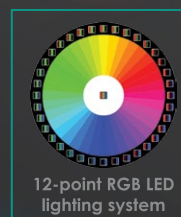
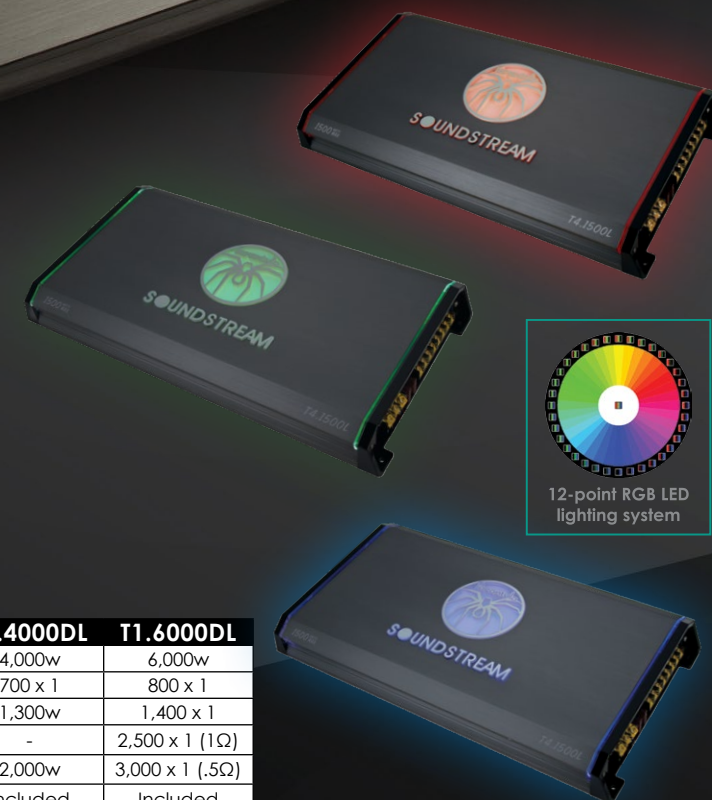
Tarantula Electro

Tarantula amplifiers continue to dominate the Soundstream amplifier arsenal. For the newest generation, we've maintained their stable performance, but given them a unique appearance. Each Tarantula Electro amplifier features a 12-point RGB LED lighting system, containing its own independent RGB control. A simple press of the end panel mounted switch changes the color to one of several presets, slow-motion color change, or rapid flashing random color. For more custom installs, a single color can be selected during slow-motion color change. Tarantula Electro models include 4ch, 1-ohm stable class D 5ch & monoblocks, and an additional .5-ohm stable 3,000w monoblock.



2-ohm Stereo & 4-ohm Bridged Full Range Operation
1-ohm Minimum Impedance Monoblock Operation
Bridge 2 Monoblocks Together for Double Power!
Multi-color RGB LED Illumination Accent Lighting
Solid Color, Flashing, Random, or Slow-Motion Color Change
MOSFET Power Supply w/ Audiophile Grade IR™ Transistors
Military Grade SMT PCB Maintains Dynamic Performance
Direct Short, Thermal, & Overload Circuits Protect Amplifier
200mV-6V High Level or Low Level RCA Input & Output
Variable 12dB High Pass, Low Pass, & Subsonic Crossovers
12dB Bass Boost Increases Low Octave Harmonics (monoblock)
180° Phase Shift Improves Low Octave Dynamics (monoblock)
Dash Mount Gain Control Module Included (select models)

TARANTULA ELECTRO	T4.1500L	T5.2500DL	T1.4000DL	T1.6000DL
Max Power	1,500w	2,500w	4,000w	6,000w
RMS Power 4Ω	120 x 4	75 x 4 + 325 x 1	700 x 1	800 x 1
RMS Power 2Ω	180 x 4	125 x 4 + 500 x 1	1,300w	1,400 x 1
RMS Power 4Ω Bridged	360 x 2	250 x 2 + 750 x 1 (1Ω)	-	2,500 x 1 (1Ω)
RMS Power 1Ω Bridged	-	-	2,000w	3,000 x 1 (.5Ω)
Remote Gain Control	-	-	Included	Included
Dimensions (9"w x 2.50"H)	16.00"	17.25"	18.00"	20.50"



Rubicon NANO AMPLIFIERS

For 2016, Rubicon amplifiers are all new. Rubicon Nano amplifiers adopt the optimum class D performance, reliability, and footprint of the Picasso Nano platform. At first glance, you'll notice several key improvements. Rubicon Nano's signal inputs, power/ground, and speaker connections are all re-located to the leading edge of the chassis, for an easier, more appealing install. All pre-amp & crossover options are conveniently located on the top surface, making adjustment after installation possible. What you might not notice are additions to the circuit board, including increased power supply & output stage components, & monoblock bridging capability. Available Rubicon Nano models include a 4ch, 5ch, & class D monoblocks up to 2,500 watts.



- High Efficiency Class D Full Range & Monoblock Amplifiers

Hybrid Aluminum Alloy Heatsink for Optimum Dissipation

2-ohm Stereo & 4-ohm Bridged Class D Full Range

1-ohm Minimum Impedance Monoblock Operation

Monoblock Bridging Capability for Double Amplifier Application

MOSFET Power Supply w/ Audiophile Grade IR™ Transistors

Military Grade SMT PCB Maintains Dynamic Performance

Direct Short, Thermal, & Overload Circuits Protect Amplifier
- 200mV-6V Low Level RCA or High Level Signal Input

Quick Disconnect High Level Wire Harness Included

Easy DIY Install Single Sided Terminals & Controls

4g Power Input Terminals & 12g Speaker Output Terminals

Variable 12dB High Pass, Low Pass, & Subsonic Crossovers

12dB Bass Boost Increases Low Octave Harmonics

Dash Mount Gain Control Module Included (monoblocks)

Rubicon Nano	RN4.1400D	RN5.2000D	RN1.2000D	RN1.3000D	RN1.5000D
Max Power	1,400w	2,000w	2,000w	3,000w	5,000w
RMS Power 4Ω	125 x 4	75 x 4 + 300 x 1	400 x 1	600 x 1	1,000 x 1
RMS Power 2Ω	175 x 4	125 x 4 + 500 x 1	600 x 1	900 x 1	1,500 x 1
RMS Power 4Ω Bridged	350 x 2	250 x 2 + 500 x 1 (2Ω)	1,000 x 1 (1Ω)	1,500 x 1 (1Ω)	2,500 x 1 (1Ω)
Remote Gain Control	-	Included	Included	Included	Included
Dimensions: (6.50" w x 1.50"h)	9.00"	11.75"	9.00"	10.25"	13.75"

STEALTH AMPLIFIERS

Don't let these little monsters fool you. The latest and greatest of class D full range technology allows us to pack 10 lbs of KICK YOUR ASS in a 2 lbs chassis. Once regarded as "dirty power", class Ds stable performance, thanks to high power capability, maximum efficiencies, and low tolerance components, rivals traditional full range applications. Minimal power requirements, ultra micro footprint, unbelievable sound quality, and easy install make Stealth amplifiers great for any car, motorcycle, boat, or off-road vehicle...

Stealth series amplifiers include a 500w 4ch model with built-in Bluetooth 4.0. Seamlessly connect your cell phone or other enabled smart device for continuous audio playback at your fingertips. A great addition to off-road vehicles, motorcycles, or personal watercraft missing a source unit.

New in 2017, the Stealth family welcomes a 500w 2-channel, 500w 3-channel, 600w 4-channel, and a 500w mono-block!!!

NEW FOR
2017

95%+ Efficient
Class D Full Range
Only 3" x 1.5"!!!
Install-Me-Anywhere
Micro Footprint



- High Efficiency Class D Full Range & Monoblock Amplifiers
- Hybrid Aluminum Alloy Heatsink for Optimum Dissipation
- 2-ohm Stereo & 4-ohm Bridged Full Range Operation
- 2-ohm Minimum Impedance Monoblock Operation
- Built-in Bluetooth V4.0 for Wireless Mobile Device Playback*
- MOSFET Power Supply w/ Audiophile Grade IR™ Transistors
- Military Grade SMT PCB Maintains Dynamic Performance
- Direct Short, Thermal, & Overload Circuits Protect Amplifier
- 200mV-12V High Level or Low Level RCA Input
- Quick Disconnect RCA/High Level Wire Harness
- Quick Disconnect Power and Speaker Output Harness
- Variable 12dB High Pass, Low Pass, & Subsonic Crossovers
- 12dB Bass Boost Increases Low Octave Harmonics (ST1)
- Dash Mount Gain Control Module Included (ST1)

Stealth Amplifiers	ST2.1000D	ST3.1000D	ST4.1000D	ST4.1000DB	ST4.1200D	ST1.700D	ST1.1000D
MAX Power	1,000w	1,000w	1,000w	1,000w	1,200w	700w	1,000w
RMS Power 4Ω	140 x 2	65 x 2 + 1 x 200	90 x 4	90 x 4	100 x 4	250 x 1	350 x 1
RMS Power 2Ω	250 x 2	100 x 2 + 1 x 300	125 x 4	125 x 4	150 x 4	350 x 1	500 x 1
RMS Power 4Ω Bridged	500 x 1	200 x 1 + 1 x 300	250 x 2	250 x 2	300 x 2	-	-
Remote Gain Control	Included	Included	-	-	-	Included	Included
Dimensions (3"w x 1.5"h)	6.50"	7.75"	6.50"	7.75"	7.75"	6.50"	7.75"

Picasso Nano

AMPLIFIERS

Cars come in all different shapes, most in the same size; compact. So, we've engineered these mini Picassos to fit in virtually any location in your ride. Other sport compact amplifiers use bizarre technologies with pseudo power supplies. Picasso Nanos use tried and tested MOSFET power supplies & tenacious Class D circuitry.



Small Compact 4.75" Wide Chassis
4-ohm Bridged/2-ohm Stereo Class D Full Range
2-ohm Stable Class D Monoblocks
1-Ohm Stable Class D Monoblock Available
MOSFET PWM Power Supply
80Hz 12dB HP or LP Crossover (2/4 ch.)
50-250Hz Variable 12dB LP Crossover (mono)
10-50Hz Variable 12dB Subsonic Crossover (mono)
12dB 45Hz Bass Boost (mono)
200mv-6V Low Level Input Sensitivity
High Level Input
Dash Mount Remote Gain Control

PICASSO NANO	PN2.350D	PN4.520D	PN4.1000D	PN5.640D	PN1.650D	PN1.1000D
MAX Power	700w	1,040w	2,000w	1,280w	1,300w	2,000w
RMS Power 4Ω	115 x 2	100 x 4	140 x 4	60 x 4 + 200 x 1	400 x 1	350 x 1
RMS Power 2Ω	175 x 2	130 x 4	250 x 4	80 x 4 + 350 x 1	650 x 1	600 x 1
RMS Power 4Ω Bridged	350 x 1	260 x 2	500 x 2	160 x 2 + 350 x 1	-	1,000 x 1 (1Ω)
Remote Gain Control	-	-	-	Included	Included	Included
Dimensions (4.75"w x 1.5"h)	5.50"	9.25"	10.25"	10.25"	9.25"	10.25"



Picasso

AMPLIFIERS

Picasso amplifiers are the next step in performance and value. Taking advantage of our tried and true class A/B full range and improved efficiency class d monoblock platforms, Picasso amplifiers continue down the road of reliability and longevity you know well.



Class A/B Full Range & Class D Monoblock Amplifier
2-ohm Stereo & 4-ohm Bridged Full Range Operation
1-ohm Stable Class D Monoblock Operation
Strap 2 Like-Monoblocks Together for Double Power!
Military Grade PCB w/ PWM MOSFET Power Supply
Direct Short, Thermal, & Overload Circuits Protect Amplifier
High Level Input w/ Signal Sense Auto Turn-on
200mV-6V Low Level RCA Audio Inputs

Variable 12dB High Pass, Low Pass, & Subsonic Crossovers
12dB Bass Boost Increases Low Octave Harmonics (select models)
1800 Phase Shift Improves Low Frequency Dynamics (select models)
Dash Mount Gain Control Module Included (select models)
4g Power/Ground Terminals, 8g Speaker Terminals
0G Power/Ground Terminals (select models)

PICASSO AMPLIFIERS	PA4.700	PA4.1000	PA5.1600	PA1.3500D	PA1.5000D	PA1.6000D
MAX Power	700w	1,000w	1,600w	3,500w	5,000w	6,000w
RMS Power 4Ω	45 x 4	70 x 4	70 x 4 + 180 x 1	750 x 1	1,100 x 1	1,400 x 1
RMS Power 2Ω	85 x 2	125 x 4	125 x 4 + 300 x 1	1,100 x 1	1,750 x 1	2,000 x 1
RMS Power 4Ω Bridged	175 x 2	250 x 2	250 x 2 + 300 x 1	1,750 x 1 (1Ω)	2,500 x 1 (1Ω)	3,000 x 1 (1Ω)
Remote Gain Control	-	-	Included	Included	Included	Included
Dimensions (7.75"w x 2.25"h)	11.75"	12.75"	17.75"	16"	21.25"	23.25"

ARACHNID

AMPLIFIERS

NEW FOR
2017



ARACHNID AMPLIFIERS	AR4.1200	AR4.1800	AR1.2500D	AR1.4500D	AR1.8000D
MAX Power	1,200w	1,800w	2,500w	4,500w	8,000w
RMS Power 4Ω	120 x 4	180 x 4	500 x 1	900 x 1	1,500 x 1
RMS Power 2Ω	150 x 2	225 x 4	850 x 1	1,500 x 1	2,500 x 1
RMS Power 4Ω Bridged	300 x 2	450 x 2	1,250 x 1 (1Ω)	2,200 x 1 (1Ω)	4,000 x 1 (1Ω)
Remote Gain Control	-	-	Included	Included	Included
Dimensions (8.50" w x 2" h)	13.50"	15.75"	12.75"	13.75"	18.50"

Amplifier Installation

Complete D.I.Y. Installation Kits

WKIT-0
0AWG Installation Kit
w/ 200A ANL Fuse

WKIT-4
4AWG Installation Kit
w/ 120A MANL Fuse

WKIT-8
8AWG Installation Kit
w/ 80A MANL Fuse

All Installation Kits Include:

17ft Power Wire
3ft Ground Wire
25ft Speaker Wire
17ft Twisted Pair RCA Interconnect
17ft Remote Turn-on Wire
MANL or ANL Fuse Holder w/ Fuse
Complete Installation Accessories



Power Stiffening Capacitors

SCX-1.5
1.5 Farad Power Capacitor

12-16 DC Input Voltage
Red LED Voltage Meter
Bolt Post for Ring Terminal

SCX-4
4 Farad Power Capacitor

12-16 DC Input Voltage
Blue LED Voltage Display
Chrome Plated Chassis
Bolt Post for Ring Terminal



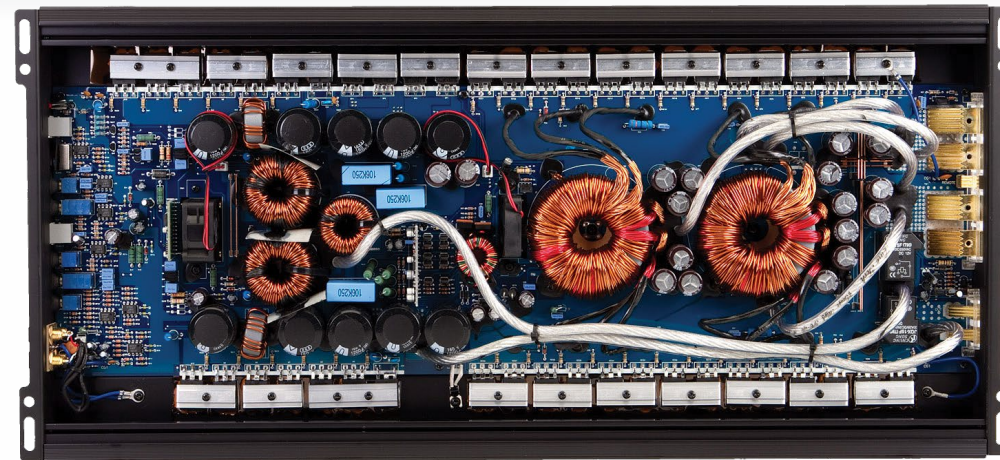
USB-8A
8" Pre-loaded Under Seat Enclosure w/ Amplifier

150w Amplifier Built-in
200mV-3V Input Sensitivity
Variable 12dB 50-150Hz LP Crossover
Variable 12dB 45Hz Bass Boost
180° Phase Switch
>95dB Signal-to-Noise Ratio
0.05% Total Harmonic Distortion
Remote Gain Control Included
Dimensions: 3"h x 9.5"w x 14.5L



AMPLIFIERS

Got an oscilloscope? Probably not... How about an ammeter? Doubtful too... But everybody has or can easily get an adequate Digital Volt Meter for \$20 or so. Many people think they have power from their amps equal to the rating. Very rarely! Seasoned competitors know how to tune their system with a DVM. But they do not measure Wattage, but rather AC Voltage. The new X3 amps are based off of voltage for tuning convenience. The included chart will tell you exactly how much power you can get from the amplifiers at 12V, 14.4V and 16V, and at 1, 2, and 4 ohms, and even at 1%, 5% and 10% THD! If you are not getting what the chart says you should, you know for a fact that you do not have sufficient power supply in the form of batteries. Or maybe you have a lot higher impedance or enclosure impedance rise than you suspected. Either way, you will know how much power you are getting out of your X3 amplifier and can take the step needed to use the X3 amps to their winning potential. It is that simple...



X3 AMPLIFIERS	X3.2K4	X3.71	X3.14K
RMS Power 4Ω, 14.4V, 1% THD	250 x 4	1,750 x 1	-
RMS Power 2Ω, 14.4V, 1% THD	400 x 4	3,240 x 1	7,600
RMS Power 1Ω, 14.4V, 1% THD	600 x 4	4,450 x 1	10,940
RMS Power 4Ω, 16V, 10% THD	-	2,010 x 1	-
RMS Power 2Ω, 16V, 10% THD	-	3,780 x 1	8,350
RMS Power 1Ω, 16V, 10% THD	-	5,180 x 1	14,300
Remote Gain Control	Included	Included	Included
Dimensions (11.5" w x 2.5" h)	15.75"	23.75"	36.25"

1-Ohm Stable Class D Competition Amplifiers
Non-regulated MOSFET Power Supply
Up to 16V Power & 10V Audio Input
0ga Input & 8ga Output Terminals
4ch. Bridgeable w/ 2-Ohm, 1-Ohm Stereo
Monoblocks Strapable w/ 2Ω Load
12dB High/Low Pass Crossovers (4ch)
18dB Low-Pass & Subsonic Crossovers (mono)
Variable 18dB 45Hz Bass Boost
180° Phase Control (mono)
Remote Gain Control (mono)

Tarantula SUBWOOFERS

In recent years, Tarantula subwoofers have evolved to meet various performance and placement goals, keeping your, the Soundstream fanatic, suggestions in mind. However, more often than not, we hear your calls to bring back a legend. For 2015, we're proud to re-introduce the old favorite, Tarantula T5. For this next generation, we made a few changes and several improvements.

Improvements include direct connect wire leads, over saturated 12mm top plate and t-yoke, & double-stitched cone to high density poly-ether foam surround for improved sound quality. Key components that you expect from T5 still remain; big ass 1,000w 3" voice coil, tripple-stack magnet structure, high density Spruce pulp sub-cone, and the iconic black-on-black Soundstream spider.



Overcompensating Motor Structure for Increased Magnetic Strength
12mm T-Yoke & Top Plate Improve Low Frequency Dynamics
Vented T-Yoke & Frame Reduces Voice Coil Heat Build-up
Non-Magnetic Non-Resonate Die-Cast Aluminum Frame
3" 4-Layer Voice Coil w/ Direct Connect Wire Increases Power Handling
High-Temperature Tolerance Adhesives Resist Thermal Failure
Non-Transfer Spruce Pulp Cone w/ UV & Chemical Protection
Stitched and Glued Surround/Cone Joints for Strongest Bonding
Extended Excursion Poly-ether Foam Surround w/ UV & Chemical Protection
Dual Poly-Cotton Suspension Dampen Violent Accelerations
1-pc Gasket/Trim Ring w/ Concealed Mounting Holes Included



Re-cone Kit
Available

TARANTULA T5	T5.102	T5.104	T5.122	T5.124	T5.152	T5.154
MAX Power (watts)	1,800w	2,000w	2,000w	2,600w		
RMS Power (watts)	900w	1,000w	1,000w	1,300w		
Efficiency (1w/1m dB)	83.5dB	86dB	86dB	88dB		
Voice Coil Configuration	3" DVC 2Ω	3" DVC 4Ω	3" DVC 2Ω	3" DVC 4Ω	3" DVC 2Ω	3" DVC 4Ω
Mounting Depth	6.25"	7.25"	7.25"	9.25"		
Optimum Sealed Box	0.75ft³	1.50ft³	1.50ft³	2.00ft³		
Optimum Ported Box	1.25ft³	2.50ft³	2.50ft³	4.00ft³		

NEW FOR
2017

REFERENCE

NEW FOR
2017

SUBWOOFERS

In today's world, where styling and sex appeal often guide your buying decisions, performance is often compromised or even lost in favor of cosmetic treatment. At Soundstream, you, our customers expect more for your hard earned dollars. Not only do you want products with outstanding cosmetic styling, you EXPECT performance.

The highest performance that you have come to know and love from products bearing the Soundstream brand. You expect our products to be the pinnacle, the reference, which raises the bar and sets a new standard of outstanding performance coupled with edgy, aggressive cosmetic design. Why just settle for pretty face or an ugly sister. Soundstream Reference series subwoofers answer the call.



Third Generation Soundstream Reference Frame
Oversaturated Motor Sturcture for Increased Magnetic Strength
12mm Vented T-Yoke & Top Plate Improve Low Frequency Dynamics
317oz Double Stack Magnet, T-Yoke & Top Plate
2.5" 4-Layer Voice Coil w/ Large Gauge Wire Increases Power Handling
High-Temperature Tolerance Adhesives Resist Thermal Failure
Inverted Roll Polyether Foam Surround w/ UV & Chemical Protection
Oversized Concave IMPP Primary Cone Increases Effective Surface Area

Non-Transfer Spruce Pulp Cone w/ UV & Chemical Protection
Acoustic Canceling Polyvinyl Chloride Gasket & Trim Ring
Nickel Plated 12ga Spring-Loaed Compression Wire Terminals
Stitched Voice Coil Leads Prevent Potential Damage
Dual Poly-Cotton Suspension Dampen Violent Accelerations

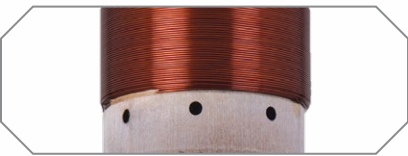
PATENT PENDING



REFERENCE R1	R.122	R.124
MAX Power (watts)	2,000w	
RMS Power (watts)	1,000w	
Efficiency (1w/1m)	85.00dB	
Voice Coil Configuration	2.50" DVC 2Ω	2.50" DVC 4Ω
Mounting Depth	7.00"	
Optimum Sealed ft³	1.00ft³	
Optimum Ported ft³	2.00ft³	

REFERENCE

SUBWOOFERS



Woven Fiberglass Composite Cone

All Reference R3 woofers use fiberglass stranding woven together for ultimate strength and less elasticity. A heavy soaking in epoxy combined with the sonic qualities of pulp paper backing proves itself worthy of any system.

Extended Excursion Polyurethane Surround

Polyurethane is a foam compound used in the manufacture of countless gasket and insulation products, known for its adhesive bonding properties. Reference R3 woofers utilize an extended excursion polyurethane surround for it's strength and flexible properties during extreme movement.

100% OFC 4-Layer Voice Coil

R3 woofers use generous 1.50" long, 2.5" diameter 100% OFC Copper voice coils. A vented Aluminum former extracts and dissipates any heat build-up, resulting in improved power handling.

Back Plate & T-Yoke Venting

Heat build-up is a leading cause of catastrophic woofer failure. Venting built into the T-Yoke, back plate, and voice coil extract and dissipate heat, ensuring R3 woofers keep their cool.

REFERENCE R3	R3.8	R3.10	R3.12	R3.15
MAX Power (watts)	1,000w	1,400w	1,600w	1,800w
RMS Power (watts)	500w	700w	800w	900w
Efficiency (1w/1m)	80.70dB	82.10dB	84.66dB	90.20dB
Voice Coil Configuration	2.00" DVC 2Ω	2.5" DVC 2Ω	2.5" DVC 2Ω	2.5" DVC 2Ω
Mounting Depth	5.25"	6.00"	6.875"	7.625"
Optimum Sealed ft³	0.75ft³	1.00ft³	1.50ft³	2.00ft³
Optimum Ported ft³	1.25ft³	1.50ft³	2.25ft³	2.75ft³

STEALTH-12

SUBWOOFERS

An addition to the Stealth family, this shallow mount 12" subwoofer yields the performance of most conventional 12" subwoofers, but needs only 3" for mounting. Consider Stealth-12 optimum for pre-fab under seat and behind rear seat shallow enclosures.



Aerated Paper Cone for Dynamic, Natural Sound Quality
Semi-Circular Frame Venting Maintains Thermal Control
Internal Motor Assembly Reduces Mounting Depth
3" Mounting Depth to Install in Any Vehicle Type
2" 4-ohm DVC for Multiple Woofer Application

STEALTH-124	
MAX Power (watts)	700w
RMS Power (watts)	350w
Efficiency (1w/1m dB)	86dB
Voice Coil Configuration	2" DVC 4Ω
Mounting Depth	3"
Optimum Sealed Box	1.00ft³
Optimum Ported Box	2.00ft³

STEALTH-13

Simply put, this woofer is the shallowest woofer on the market. It is a full 13.25" subwoofer that can play not only in a tiny .5 cubic foot enclosure, but without losing low bass extension. Perfect for applications in doors, under seats, foot wells, & trucks.

Low Bass In No Space!

Proprietary Cast Aluminum Basket
Inverted Motor Assembly
Solid Aluminum Cone
2" Mounting Depth
5" Voice Coil
Semi-Circular Frame Venting

STEALTH-13	
MAX Power (watts)	400
RMS Power (watts)	200
Efficiency (1w/1m dB)	80.82
Voice Coil Configuration	5" SVC 4Ω
Mounting Depth	2"
Optimum Sealed Box	0.75
Optimum Ported Box	-



Picasso

SHALLOW SUBWOOFERS

A new addition for 2017, Picasso shallow subwoofers combine performance and value. These shallow subwoofers perform best in small sealed enclosures, with minimal power requirements, thanks to efficiencies in cone and suspension design.

NEW FOR
2017



PICASSO SUBWOOFERS	PSW.104	PSW.12
MAX Power (watts)	500w	600w
RMS Power (watts)	250w	300w
Efficiency (1w/1m)	86.40dB	88.41dB
Voice Coil Configuration	2" SVC 4Ω	
Mounting Depth	3.00"	3.50"
Optimum Sealed ft³	0.75ft³	1.00ft³
Optimum Ported ft³	-	

PSB.10A

Powered Enclosure w/ PSW-10
15h x 21.75l x 5"/7" (d1/d2)

PSB-12A

Powered Enclosure w/ PSW-12
15.25"h x 24"l x 5.25"/7.25" (d1/d2)

NEW FOR
2017

Complimenting the Picasso shallow family, these powered enclosures take away all the hard work of amplifier and sub box installation. The available 10" and 12" models include a 300w amplifier built-in, with crossovers and bass boost for optimum tuning.



REFERENCE Components

When it comes to making a component speaker worth listening too, you have to think outside of the box. That's what we do at Soundstream, and that is exactly what we did for 2014. The RC.6 uses non-traditional driver material to be innovative but also sound amazing. Everyone knows paper sounds better, but we use an aerated paper cone for a lighter, stronger cone resulting in a very natural sound. The tweeter in this set uses a PST (puffed silk tweeter) this results in the strongest and lightest silk tweeter on the market without adding any weight, thus being more efficient.



TWEETER:
2.00" Machined Aluminum Housing
PST (Puffed Silk Tweeter Technology)
0.5" Mounting Depth

WOOFER:
6.5" Mid-woofer
APC (Aerated Paper Cone Technology)
Cast Aluminum Frame
Nickel Plated Spring Terminals
2.5" Mounting Depth

RC.6	
Size & Type	6.5" 2-way
MAX Power (watts)	400
RMS Power (watts)	200
System Efficiency	93db
Top Mount Depth	2.34"



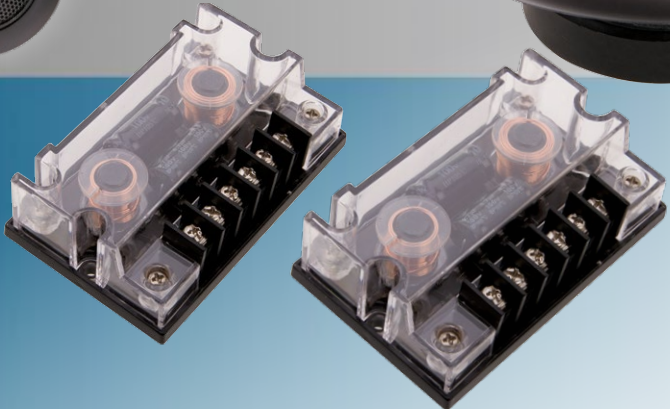
Painstakingly engineered, the RC.6 crossover features the highest quality components to create the purest signal path possible for seamless, phase coherent blending of the speaker component so you can enjoy the purest audio reproduction possible in an automotive application.

Picasso Components

Improved Efficiency Diaphragm & Magnet Structure
Carbon Fiber Injection Molded Polypropylene Cone
Treated Woven Cloth Surround
Phase Plug Improved Dynamic Response
1" Voice Coil on Aluminum Former
4-ohm System Impedance
Quick Disconnect Terminals
1" Pivoting Soft Dome Tweeter
Flush or Surface Mounting
Passive Crossover Included
Freq-Response: 70-20kHz



PF.6	
Size & Type	6.5" 2-way
MAX Power (watts)	350
RMS Power (watts)	120
System Efficiency	93dB
Top Mount Depth	2.5"



ARACHNID Components

Improved Efficiency Diaphragm & Magnet Structure
Injection Molded Polypropylene Cone
Treated Woven Cloth Surround
Phase Plug Improved Dynamic Response
1" Voice Coil on Aluminum Former
4-ohm System Impedance
Quick Disconnect Terminals
1" Pivoting Balanced Dome Tweeter
Flush or Surface Mounting
Passive Crossover Included
Freq-Response: 70-20kHz

AC.6	
Size & Type	6.5" 2-way
MAX Power (watts)	300
RMS Power (watts)	100
System Efficiency	92dB
Top Mount Depth	2.50"



TARANTULA Full Range

Following the high fidelity qualities of the Reference RC-6 component set, we're proud to introduce the newest generation of SST coaxial speakers. Adopting similar materials and technology, these direct replacement speakers yield sonic qualities you'd expect only from Soundstream Reference series.

Painstakingly engineered, SST speakers feature our aerated paper cone material and puffed silk dome tweeter, creating the most dynamic sound quality possible. Seamless, phase coherent blending of the cone and tweeter give your music texture, presence and the airiness of a live performance. It's these harmonics that pull emotion and all your senses back to the listening experience.



Aerated Paper Cone w/ Cone Stiffening Ribs
Acoustic Guide Tweeter w/ Phase Alignment
Phase Optimized 1" Puffed Silk Dome Tweeter
1" Aluminum Voice Coil
Quick Disconnect Terminals
Snap-In Grills Included

SST SPEAKERS	SST.652	SST.692
Size and Configuration	6.5" 2-way	6" x 9" 2-way
MAX Power (watts)	260w	360w
RMS Power (watts)	130w	180w
Efficiency (1w/1m dB)	88.5dB	90.9dB
Top Mount Depth	2.25"	3.00"



SST.652



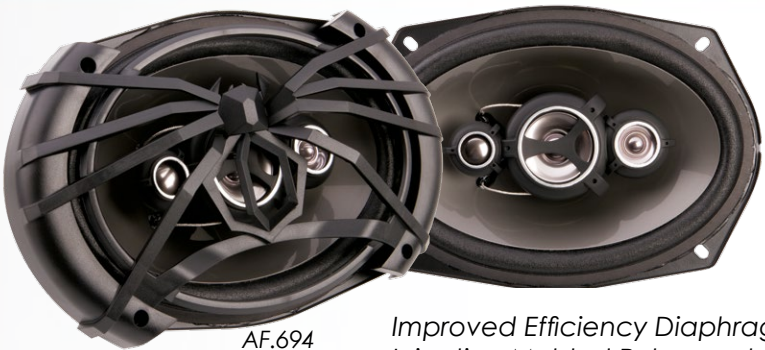
PF.653

PF.693

Improved Efficiency Diaphragm & Magnet Structure
Carbon Fiber Injection Molded Polypropylene Cone
Treated NBR Rubber Surround
1" Voice Coil on Aluminum Former
4-ohm System Impedance
Quick Disconnect Terminals
2" Balanced Dome Mylar Midrange (693)
1" Balanced Dome Mylar Tweeter

PICASSO SPEAKERS	PF.693	PF.653
Size and Configuration	6"x9" 3-way	6.5" 3-way
MAX Power (watts)	350w	250w
RMS Power (watts)	130w	90w
Efficiency (1w/1m dB)	94dB	93dB
Top Mount Depth	3.25"	2.25"

ARACHNID Full Range



AF.694



AF.653

AF.573



AF.52

AF.42

Improved Efficiency Diaphragm & Magnet Structure
Injection Molded Polypropylene Cone
Treated Woven Cloth Surround
1" Voice Coil on Aluminum Former
4-ohm System Impedance
Quick Disconnect Terminals
2" Balanced Dome Mylar Midrange (694)
1" Balanced Dome Mylar Tweeter

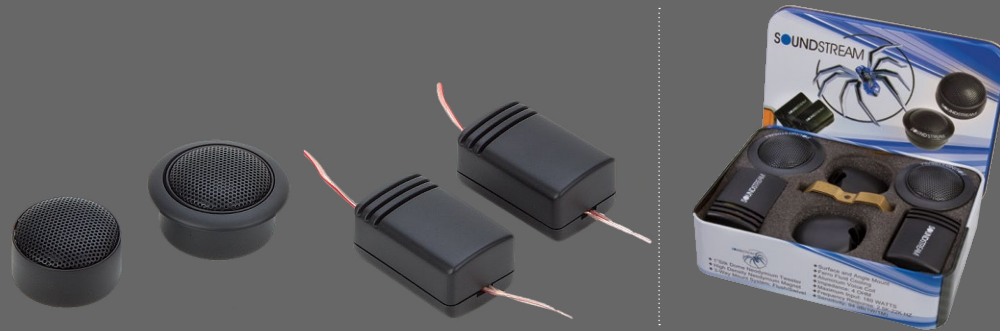
ARACHNID SPEAKERS	AF.694	AF.653	AF.573	AF.52	AF.42
Size and Configuration	6"x9" 4-way	6.5" 3-way	5"x7" 3-way	5.25" 2-way	4" 2-way
MAX Power (watts)	500	300	350	250	200
RMS Power (watts)	170	100	120	80	70
Efficiency (1w/1m dB)	93.00	92.00	92.00	90.00	90.00
Mounting Depth	3.25"	1.75"	2.625"	2.25"	1.75"

Tweeters

TWS.1

1" Soft Dome Tweeter

Ferrofluid cooled
Neodymium magnet
Tri-Mounting - flush, surface or angle
12dB/Octave passive crossover included
Rated Input Power: 110W
Impedance: 4ohm
Freq. Resp. 3KHz - 20KHz
SPL 93dB



TWS.3N

1" PEI Dome Tweeter

Tri-Mounting - flush, surface or angle
Adjustable eyeball design
Built-in 12 dB In-Line Crossover
Rated Input Power: 110W
Impedance: 4 ohm
Freq. Resp. 2KHZ-21KHZ
SPL 94dB



TWS.4

1" Tantalum Dome Tweeter

Polished aluminum housing
Dual-Mounting - surface or angle
Built-in 12 dB In-Line Crossover
Rated Input Power: 110W
Impedance: 4 ohm
Freq. Resp. 5KHZ-25KHZ
SPL 95dB



TWT.5

1" PEI Dome Tweeter

Surface or Angled Mounting
12dB Passive Crossover Included
Rated Input Power: 110W
Impedance: 4 ohm
Freq. Resp. 2KHZ-21KHZ
SPL 97dB



TWS.7

1" PEI Dome Tweeter

Ferrofluid cooled
Neodymium magnet
Tri-Mounting - flush, surface or angle
12dB/Octave passive crossover included
Rated Input Power: 110W
Impedance: 4ohm
Freq. Resp. 3KHz - 20KHz
SPL 93dB



NEW FOR
2017

Equalizers

MPQ-7B

1/2 DIN 7-Band Graphic EQ w/ Subwoofer Level Control

30V Bipolar Switching Power Supply
20dB Headroom Eliminated Signal Overload
2 Selectable Balanced RCA Inputs w/ Input gain
Front, Rear, & Subwoofer RCA Outputs
Seven Frequency Bands with +/- 18db Boost/Cut
40Hz, 100Hz, 275Hz, 700Hz, 2kHz, 5kHz, 14kHz
Independent Subwoofer Level Control
Selectable Low-Pass Filter: 32Hz, 64Hz, 125Hz
Input Selector Switch
Fade Control
Blue Backlit Control Knobs
S/N Ratio: 115dB
THD: 0.05%
Stereo Separation: 82dB
Frequency Response: 10Hz-15kHz
Max Output Voltage: 8V



MPQ-7XO

1/2 DIN Dual Channel Multi-Band Graphic EQ

20dB Headroom Switching Power Supply
Built-in Low Noise Bi-FET Op-Amps
2 Selectable Balanced RCA Inputs w/ Input Gain
Front, Rear, & Subwoofer RCA Outputs
Four 18dB Front Bands 125Hz; 500Hz; 3.5kHz; 12kHz
Three 18dB Rear Bands 50Hz; 600Hz; 6.3kHz
Variable 18dB Bass Boost; 20-70Hz
Independent Subwoofer Level Control
Selectable Subsonic Filter; 32Hz; 64Hz; 125Hz
Fade Control
Blue Backlit Control Knobs
Frequency Response: 10-100kHz
Output Signal Voltage Up To 8V
THD: .05%
Signal-to-Noise Ratio: 115dB
7"w x 4.25"d x 1.125"h



MPQ-5XO

1/2 DIN 3-Band Parametric EQ w/ Subwoofer Level Control

20dB Headroom Switching Power Supply
Built-in Low Noise Bi-FET Op-Amps
2 Selectable Balanced RCA Inputs w/ Variable Input Gain
Front, Rear, & Subwoofer RCA Outputs
3 Variable Bandwidths; 18dB of Equalization
150-400Hz (Bass); 1.5-4kHz (Mid); 4-20kHz (High)
Variable 18dB Bass Boost; 20-70Hz
Independent Subwoofer Level Control
Variable Subsonic Filter; 50-250Hz
Fade Control
Blue Backlit Control Knobs
Frequency Response: 10-100kHz
Output Signal Voltage Up To 10V
THD: .005%
Signal-to-Noise Ratio: 110dB
7"w x 3.625"d x 1.125"h



Bass Processors

BX-22i Digital Bass Reconstruction Processor

High Tolerance SMD Technology
All Aluminum Chassis
Dash Mount Remote Control
PFM Subsonic Filter & Bass Level Control
Parametric Bass Equalizer
Variable Frequency Sweep
Variable Q Width
Variable PWM Subsonic Filter
Low Level RCA Input
Low Level RCA Output
Signal Sense Remote Turn-on
PWM High Head Room Power Supply
Frequency Response: 10Hz 100KHz
THD: 0.002%
S/N Ratio: 132dB
Balanced Input Noise Rejection: 60 dB
MAX Output Level: 13.5 volt



BX-20Z Digital Bass Reconstruction Processor

Max Bass Control
Dash Mount Remote Control
PFM Subsonic Filter & Bass Level Control
Illuminated logo and knobs
Chrome Logo Plate
Bass Restoration Lighted Display
Parametric Bass Control
PFM Subsonic Filter
Balanced Inputs
Bass Output Control
PWM High Head Room Power Supply
Output Level: 13.5 volt
Frequency Response: 10Hz 100KHz
THD: 0.002%
S/N Ratio: 132dB
Balanced Input Noise Rejection: 60 dB



BX-15 Digital Bass Reconstruction Processor

Max Bass Control
PWM High Head Room Power Supply
Balanced Input Noise Rejection: 60 dB
Frequency Response: 10Hz 100KHz
Dash Mount Remote Control
PFM Subsonic Filter & Bass Level Control
Illuminated logo and knobs
Brushed Aluminum Case & Handles
Bass Restoration Lighted Display
Parametric Bass Control
PFM Subsonic Filter
Balanced Inputs
Bass Output Control
Output Level: 13.5 volt
THD: 0.002%
S/N Ratio: 132dB



BX-12 (black) BX-12W (white) Digital Bass Reconstruction Processor

Max Bass Control
PWM High Head Room Power Supply
Frequency Response: 10Hz 100KHz
Dash Mount Remote Control
Bass Restoration Lighted Display
Parametric Bass Control
PFM Subsonic Filter
Balanced Inputs
Bass Output Control
Output Level: 13.5 volt
THD: 0.003%
S/N Ratio: 130dB
Balanced Input Noise Rejection: 60 dB



BX-10X Digital Bass Reconstruction Processor

Max Bass Control
PWM High Head Room Power Supply
Frequency Response: 10Hz 100KHz
Dash Mount Remote Control
Bass Restoration Lighted Display
Parametric Bass Control
PFM Subsonic Filter
Balanced Inputs
Bass Output Control
Output Level: 13.5 volt
THD: 0.003%
S/N Ratio: 130dB
Balanced Input Noise Rejection: 60 dB



BX-10 (black) BX-10W (white) Digital Bass Reconstruction Processor

Max Bass Control
PWM High Head Room Power Supply
Frequency Response: 10Hz 100KHz
Dash Mount Remote Control
Bass Restoration Lighted Display
Parametric Bass Control
PFM Subsonic Filter
Balanced Inputs
Bass Output Control
Output Level: 13.5 volt
THD: 0.003%
S/N Ratio: 130dB
Balanced Input Noise Rejection: 60 dB





SM.800PRO



SM.650PRO



SM.800



SM.650PROC



Components.



SM.690



SM.650

NEW FOR
2017

SM PRO Series Speakers	SM.650PRO	SM.650PROC	SM.800PRO
Size	6.5"	6.5"	8"
MAX Power Handling	250w	250w	400w
RMS Power Handling	125w	125w	200w
Impedance	4-Ohm	4-Ohm	4-Ohm
Frequency Response	150-10kHz	150-25kHz	150-10kHz
Efficiency (1w/1m)	94dB	96dB	97dB
Mounting Depth	3.00"	3.00"	3.50"

SM Series Speakers	SM.650	SM.650C	SM.690	SM.800
Size	6.5"	6.5"	6" x 9"	8"
MAX Power Handling	200w	250w	250w	300w
RMS Power Handling	100w	125w	125w	150w
Impedance	4-Ohm	4-Ohm	4-Ohm	4-Ohm
Frequency Response	150Hz-10kHz	150Hz-25kHz	100Hz-10kHz	100Hz-10kHz
Efficiency (1w/1m)	91dB	93dB	93dB	94dB
Mounting Depth	2.75"	2.75"	3.00"	3.25"



SME.800



SME.650



SM2.800

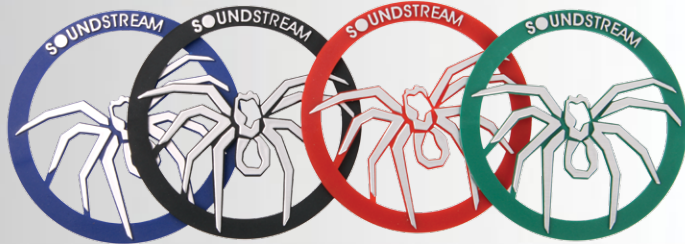


SME.650C



SM2.650

SME Series Speakers	SME.650	SME.650C	SME.800	SM2.650	SM2.800
Size	6.5"	8"	8"	6.5"	8"
MAX Power Handling	200w	250w	250w	250w	400w
RMS Power Handling	100w	125w	125w	125w	200w
Impedance	4-Ohm	4-Ohm	4-Ohm	4-Ohm	4-Ohm
Frequency Response	150-10kHz	150-25kHz	100-10kHz	150-25kHz	100-25kHz
Efficiency (1w/1m)	91dB	93dB	94dB	94dB	97dB
Mounting Depth	2.50"	3.50"	3.50"	3.50"	4.50"



SPT.22



SPT.20



SPT.06

NEW FOR 2017



SPT.05

DRIVERS



SPD.400



SPD.300



SPD.200

Pro Audio Tweeters	SPT.05	SPT.06	SPT.20	SPT.22	SPD-200	SPD-300	SPD.400
MAX Power Handling	250w	350w	350w	600w	200w	300w	400w
RMS Power Handling	125w	175w	175w	300w	100w	150w	200w
Voice Coil & Diaphragm	1" Aluminum	1" Aluminum	1" Aluminum	1.75" Aluminum	1" Aluminum	2" Titanium	3" Titanium
Impedance	4-Ohm	4-Ohm	4-Ohm	4-Ohm	4-Ohm	4-Ohm	8-Ohm
Frequency Response	2kHz-20kHz	2kHz-25kHz	2kHz-20kHz	2kHz-25kHz	3kHz-20kHz	1.5kHz-20kHz	500Hz-25kHz
Efficiency (1w/1m)	104dB	102dB	105dB	106dB	101dB	107dB	110dB
Mounting Depth	2.00"	1.125"	2.125"	2.50"			7.50"

MARINE
POWERSPORT
HEAD UNITS

MHU-32SXM
Marine Grade Digital Media Player w/ SiriusXM Interface,
32GB USB Playback, Bluetooth V4.0, & 3-Zone Audio



MHU-32SXM Upgrades Include:
Ready for Sirius XM Satellite Radio Tuner SXV300;
Enjoy over 140 channels, including commercial-free music
plus the best sports, news, talk, comedy and entertainment
3.2" Color TFT LCD Display w/ Interactive Graphic User Interface
Rear USB Input for MP4 Video, MP3 & Other Audio File Playback
3-Zone Audio Outputs w/ Independent Volume Level;
4V 2-Channel Stereo Pre-Amp RCA Outputs (x3)
4V 2-Channel Subwoofer Pre-Amp RCA Output
Independent Subwoofer Volume Level & Crossover



SMR-21B
Single DIN CD Player w/32GB USB Playback & Bluetooth



NEW FOR
2017

MHU-32
Marine Grade Digital Media Player w/32GB USB
Playback, Bluetooth V4.0, & 2-Zone Audio



MHU-32 Series Standard Features & Specifications:
Marine Grade IP65 Watertight Enclosure Construction
Conformal Coated Printed Circuit Boards & Components
Zero Current Draw EPROM Memory Retains Presets
Quick Disconnect Wire Harness for Pre-wire Installations
Aluminum U-Bracket Mounting Hardware Included
Waterproof Rubber Keys w/ 7-Color LED Backlighting
Digital Media Player w/ AM/FM & Weatherband Tuner
Bluetooth V4.0 Hands Free Calling from Enabled Devices
A2DP Wireless Audio Playback from Enabled Devices
Rear USB Input for MP3 & Other Audio File Playback
Second Zone Audio Output w/ Independent Volume Level
2-Band Equalizer with Audio Staging Controls
300w 4-Channel High Level Speaker Outputs, 4-ohm Stable
2-Channel Stereo RCA Audio Input for Personal Media Players
On-Screen Battery Low Voltage Warning Indicator
Overall Dimension: 5 1/8" W x 3" H x 2.25" D

CD/MP3, AM/FM & USB Receiver
Theft Deterrent Detachable Faceplate
Bluetooth V2.0 Hands Free Calling from Enabled Phone
A2DP MP3 Audio Playback from Enabled Device
Playback from 32GB USB of MP3 & WMA
Playback from CD, CDR, CDRW of MP3 & WMA
AUX Audio Input for Personal Media Devices
Front & Rear Pre-Amp Output
300w 4ch. MOSFET Speaker Outputs
Custom & Pre-Set Equalizer Settings
Audio Staging Controls
12/24 Hour Digital Clock
Remote Control Included
Faceplate Carry Case Included



STEALTH
MARINE
POWERSPORT
AMPLIFIER

95%+ Efficient
Class D Full Range

Only 3" x 6" !

Install-Me-Anywhere
Micro Footprint



High Efficiency Class D Full Range & Monoblock Amplifiers
Hybrid Aluminum Alloy Heatsink for Optimum Dissipation
2-ohm Stereo & 4-ohm Bridged Full Range Operation
2-ohm Minimum Impedance Monoblock Operation
Built-in Bluetooth V3.0 for Wireless Mobile Device Playback*
MOSFET Power Supply w/ Audiophile Grade IRTM Transistors
Military Grade SMT PCB Maintains Dynamic Performance
Splash Resistant Conformal Coated Circuit Boards
Direct Short, Thermal, & Overload Circuits Protect Amplifier
200mV-12V High Level or Low Level RCA Input
Quick Disconnect RCA/High Level Wire Harness
Quick Disconnect Power and Speaker Output Harness
Variable 12dB High Pass, Low Pass, & Subsonic Crossovers
12dB Bass Boost Increases Low Octave Harmonics (SM1)
Dash Mount Gain Control Module Included (SM1)



Stealth Amplifiers	SM4.1000D	SM1.700D	ST4.1000DB
RMS Power 4Ω	90 x 4	250 x 1	90 x 4
RMS Power 2Ω	125 x 4	350 x 1	125 x 4
RMS Power 4Ω Bridged	250 x 2	-	250 x 2
MAX Power	1000w	700w	1000w
Remote Gain Control	-	Included	-
Dimensions (3"w x 1.5"h)	6.50"	6.50"	7.75"

Rubicon
NANO

High Efficiency Class D Full Range Amplifiers
Hybrid Aluminum Alloy Heatsink for Optimum Dissipation
2-ohm Stereo & 4-ohm Bridged Class D Full Range
1-ohm Minimum Impedance Monoblock Operation
MOSFET Power Supply w/ Audiophile Grade IRTM Transistors
Military Grade SMT PCB Maintains Dynamic Performance
Splash Resistant Conformal Coated Circuit Boards
Direct Short, Thermal, & Overload Circuits Protect Amplifier
200mV-6V Low Level RCA or High Level Signal Input
Quick Disconnect High Level Wire Harness Included
Easy DIY Install Single Sided Terminals & Controls
4g Power Inout Terminals & 12g Speaker Output Terminals
Variable 12dB High Pass, Low Pass, & Subsonic Crossovers
12dB Bass Boost Increases Low Octave Harmonics
Dash Mount Gain Control Module Included



Rubicon Nano	MR4.1400D	MR5.2000D	MR1.2000D
RMS Power 4Ω	125 x 4	75 x 4 + 300 x 1	400 x 1
RMS Power 2Ω	175 x 4	125 x 4 + 500 x 1	600 x 1
RMS Power 4Ω Bridged	350 x 2	250 x 2 + 500 x 1 (2Ω)	1,000 x 1 (1Ω)
Remote Gain Control	-	Included	Included
Dimensions: (6.50" w x 1.50"h)	9.00"	12.00"	10.00"

WAKE TOWER SPEAKERS

WTS Wake Tower Speakers offer maximum performance in the open air environment of any boat or off-road vehicle. Considering extreme outdoor conditions, WTS systems use the best materials to defend potentially damaging effects of water and UV sunlight, and impact resistance. Additional options for WTS enclosures include bright white or RGB LED grill rings, and a rear mounted high intensity LED spot light. Each WTS enclosure is pre-wired for the optional LED rings and spot light, making future add-on simple.

Immediately available WTS sets include 6.5" & 8" coaxial, in brilliant gloss white and black. Available spring 2017 in time for the 2017 boat season, an additional 8" coaxial set will feature a high efficiency horn loaded compression tweeter and midrange driver. Whatever your application, WTS speaker systems are guaranteed to carry your tunes across any lake, river, or desert.

Enclosure Construction

WTS enclosure construction begins with Centrex, a material made in the USA, that offers incredible advantages to traditional polymer materials. Centrex is resilient to extreme temperatures, chemicals, & weathering, while maintaining impervious structural density. WTS enclosures resist harmful sunlight from deteriorating its brilliant coloring thanks to a UV inhibitor blended with the raw Centrex material.

Following the concept of superior materials, WTS mounting clamps are cast aluminum, with adjustment to 2.5" diameter, and can rotate 360°. Included rubber inserts accommodate installation to most round or oval watercraft wake towers and off-road vehicle roll cages. All speaker, LED ring, and LED spot light pre-wire passes thru the mounting bracket center, keeping all wiring contained in a dry environment.

Speaker Characteristics

Coaxial speakers of WTS use waterproof materials, including blended polypropylene-mica cones, titanium dome tweeter, and rubber gaskets around the tweeter bridge. A neoprene gasket under the speaker frame prevents moisture from entering the enclosure, eliminating the possibility of electrical shorting. Color matching grills made of Centrex and a stainless steel mesh over the tweeter prevent harmful damage by rogue debris.

WTS-6W	Pair (2) of Gloss White 6.5" Wake Tower Speakers
WTS-6B	Pair (2) of Gloss Black 6.5" Wake Tower Speakers
WTS-8W	Pair (2) of Gloss White 8" Wake Tower Speakers
WTS-8B	Pair (2) of Gloss Black 8" Wake Tower Speakers
WTS-LED	Pair (2) of LED Spot Lights for WTS
LED-6W	Pair (2) of 6.5" Bright White LED Speaker Rings
LED-6RGB	Pair (2) of 6.5" RGB LED Speaker Rings
LED-8W	Pair (2) of 8" Bright White LED Speaker Rings
LED-8RGB	Pair (2) of 8" RGB LED Speaker Rings
LED-10RGB	Single (1) 10" RGB LED Speaker Ring

8" Wake Tower
Speaker w/ HLCD
Coming Spring
2017!



LED-6RGB

LED-8W

LED-8RGB

WTS-LED

MARINE
POWERSPORT
SPEAKERS

NEW FOR
2017

MCS coaxial speakers and MSW subwoofer are a necessity to rockin' out in your boat or off-road vehicle. Using the same critical moisture and UV resistant Centrex™ material of the WTS wake tower enclosures, you can bet they withstand extreme outdoor conditions. Everyone will hear you coming thanks to ultra-light weight blended polypropylene-mica cones and ear piercing titanium dome tweeter. Each speaker set and subwoofer includes matching gloss white and gloss black grills with anodized aluminum mesh, and are pre-wired to install optional RGB LED grill rings. For that extra edge over the next guy, check out the 10" MCS coaxial speaker, guaranteed to knock anyone off their feet!!!



MCS.65

- Premium Marine Grade 6.5", 8", 10" Speakers & 10" Subwoofer
- Injection Molded Frame & Grill Using Centrex® 814 UV Resistant Polymer
- Electro-Magnetic Components Sealed Internally within the Frame Structure
- Brushed Aluminum Grill Mesh Prevents Accidental Punctures
- Matching Gloss Black & Gloss White Grills Included with Each Set
- Injection Molded Polypropylene-Mica Composite Speaker Cone
- 1.25" Extreme Temperature Tolerant Voice Coil w/ Epoxy Coating
- 1" Formed Titanium Extended Frequency Range Dome Tweeter
- Closed-back Coaxial Tweeter w/ Isolated Electrical Connections
- Chemical and UV Resistant Thermo-Formed Rubber Gaskets & Surround
- Prewired Connection Terminals for Available LED Light Rings Built-in



MCS.80

MARINE SPEAKERS	MCS.65	MCS.80	MCS.10
Size and Configuration	6.5" 2-way	8" 2-way	10" 2-way
MAX Power (watts)	200w	250w	300w
RMS Power (watts)	100w	125w	150w
Efficiency (1w/1m dB)	89.30dB	90.20dB	90.60dB
Mounting Depth	3.50"	4.00"	4.50"



MCS.10

NEW FOR
2017



MSW.102/104

MARINE SUBWOOFER	MSW.102	MSW.104
MAX Power (watts)	600w	
RMS Power (watts)	300w	
Efficiency (1w/1m)	86.40dB	
Voice Coil Configuration	2" DVC 2Ω	2" DVC 4Ω
Mounting Depth	4.50"	
Optimum Sealed ft³	0.75ft³	
Optimum Ported ft³	1.00ft³	

- LED-6W
- LED-6RGB
- LED-8W
- LED-8RGB
- LED-10RGB

Pair (2) of 6.5" Bright White LED Speaker Rings
Pair (2) of 6.5" RGB LED Speaker Rings
Pair (2) of 8" Bright White LED Speaker Rings
Pair (2) of 8" RGB LED Speaker Rings
Single (1) 10" RGB LED Speaker Ring





SOUNDSTREAM

© 2017 SOUNDSTREAM TECHNOLOGIES Montebello, CA, U.S.A.

All Right reserved.

Specifications and designs are subject to change without notice.

Printed in U.S.A.

