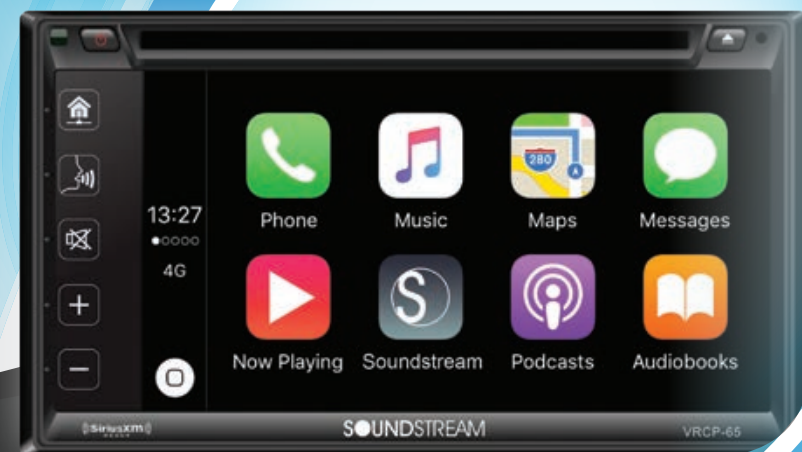


# SOUNDSTREAM

The Ultimate Listening Experience



soundstream.com



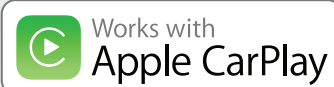
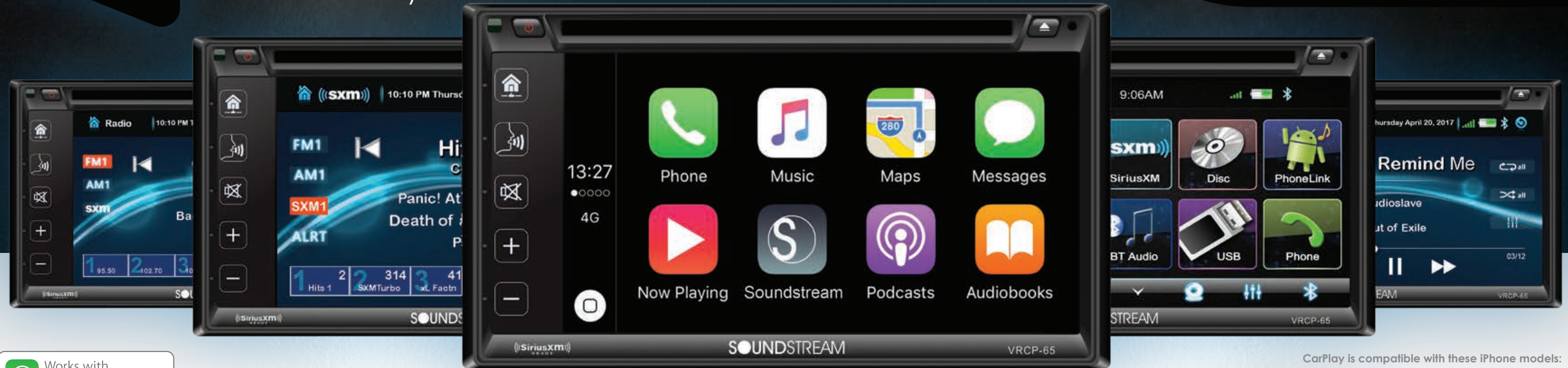
VRCP 65

# Car Multimedia Entertainment Center w/ Apple CarPlay, Android PhoneLink, & SiriusXM-Ready™

NEW FOR  
2018



DVD



CarPlay is a smarter, safer way to use your iPhone in the car. CarPlay takes the things you want to do with your iPhone while driving and puts them right on your car's built-in display. You can get directions, make calls, send and receive messages, and listen to music, all in a way that allows you to stay focused on the road. Just connect your iPhone and go.

## Car Multimedia Entertainment Center General Functions:

- ISO 2-DIN Chassis Installs in Most Newer Vehicles
- Apple CarPlay & SiriusXM Radio Tuner Interface
- SiriusXM-Ready™ (Vehicle tuner and subscription required)
- Bluetooth V4.0 Hands-Free Wireless Connectivity
- DVD, CD & USB MP3 & MP4 Multimedia Playback
- Advanced FM/AM Tuner with RDS Data Display
- Accepts OEM Steering Wheel Control Interfaces
- Wireless Direct Select Remote Control Included
- Rear View Camera Input Manual & Auto-Trigger

## Bluetooth V4.0 Hands-Free Wireless Connectivity:

- Hands-Free Profile Dials & Receives Calls & Displays Call Logs
- Phone Book Access Profile Displays Caller ID Info & Contacts
- Audio/Video Remote Control Profile Enables Playback Controls
- Advanced Audio Distribution Profile Streams Audio Wirelessly

## SiriusXM Satellite Radio Ready

Only SiriusXM® brings you more of what you love to listen to, all in one place. Get over 140 channels, including commercial free music plus the best sports, news, talk, comedy and entertainment. Welcome to the world of satellite radio. A SiriusXM Vehicle Tuner and Subscription are required. For more information, visit [www.siriusxm.com](http://www.siriusxm.com)

*Sirius, XM and all related marks and logos are trademarks of Sirius XM Radio Inc. All rights reserved.*

## Dynamic User Interface w/ SmartSense Touchscreen

- 6.2" HD Quality High Resolution TFT-LCD Display
- Pinpoint Accuracy Capacitive Touchscreen
- Low Reflection Industrial Grade Glass Top Panel
- Large Format User Interface Reduces Distraction
- 7 Color Selectable Touch Key Illumination

## PhoneLink Complete Android Mobile Device Integration:

- Enabled Smart Device Mirrors Display to Head Unit
- 2-way Communication Enables Mobile Device Control
- Stay Connected without Handling Distracting Devices
- Retains Use of Smart Device's Voice Recognition Service
- Connection Requires Original USB Charging Cable
- 1A USB Charging Maintains Battery Life (rear)

## USB Audio/Video Playback

- Playback of MP3 & WMA Audio Files from 64GB USB
- Playback of AVI, MP4, & H264 Video Files from 64GB USB
- View JPEG, GIF, PNG, and BMP Image Files from 64GB USB
- ID3 MP3 Tag Reading for Track & Artist Information

## Audio/Video Configurations

- Rear Audio/Video Input for Personal Media Devices
- Front & Rear RCA Pre-Amp Audio Outputs, 4V
- Subwoofer RCA Pre-Amp Audio Output, 4V
- Video RCA Output to Auxiliary Devices
- 300w 4ch. High Power MOSFET Speaker Outputs



VRCP-65 also includes Android PhoneLink mobile device integration. PhoneLink enables complete control of select Android based smartphones and tablets by the operating systems. Conveniently launch any application, post social media updates, or play your own videos and all other content on your mobile device. Your smart device display is mirrored to the head units larger LCD screen via simple USB connection. Android PhoneLink ensures safe, hands-free operation of devices without distraction. Requires original USB cable.

CarPlay is compatible with these iPhone models:

- iPhone 7,
- iPhone 7 Plus iPhone 6s,
- iPhone 6s Plus iPhone 6,
- iPhone 6 Plus iPhone SE, iPhone 5s,
- iPhone 5c, iPhone 5





# Dual Display Source Unit

Soundstream's Dual Display Multimedia System is the first of its kind, enabling multitask functionality in a car stereo application. Concurrent operating systems running simultaneously allow the user to operate the two different platforms. The user has the option to control the included iGO powered GPS system on the upper display, or Android PhoneLink which mirrors the screen of their enabled smart device. The second operating system includes typical features of a car multimedia system; DVD, Bluetooth Connectivity, audio/video media playback by USB, FM receiver, rear view camera, etc.

Extensive details were considered for the build of this unique application. Each high resolution TFT-LCD display includes a capacitive touch screen panel, mimicking the interaction and experience of today's smart devices. In efforts to ensure mechanical reliabilities, the independent motorization mechanisms use alloy steel gearing and high torque drive motors, capable of standing up to the abuse of today's road conditions.

Attention to quality of the user's interaction were considered in the design phase of the dual display's user interface. Large format, easy to read info-data and icons were drawn to improve the ease of use. The user interface concept included solutions to reduce driver distraction and improve operator awareness.



**Worlds first head unit w/ Two independent 7" Displays!**

**Two Motorized 7" LCD Touch Screens in one 2-DIN chassis**

**Watch videos and iGo GPS navigation simultaneously**

**Control your Android Mobile Phone with PhoneLink**

**But Wait, there's more....**

# Dual Display Source Unit

**VRN-DD7HB**

2-DIN GPS Navigation, DVD, CD/MP3, AM/FM Receiver w/ Dual 7" LCD Touch Screens, Android PhoneLink, & Bluetooth 4.0 Connectivity



### Additional Dual Display Details:

- SmartSense Glass Panel Touch Screen Technology
- Bluetooth V4.0 Hands-Free Calling from Enabled Phone
- A2DP Wireless MP3 Audio Playback from Enabled Device
- Built-in Front Panel Bluetooth Microphone
- Accepts OEM Steering Wheel Control Interfaces
- Playback from DVD & CD of MP3, MP4 & Other Video
- Playback from 64GB USB of MP3, MP4 & Other Video (rear)
- 2A 5V Adaptive Fast Charge of Mobile Devices (rear)

- ID3 MP3 Tag Reading for Track & Artist Information
- Rear Audio/Video Input for Personal Media Devices
- Front & Rear RCA Pre-Amp Audio Outputs
- Subwoofer RCA Pre-Amp Audio Output
- Video Output for Auxiliary Devices
- Rear View Camera Input w/ Trigger
- 300w 4ch. MOSFET Speaker Outputs
- Multi-Region FM Frequency Stepping
- 800x480 Widescreen Resolution



**DVD**





AptiX Source Units



AptiX operating systems use an advanced microprocessors and central processing unit bringing lightning fast reaction time into automotive multimedia entertainment systems. Premium AptiX units feature built-in advanced GPS Navigation with Android PhoneLink 2-way MHL complete smart phone integration, or Sirius/XM satellite radio interface. Standards for all AptiX models include SmartSense capacitive glass touch panel, Bluetooth V4.0 for hands-free calling, Adaptive Fast Charging of enabled mobile devices, and more. Select AptiX units add multi-color illumination or an advanced audio staging equalizer.



Premium Aptix Source Units feature GPS turn-by-turn navigation for all 50 United States, powered by iGo Primo.

Set your destination to one of nearly 17 million available points of interest, or your own unique location. Follow the on-screen directions or audible text-to-speech commands, including lane departure guidance. Additional features include favorites list, programmable home destination, destination fuel estimates, multi-lingual, multi-gender voices, speed limit warnings, & more! Map Updates available from Naviextras.com.



Premium Aptix GPS Navigation source units also include Android PhoneLink mobile device integration. PhoneLink enables complete control of select Android smartphones and tablets by the Aptix operating system.

Conveniently launch any application, post social media updates, or play your own videos and all other content on your mobile device. Your smart device display is mirrored to the head units larger LCD screen via simple USB connection. Android PhoneLink ensures safe, hands-free operation of your smart device without distraction.



Addition to the great features of the Aptix OS, select "XB" models include interface for SiriusXM's satellite radio tuner SXV300 (sold separately). Welcome to commercial-free music from every genre, live play-by-play sports, the biggest news and talk, and the hottest entertainment at your fingertips, 24/7. Enjoy over 140 channels, including commercial-free music plus the best sports, news, talk, comedy and entertainment. SiriusXM signal coverage spans over 3.7 million square miles, coast to coast. No longer will you worry about losing reception.

Additional AptiX Details:

- SmartSense Glass Panel Touch Screen Technology
- Bluetooth V4.0 Hands-Free Calling from Enabled Phone
- A2DP Wireless MP3 Audio Playback from Enabled Device
- Built-in Front Panel Bluetooth Microphone
- Accepts OEM Steering Wheel Control Interfaces
- Playback from DVD & CD of MP3, MP4 & Other Video
- Playback from 64GB USB of MP3, MP4 & Other Video

- 2A 5V Adaptive Fast Charge of Mobile Devices
- ID3 MP3 Tag Reading for Track & Artist Information
- Rear Audio/Video Input for Personal Media Devices
- Front & Rear RCA Pre-Amp Audio Outputs
- Subwoofer RCA Pre-Amp Audio Output
- Video Output for Auxiliary Devices
- Rear View Camera Input w/ Trigger
- 300w 4ch. MOSFET Speaker Outputs

VR-1032XB

2-DIN DVD, CD/MP3, AM/FM Receiver w/ Sirius/XM Tuner Interface, Bluetooth 4.0 Connectivity, & Detachable 10.3" LCD



VR-1032XB	
iGo GPS	-
PhoneLink	-
SiriusXM Ready	Yes

Standard Features & Specifications

Chassis	ISO 2-Din, Sleeve Included
LCD Size/Type	10.3" 800x480 16:9 Aspect Ratio
Touchscreen	SmartSense Capacitive Touch
Detachable	Yes
Bluetooth 4.0	Phone Calling + A2DP Audio Streaming
Disc Playback	720P MP4 & WMV; MP3 & WMA Audio
USB Playback	64GB; 720P MP4, WMV, WMA; MP3
AUX Input	3.5mm AUX Audio Input
SWC Control	Accepts OEM SWC Interfaces
Audio Outputs	Front + Rear + Subwoofer, 2V
Video Output	RCA Composite, 500mV
Rear Camera	RCA Composite w/ +12V Trigger

2-DIN w/ Detachable 10.3" LCD Screen!

aptiX 75 Series Source Units

Includes iGo GPS Navigation & Android PhoneLink - **VRN-75HB**

Includes SiriusXM Tuner Interface - **VR-75XB**

Standard Features - **VR-75B**

ISO 1-DIN DVD, CD/MP3, AM/FM Receiver w/ Bluetooth 4.0 Connectivity, & 7" Touchscreen LCD



75 SERIES	VRN-75HB	VR-75XB	VR-75B
iGo GPS	Primo 9.0	-	-
PhoneLink	Android	-	-
SiriusXM Ready	-	Yes	-

Standard Features & Specifications

Chassis	ISO 1-Din, Sleeve Included
LCD Size/Type	7" 800x480 16:9 Aspect Ratio
Touchscreen	SmartSense Capacitive Touch
Detachable	Lower Faceplate, Carry Case Included
Bluetooth 4.0	Phone Calling + A2DP Audio Streaming
Disc Playback	DVD: 720P MP4/MP3, WMV; CD: MP3, WMA
USB Playback	64GB; 720P MP4, WMV, WMA; MP3
AUX Input	3.5mm AUX Audio Input
SWC Control	Accepts OEM SWC Interfaces
Audio Outputs	Front + Rear + Subwoofer, 2V
Video Output	RCA Composite, 500mV
Rear Camera	RCA Composite w/ +12V Trigger



**VRN-65HXB** - Includes iGo GPS Navigation & SiriusXM Tuner Interface

**VRN-65HB** - Includes iGo GPS Navigation & Android PhoneLink

**VR-65XB** - Includes SiriusXM Tuner Interface

**VR-65B** - Standard Features

ISO 2-DIN DVD, CD/MP3, AM/FM Receiver w/ Bluetooth 4.0 Connectivity, & 6.2" Touchscreen LCD



65 SERIES	VRN-65HXB	VRN-65HB	VR-65XB	VR-65B
iGo GPS	Primo 9.0	Primo 9.0	-	-
PhoneLink	-	Android	-	-
SiriusXM Ready	Yes	-	Yes	-

**Standard Features & Specifications**

Chassis	ISO 2-Din, Sleeve Included
LCD Size/Type	6.2" 800x480 16:9 Aspect Ratio
Touchscreen	SmartSense Capacitive Touch
Detachable	-
Bluetooth 4.0	Phone Calling + A2DP Audio Streaming
Disc Playback	DVD: 720P MP4/MP3, WMV; CD: MP3, WMA
USB Playback	64GB; 720P MP4, WMV, WMA; MP3 (rear)
AUX Input	RCA Audio Inputs (rear)
SWC Control	Accepts OEM SWC Interfaces
Audio Outputs	Front + Rear + Subwoofer, 2V
Video Output	RCA Composite, 500mV
Rear Camera	RCA Composite w/ +12V Trigger



Includes iGo GPS Navigation & Android PhoneLink - **VRN-63HB**

Includes SiriusXM Tuner Interface - **VR-63XB**

Standard Features - **VR-63B**

ISO 2-DIN DVD, CD/MP3, AM/FM Receiver w/ Bluetooth 4.0 Connectivity, & 6.2" Touchscreen LCD



63 SERIES	VRN-63HB	VR-63XB	VR-63B
iGo GPS	Primo 9.0	-	-
PhoneLink	Android	-	-
SiriusXM Ready	-	Yes	-

**Standard Features & Specifications**

Chassis	ISO 2-Din, Sleeve Included
LCD Size/Type	6.2" 800x480 16:9 Aspect Ratio
Touchscreen	Resistive Touchscreen
Detachable	-
Bluetooth 4.0	Phone Calling + A2DP Audio Streaming
Disc Playback	720P MP4 & WMV; MP3 & WMA Audio
USB Playback	64GB; 720P MP4, WMV, WMA; MP3
AUX Input	3.5mm AUX Audio Input
SWC Control	Accepts OEM SWC Interfaces
Audio Outputs	Front + Rear + Subwoofer, 2V
Video Output	RCA Composite, 500mV
Rear Camera	RCA Composite w/ +12V Trigger





**VRN-624B** - Includes GPS Navigation  
**VR-624B** - Standard Features  
ISO 2-DIN DVD, CD/MP3, AM/FM Receiver w/ Bluetooth 4.0 Connectivity, & 6.2" LCD

NEW FOR  
2018



624 Series	VRN-624HB	VR-624B
iGo GPS	Primo 9.0	-
PhoneLink	-	-
SiriusXM Ready	-	-

Standard Features & Specifications	
Chassis	ISO 2-Din, Sleeve Included
LCD Size/Type	6.2" 800x480 16:9 Aspect Ratio
Touchscreen	Resistive Touchscreen
Detachable	-
Bluetooth 4.0	Phone Calling + A2DP Audio Streaming
Disc Playback	720P MP4 & WMV; MP3 & WMA Audio
USB Playback	64GB; 720P MP4, WMV, WMA; MP3
AUX Input	3.5mm AUX Audio Input
SWC Control	Accepts OEM SWC Interfaces
Audio Outputs	Front + Rear + Subwoofer, 2V
Video Output	RCA Composite, 500mV
Rear Camera	RCA Composite w/ +12V Trigger



DVD



**VR-651B**  
2-DIN DVD, CD/MP3, USB/SD, AM/FM Receiver w/ Bluetooth Connectivity & 6.5" LCD

VR-651B	
Chassis	ISO 2-Din, Sleeve Included
LCD Size/Type	6.5" 800x480 16:9 Aspect Ratio
Touchscreen	Resistive Touchscreen
Detachable	-
Bluetooth 4.0	Phone Calling + A2DP Audio Streaming
Disc Playback	720P MP4 & WMV; MP3 & WMA Audio
USB Playback	64GB; 720P MP4, WMV, WMA; MP3
AUX Input	3.5mm AUX Audio Input
SWC Control	Accepts OEM SWC Interfaces
Audio Outputs	Front + Rear + Subwoofer, 2V
Video Output	RCA Composite, 500mV
Rear Camera	RCA Composite w/ +12V Trigger



DVD



**VR-345XB** - Includes SiriusXM Tuner Interface  
**VR-345B** - Standard Features  
1-DIN DVD, CD/MP3, AM/FM Receiver w/ Bluetooth 4.0 Connectivity, & Detachable 3.4" LCD



345 Series	VR-345XB	VR-345B
iGo GPS	-	-
PhoneLink	-	-
SiriusXM Ready	Yes	-

Standard Features & Specifications	
Chassis	ISO 1-Din, Sleeve Included
LCD Size/Type	3.4" 720x420 16:9 Aspect Ratio
Touchscreen	-
Detachable	Faceplate, Carry Case Included
Bluetooth 4.0	Phone Calling + A2DP Audio Streaming
Disc Playback	720P MP4 & WMV; MP3 & WMA Audio
USB Playback	64GB; 720P MP4, WMV, WMA; MP3
AUX Input	3.5mm AUX Audio Input
SWC Control	Accepts OEM SWC Interfaces
Audio Outputs	Front + Rear + Subwoofer, 2V
Video Output	RCA Composite, 500mV
Rear Camera	RCA Composite w/ +12V Trigger



DVD



**VIR-7830B**  
1-DIN DVD, CD/MP3, USB/SD, AM/FM Receiver w/ Bluetooth Connectivity & 7" LCD

VIR-7830B	
Chassis	ISO 1-Din, Sleeve Included
LCD Size/Type	7" 800x480 16:9 Aspect Ratio
Touchscreen	Resistive Touchscreen
Detachable	Lower Faceplate
Bluetooth 4.0	Phone Calling + A2DP Audio Streaming
Disc Playback	720P MP4 & WMV; MP3 & WMA Audio
USB Playback	64GB; 720P MP4, WMV, WMA; MP3
AUX Input	3.5mm AUX Audio Input
SWC Control	Accepts OEM SWC Interfaces
Audio Outputs	Front + Rear + Subwoofer, 2V
Video Output	RCA Composite, 500mV
Rear Camera	RCA Composite w/ +12V Trigger



DVD





VR-732B

1-DIN DVD, CD/MP3, USB/SD, AM/FM Receiver w/ Bluetooth Connectivity & Motorized 7" Touchscreen LCD



VR-732B	
Chassis	ISO 1-Din, Sleeve Included
LCD Size/Type	7" 800x480 16:9 Aspect Ratio
Touchscreen	Resistive Touchscreen
Detachable	Faceplate, Carry Case Included
Bluetooth 4.0	Phone Calling + A2DP Audio Streaming
Disc Playback	DVD: 720P MP4/MP3, WMV; CD: MP3, WMA
USB Playback	64GB; 720P MP4, WMV, WMA; MP3
AUX Input	3.5mm AUX Audio Input
SWC Control	Accepts OEM SWC Interfaces
Audio Outputs	Front + Rear + Subwoofer, 2V
Video Output	RCA Composite, 500mV
Rear Camera	RCA Composite w/ +12V Trigger

Bluetooth

DVD

X300 WATT 4CH. AMPLIFIER

TOUCH SCREEN

AUX INPUT

USB

VDVD-165

1-DIN DVD Player w/ 32GB USB Playback

- Playback from DVDR/RW of MP4
- Playback from 32GB USB of MP4
- In-Dash, Floor, & Vertical Mounting Brackets Included
- DIN Size Trim Ring For In-Dash Mounting Included
- Flash Memory for Last Position Recall
- Remote Control & IR Repeater Included
- OSD On Screen Display
- Digital Anti-shock
- A/V Pre-amp Outputs, 2V
- Dimensions: 6.4" x 6.2" x 2"



DVD

USB

CD Playback - VCD-22B

Digital Media Playback - VM-22B

2-DIN CD or Digital Media Player, w/ USB/SD, AM/FM Receiver, & Bluetooth Connectivity



VCD-22B	
Chassis	ISO 2-Din, Sleeve Included
Bluetooth 3.0	Phone Calling + A2DP MP3 Streaming
Disc Playback	CD, CD-R, CD-RW: MP3, WMA
USB/SD Playback	64GB; WMA; MP3
AUX Input	3.5mm AUX Audio Input
Audio Outputs	Front + Rear + Subwoofer, 2V

VM-22B	
Chassis	ISO 2-Din, Sleeve Included
Bluetooth 3.0	Phone Calling + A2DP MP3 Streaming
USB/SD Playback	64GB; WMA; MP3
AUX Input	3.5mm AUX Audio Input
Audio Outputs	Front + Rear + Subwoofer, 2V

Bluetooth

USB

SD

RGB LED lighting system

AUX INPUT

X300 WATT 4CH. AMPLIFIER

CD Playback - VCD-21B

Digital Media Playback - VM-21B

1-DIN CD or Digital Media Player, w/ USB/SD, AM/FM Receiver, & Bluetooth Connectivity



VCD-21B	
Chassis	ISO 1-Din, Sleeve Included
Bluetooth 3.0	Phone Calling + A2DP MP3 Streaming
Disc Playback	CD, CD-R, CD-RW: MP3, WMA
USB/SD Playback	64GB; WMA; MP3
AUX Input	3.5mm AUX Audio Input
Audio Outputs	Front + Rear + Subwoofer, 2V

VM-21B	
Chassis	ISO 2-Din, Sleeve Included
Bluetooth 3.0	Phone Calling + A2DP MP3 Streaming
USB/SD Playback	64GB; WMA; MP3
AUX Input	3.5mm AUX Audio Input
Audio Outputs	Front + Rear + Subwoofer, 2V

Bluetooth

USB

SD

AUX INPUT

X300 WATT 4CH. AMPLIFIER



**VCM-103DAC** - Includes AirCast Wireless Streaming, Android MobileLink, & 2 Headphones  
**VCM-103DMH** - Includes Android MobileLink  
**VCM-103DM** - Standard Features  
Ceiling Mount DVD Entertainment System w/ 10.3" LCD



AirCast Wirelessly Streams Video From Your Smartphone Or Tablet To The Ceiling Monitor.

AirCast Is Compatible w/ Miracast, AirPlay, AllShareCast, DLNA, & Other Video Transfer Platforms via WiFi. (DAC only)

MobileLink Mirrors the Image of Your Smartphone Or Tablet To The Ceiling Monitor via MHL HDMI Interface Cable (sold separate). (DAC & DMH only)



Pair of 2ch. Wireless IR Headphones INCLUDED with VCM-103DAC







103 Series	VCM-103DAC	VCM-103DMH	VCM-103DM
AirCast	Yes	-	-
MobileLink	Requires HDM-A3	Requires HDM-A3	-
Headphones	2 Sets Dual Ch. IR	-	-

Standard Features & Specifications	
LCD Size/Type	10.3" 1,024 x 600 16:9 Aspect Ratio
Disc Playback	DVD, & 1,080P MP4
USB Playback	1,080P MP4 & AVI
FM Transmitter	330 Channel
IR Transmitter	Single Channel 2.3MHz
Audio Outputs	Stereo Audio RCA, 2V, top panel
Video Output	RCA Composite, 500mV, top panel
A/V Input	RCA Composite & Stereo Audio, side panel
Color Skins	Beige, Grey, & Black Included
Size/Footprint	13"w x 11"d x 2.5"h

**VCM-143DMH**  
Ceiling Mount DVD Entertainment System w/ MobileLink Smartphone Mirroring\* & 14.3" LCD  
\*(requires MHL HDMI Interface Cable, sold separate)



MobileLink Mirrors the Image of Your Smartphone Or Tablet To The Ceiling Monitor via MHL HDMI Interface Cable (sold separate).

VCM-143DMH	
LCD Size/Type	14.3" 1,366 x 768, 16:9 Aspect Ratio
Disc Playback	DVD, & 1,080P MP4
USB/SD Playback	1,080P MP4
FM Transmitter	8 Channel
IR Transmitter	Single Channel 2.3MHz
Audio Outputs	Stereo Audio RCA, 2V, top panel
Video Output	RCA Composite, 500mV, top panel
A/V Input	RCA Composite & Stereo Audio, top panel
Color Skins	Beige, Grey, & Black Included
Dome Light	Bright White LED, Trigger or Manual
Size/Footprint	16"w x 7.5"d x 2"h





**VCM-138H**  
Ceiling Mount DVD Entertainment System w/ MobileLink Smartphone Mirroring\* & 13.8" LCD  
\*(requires MHL HDMI Interface Cable, sold separate)



VCM-138H	
LCD Size/Type	Swiveling 13.8", 1,366 x 768, 16:9 Ratio
Disc Playback	DVD, & 1,080P MP4
USB/SD Playback	1,080P MP4
FM Transmitter	8 Channel
IR Transmitter	Dual Channel 2.3/3.8MHz
Audio Outputs	Stereo Audio RCA, 2V
Video Output	RCA Composite, 500mV
A/V Input	RCA Composite & Stereo Audio
AUX A/V Input	3.5mm, Side Panel
Color Skins	Beige, Grey, & Black Included
Dome Light	Bright White LED, Trigger or Manual
Size/Footprint	16.5"w x 13.25"d x 2.25"h









**VHD-90CC** - Includes DVD Player w/ 9" LCD Screen  
**VHD-70CC** - Includes DVD Player w/ 7" LCD Screen  
Universal Replacement Headrest w/ DVD Player & LCD Screen

**VH-90CC** - 9" LCD Screen  
**VH-70CC** - 7" LCD Screen



DVD

USB

IR Transmitter

A/V INPUT

SD

FM Transmitter



Beige, Grey, & Black Colors INCLUDED!!!

	VHD-90CC VHD-70CC	VH-90CC VH-70CC
DVD	Yes	-
USB/SD	Yes	-
Standard Features & Specifications		
LCD Size/Type	800x480 16: 9 Aspect Ratio	
Disc Playback	720P MP4 & AVI	-
USB Playback	720P MP4 & AVI, 32GB	-
FM Transmitter	330 Channel	-
IR Transmitter	Dual Channel, 2.3/3.8MHz	
Audio Outputs	Stereo Audio RCA, 2V	-
Video Output	RCA Composite, 500mV	-
A/V Input	RCA Composite & Stereo Audio	
Color Skins	Beige, Grey, & Black Included	
Pole Diameter	3/8" Diameter, 1/2" & 9/16" Adapters	
Pole Width	Adjustable 4.75" - 8.25"	
Size (W x H x D)	90CC 11.5" x 8.5" x 6"	70CC 10" x 7" x 5.5"

**SHAD-9H**  
Universal Headrest Bracket Mount DVD Player w/9"  
LCD & Android MobileLink Smartphone Mirroring



Beige, Grey, & Black  
Colors INCLUDED!!!

ANDROIDMobile  
LINK  
Screen Mirroring of Smart Devices

USB

IR Transmitter

DVD

SD

FM Transmitter

SHAD-9H	
LCD Size/Type	9" 800x480 16:9, Swivel
Disc Playback	720P MP4 & AVI
USB Playback	720P MP4 & AVI, 32GB
FM Transmitter	330 Channel
IR Transmitter	Dual Channel, 2.3/3.8MHz
Audio Outputs	Stereo Audio RCA, 2V, top panel
Video Output	RCA Composite, 500mV
A/V Input	RCA Composite & Stereo Audio
Pole Diameter	3/8" Diameter, 1/2" & 9/16" Adapters
Pole Width	3.75" - 8.25" Width
Size (W x H x D)	10.5" x 8" x 5.5"



**VHR-72IRA**  
7" Custom Install Headrest Monitor

A/V INPUT

IR Transmitter

Two Auxiliary A/V Input  
Dual Channel IR Transmitter  
Wired Headphone Output  
Low Reflection TFT-LCD Monitor  
Ultra Bright LED Backlighting  
Selectable Aspect Modes  
Preset/Manual Image Control  
Remote Control Included  
NTSC/PAL Selection  
480 x 234 (16:9) Resolution  
Cutout: 7"w x 4.75"h x .75"d

Wireless Headphones

Single 1ch. IR Wireless Headphone - **VHP-11**

Single 2ch. IR Wireless Headphone - **VHP-12**

Pair 1ch. IR Wireless Headphones w/ Transmitter - **VHP-22**



VHP-11  
VHP-12



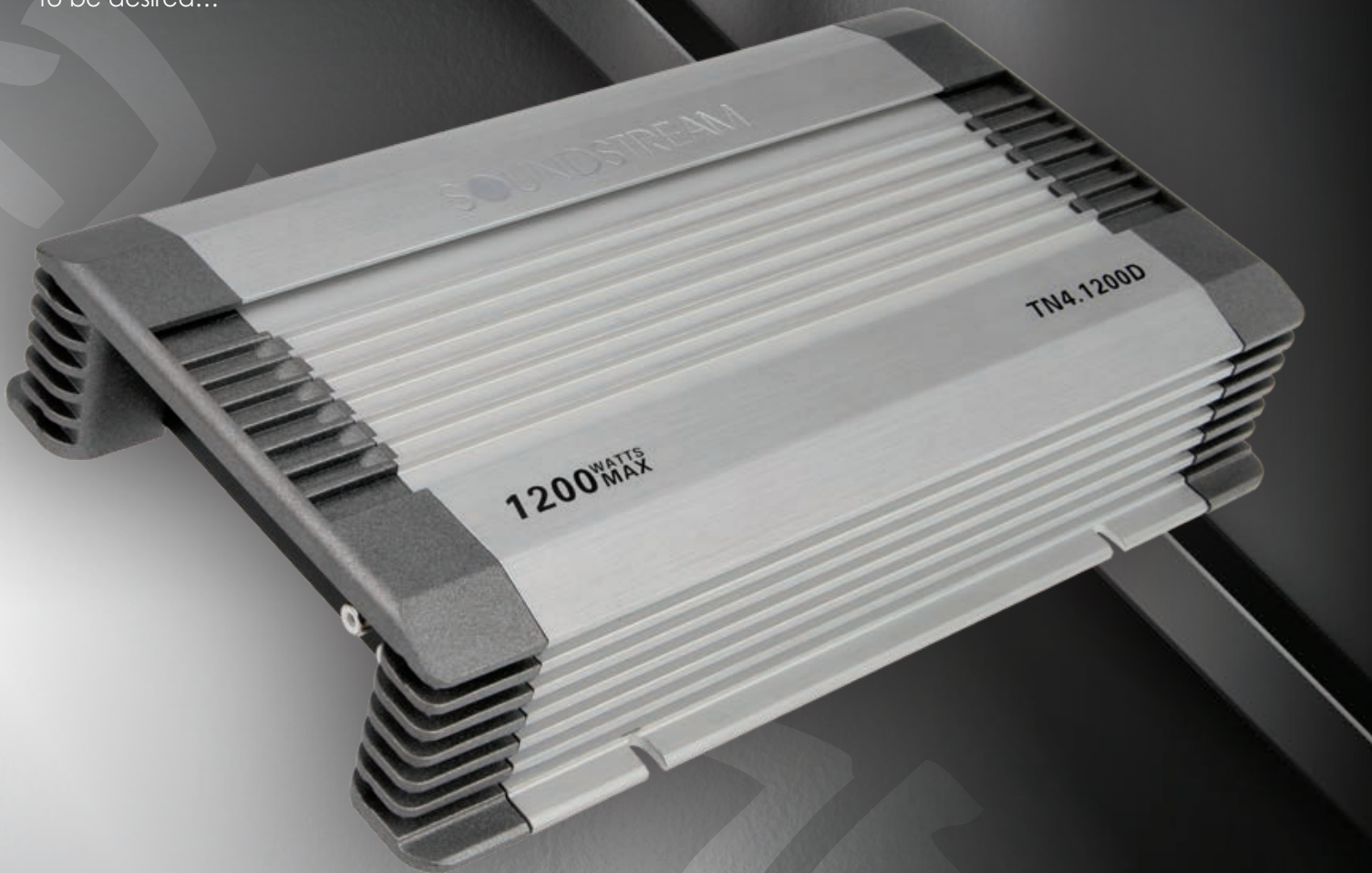
VHP-22

External IR Transmitter Included (VHP-22)  
Adjustable Headphone Straps for Comfort Fit  
Ear Pads Fold Flat for Seat Pocket Storage  
EVA hard Carry Case Included  
MP-3 Player Input Via 3.5mm Jack  
On/Off Switch Saves Battery Life  
Auto Power Off Function  
Auto Mute Function  
Variable Volume Control  
ALC Auto Level Control



# Tarantula AMPLIFIERS Nano

We're in a time where small is "in". Smaller, more economical vehicles are more and more desirable. But that doesn't mean you have to sacrifice big power for your system. The new Tarantula NANO amplifiers pack huge amounts of power into small chassis thanks to efficient Full-Range Class D topology and SMT technology. Complimented with every possible preamp adjustment, the NANO amplifiers leave nothing to be desired...



Class D Full Range SMT Circuitry  
Double Sided Composite Epoxy PCB  
2-Ohm Stereo, 4-Ohm Bridged Multi-Channel  
1-Ohm Stable Class D Monoblock  
Three-Way Protection Circuitry  
Delayed On/Off Circuit  
Variable 12dB High, Low, & Subsonic Crossovers  
Variable 18dB 50Hz Bass Boost (1ch.)  
Dash Mounted Remote Gain Control (1 ch.)  
4g Power Terminals & 12g Speaker Terminals

TARANTULA NANO	TN4.1200D	TN1.2000D	TN1.3000D
Max Power	1,200w	2,000w	3,000w
RMS Power 4Ω	100 x 4	450 x 1	650 x 1
RMS Power 2Ω	150 x 4	800 x 1	1,000 x 1
RMS Power 4Ω Bridged	300 x 2	1,000 x 1 (1Ω)	1,500 x 1 (1Ω)
Remote Gain Control	-	Included	Included
Dimensions (7.25"w x 2.25"h)	11.75"	12.75"	15.75"

# Tarantula Electro

Tarantula amplifiers continue to dominate the Soundstream amplifier arsenal. For the newest generation, we've maintained their stable performance, but given them a unique appearance. Each Tarantula Electro amplifier features a 12-point RGB LED lighting system, containing its own independent RGB control. A simple press of the end panel mounted switch changes the color to one of several presets, slow-motion color change, or rapid flashing random color. For more custom installs, a single color can be selected during slow-motion color change. Tarantula Electro models include 4ch, 1-ohm stable class D 5ch & monoblocks, and an additional .5-ohm stable 3,000w monoblock.



2-ohm Stereo & 4-ohm Bridged Full Range Operation  
1-ohm Minimum Impedance Monoblock Operation  
Bridge 2 Monoblocks Together for Double Power!  
Multi-color RGB LED Illumination Accent Lighting  
Solid Color, Flashing, Random, or Slow-Motion Color Change  
MOSFET Power Supply w/ Audiophile Grade IR™ Transistors  
Military Grade SMT PCB Maintains Dynamic Performance  
Direct Short, Thermal, & Overload Circuits Protect Amplifier  
200mV-6V High Level or Low Level RCA Input & Output  
Variable 12dB High Pass, Low Pass, & Subsonic Crossovers  
12dB Bass Boost Increases Low Octave Harmonics (monoblock)  
180° Phase Shift Improves Low Octave Dynamics (monoblock)  
Dash Mount Gain Control Module Included (select models)

TARANTULA ELECTRO	T4.1500L	T5.2500DL	T1.4000DL	T1.6000DL
Max Power	1,500w	2,500w	4,000w	6,000w
RMS Power 4Ω	120 x 4	75 x 4 + 325 x 1	700 x 1	800 x 1
RMS Power 2Ω	180 x 4	125 x 4 + 500 x 1	1,300w	1,400 x 1
RMS Power 4Ω Bridged	360 x 2	250 x 2 + 750 x 1 (1Ω)	-	2,500 x 1 (1Ω)
RMS Power 1Ω Bridged	-	-	2,000w	3,000 x 1 (.5Ω)
Remote Gain Control	-	-	Included	Included
Dimensions (9"w x 2.50"H)	16.00"	17.25"	18.00"	20.50"



# Rubicon NANO AMPLIFIERS

Rubicon Nano amplifiers adopt the optimum class D performance, reliability, and footprint of the Picasso Nano platform. At first glance, you'll notice several key improvements. Rubicon Nano's signal inputs, power/ground, and speaker connections are all re-located to the leading edge of the chassis, for an easier, more appealing install. All pre-amp & crossover options are conveniently located on the top surface, making adjustment after installation possible. What you might not notice are additions to the circuit board, including increased power supply & output stage components, & monoblock bridging capability. Available Rubicon Nano models include a 4ch, 5ch, & class D monoblocks up to 2,500 watts.



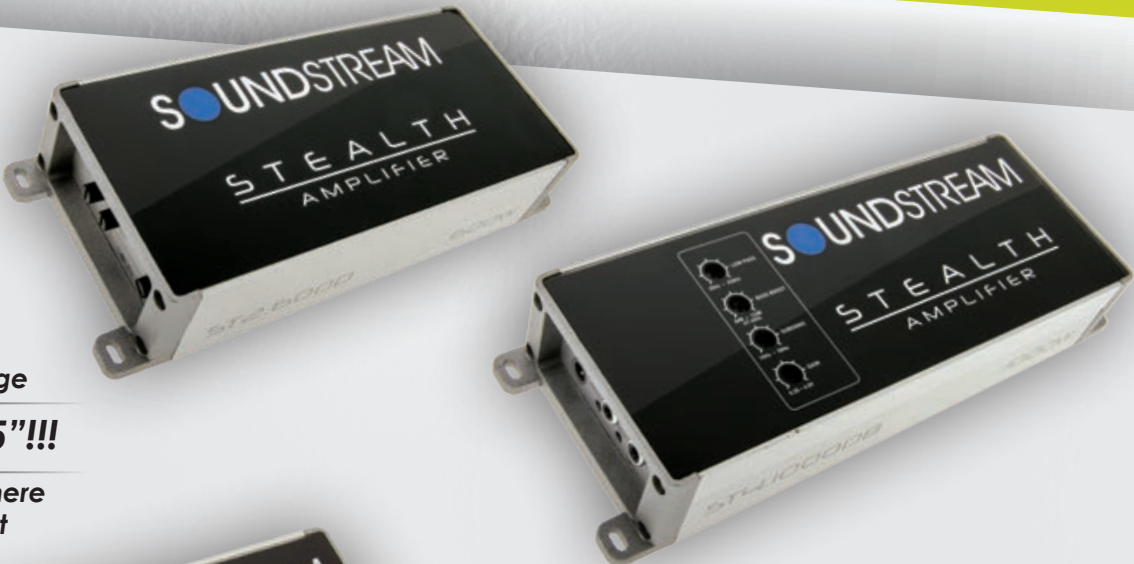
High Efficiency Class D Full Range & Monoblock Amplifiers  
Hybrid Aluminum Alloy Heatsink for Optimum Dissipation  
2-ohm Stereo & 4-ohm Bridged Class D Full Range  
1-ohm Minimum Impedance Monoblock Operation  
Monoblock Bridging Capability for Double Amplifier Application  
MOSFET Power Supply w/ Audiophile Grade IR™ Transistors  
Military Grade SMT PCB Maintains Dynamic Performance  
Direct Short, Thermal, & Overload Circuits Protect Amplifier  
200mV-6V Low Level RCA or High Level Signal Input  
Quick Disconnect High Level Wire Harness Included  
Easy DIY Install Single Sided Terminals & Controls  
4g Power Input Terminals & 12g Speaker Output Terminals  
Variable 12dB High Pass, Low Pass, & Subsonic Crossovers  
12dB Bass Boost Increases Low Octave Harmonics  
Dash Mount Gain Control Module Included (monoblocks)

Rubicon Nano	RN4.1400D	RN5.2000D	RN1.3000D	RN1.5000D
Max Power	1,400w	2,000w	3,000w	5,000w
RMS Power 4Ω	125 x 4	75 x 4 + 300 x 1	600 x 1	1,000 x 1
RMS Power 2Ω	175 x 4	125 x 4 + 500 x 1	900 x 1	1,500 x 1
RMS Power 4Ω Bridged	350 x 2	250 x 2 + 500 x 1 (2Ω)	1,500 x 1 (1Ω)	2,500 x 1 (1Ω)
Remote Gain Control	-	Included	Included	Included
Dimensions: (6.50" w x 1.50"h)	9.00"	11.75"	10.25"	13.75"

# STEALTH AMPLIFIERS

Don't let these little monsters fool you. The latest and greatest of class D full range technology allows us to pack 10 lbs of KICK YOUR ASS in a 2-lb chassis. Once regarded as "dirty power", class Ds stable performance, thanks to high power capability, maximum efficiencies, and low tolerance components, rivals traditional full range applications. Minimal power requirements, ultra micro footprint, unbelievable sound quality, and easy install make Stealth amplifiers great for any car, motorcycle, boat, or off-road vehicle...

Stealth series amplifiers include a 500w 4ch model with built-in Bluetooth 4.0. Seamlessly connect your cell phone or other enabled smart device for continuous audio playback at your fingertips. A great addition to off-road vehicles, motorcycles, or personal watercraft missing a source unit.



95%+ Efficient  
Class D Full Range

Only 3" x 1.5"!!!

Install-Me-Anywhere  
Micro Footprint



High Efficiency Class D Full Range & Monoblock Amplifiers  
Hybrid Aluminum Alloy Heatsink for Optimum Dissipation  
2-ohm Stereo & 4-ohm Bridged Full Range Operation  
2-ohm Minimum Impedance Monoblock Operation  
Built-in Bluetooth V4.0 for Wireless Mobile Device Playback\*  
MOSFET Power Supply w/ Audiophile Grade IR™ Transistors  
Military Grade SMT PCB Maintains Dynamic Performance  
Direct Short, Thermal, & Overload Circuits Protect Amplifier  
200mV-12V High Level or Low Level RCA Input  
Quick Disconnect RCA/High Level Wire Harness  
Quick Disconnect Power and Speaker Output Harness  
Variable 12dB High Pass, Low Pass, & Subsonic Crossovers  
12dB Bass Boost Increases Low Octave Harmonics (ST1)  
Dash Mount Gain Control Module Included (ST1)

NEW FOR  
2018

NEW FOR  
2018



NEW FOR  
2018

NEW FOR  
2018

Stealth Amplifiers	ST2.1000D	ST3.1000D	ST4.1000D	ST4.1000DB	ST4.1200D	ST1.700D	ST1.1000D
MAX Power	1,000w	1,000w	1,000w	1,000w	1,200w	700w	1,000w
RMS Power 4Ω	140 x 2	65 x 2 + 1 x 200	90 x 4	90 x 4	100 x 4	250 x 1	350 x 1
RMS Power 2Ω	250 x 2	100 x 2 + 1 x 300	125 x 4	125 x 4	150 x 4	350 x 1	500 x 1
RMS Power 4Ω Bridged	500 x 1	200 x 1 + 1 x 300	250 x 2	250 x 2	300 x 2	-	-
Remote Gain Control	Included	Included	-	-	-	Included	Included
Dimensions (3"w x 1.5"h)	6.50"	7.75"	6.50"	7.75"	7.75"	6.50"	7.75"



# Picasso Nano AMPLIFIERS

Cars come in all different shapes, most in the same size; compact. So, we've engineered these mini Picassos to fit in virtually any location in your ride. Other sport compact amplifiers use bizarre technologies with pseudo power supplies. Picasso Nanos use tried and tested MOSFET power supplies & tenacious Class D circuitry.



Small Compact 4.75" Wide Chassis  
4-ohm Bridged/2-ohm Stereo Class D Full Range  
2-ohm Stable Class D Monoblocks  
1-Ohm Stable Class D Monoblock Available  
MOSFET PWM Power Supply  
80Hz 12dB HP or LP Crossover (2/4 ch.)  
50-250Hz Variable 12dB LP Crossover (mono)  
10-50Hz Variable 12dB Subsonic Crossover (mono)  
12dB 45Hz Bass Boost (mono)  
200mv-6V Low Level Input Sensitivity  
High Level Input  
Dash Mount Remote Gain Control

PICASSO NANO	PN2.350D	PN4.520D	PN4.1000D	PN5.640D	PN1.650D	PN1.1000D
MAX Power	700w	1,040w	2,000w	1,280w	1,300w	2,000w
RMS Power 4Ω	115 x 2	100 x 4	140 x 4	60 x 4 + 200 x 1	400 x 1	350 x 1
RMS Power 2Ω	175 x 2	130 x 4	250 x 4	80 x 4 + 350 x 1	650 x 1	600 x 1
RMS Power 4Ω Bridged	350 x 1	260 x 2	500 x 2	160 x 2 + 350 x 1	-	1,000 x 1 (1Ω)
Remote Gain Control	-	-	-	Included	Included	Included
Dimensions (4.75"w x 1.5"h)	5.50"	9.25"	10.25"	10.25"	9.25"	10.25"



# ARACHNID AMPLIFIERS

Arachnid amplifiers are the next step in performance and value. Taking advantage of our tried and true class A/B full range and improved efficiency class d monoblock platforms, Arachnid amplifiers continue down the road of reliability and longevity you know well.



ARACHNID AMPLIFIERS	AR4.1200	AR4.1800	AR1.2500D	AR1.4500D	AR1.8000D
MAX Power	1,200w	1,800w	2,500w	4,500w	8,000w
RMS Power 4Ω	120 x 4	180 x 4	500 x 1	900 x 1	1,500 x 1
RMS Power 2Ω	150 x 2	225 x 4	850 x 1	1,500 x 1	2,500 x 1
RMS Power 4Ω Bridged	300 x 2	450 x 2	1,250 x 1 (1Ω)	2,200 x 1 (1Ω)	4,000 x 1 (1Ω)
Remote Gain Control	-	-	Included	Included	Included
Dimensions (8.50"w x 2"h)	13.50"	15.75"	12.75"	13.75"	18.50"



# Bass Processors

## BX-23Q

Digital Bass Reconstruction Processor w/  
3-Band Bass Equalizer & LED Lighting

Digital Reconstruction Processor Adds Impact to  
Music w/ Insufficient Lower Octave Levels

3-Band Bass Equalizer Enhances Dynamic Control  
of Subwoofer Response; 50Hz, 125Hz, 315Hz

Dash Mount Remote Control w/ Subwoofer Level  
Control & Variable 35Hz-80Hz Subsonic Crossover

Variable 27Hz-63Hz Frequency Sweep & Variable  
Center Frequency Q/Width

13V MAX 2-Ch./Stereo Low Level RCA Output  
& 2-Ch./Stereo Low-Level RCA Input

Automatic Color Changing or Selectable Single  
Color LED Illuminated Spider Logo

## BX-20Z

Digital Bass Reconstruction Processor

Max Bass Control  
Dash Mount Remote Control  
PFM Subsonic Filter & Bass Level Control  
Illuminated logo and knobs  
Chrome Logo Plate  
Bass Restoration Lighted Display  
Parametric Bass Control  
PFM Subsonic Filter  
Balanced Inputs  
Bass Output Control  
PWM High Head Room Power Supply  
Output Level: 13.5 volt  
Frequency Response: 10Hz 100KHz  
THD: 0.002%  
S/N Ratio: 132dB  
Balanced Input Noise Rejection: 60 dB

## BX-15

Digital Bass Reconstruction Processor

Max Bass Control  
PWM High Head Room Power Supply  
Balanced Input Noise Rejection: 60 dB  
Frequency Response: 10Hz 100KHz  
Dash Mount Remote Control  
PFM Subsonic Filter & Bass Level Control  
Illuminated logo and knobs  
Brushed Aluminum Case & Handles  
Bass Restoration Lighted Display  
Parametric Bass Control  
PFM Subsonic Filter  
Balanced Inputs  
Bass Output Control  
Output Level: 13.5 volt  
THD: 0.002%  
S/N Ratio: 132dB

NEW FOR  
2018



# Bass Processors

## BX-12 (black)

## BX-12W (white)

Digital Bass Reconstruction Processor

Max Bass Control  
PWM High Head Room Power Supply  
Frequency Response: 10Hz 100KHz  
Dash Mount Remote Control  
Bass Restoration Lighted Display  
Parametric Bass Control  
PFM Subsonic Filter  
Balanced Inputs  
Bass Output Control  
Output Level: 13.5 volt  
THD: 0.003%  
S/N Ratio: 130dB  
Balanced Input Noise Rejection: 60 dB

## BX-10X

## BX-10 (black)

## BX-10W (white)

Digital Bass Reconstruction Processor

Max Bass Control  
PWM High Head Room Power Supply  
Frequency Response: 10Hz 100KHz  
Dash Mount Remote Control  
Bass Restoration Lighted Display  
Parametric Bass Control  
PFM Subsonic Filter  
Balanced Inputs  
Bass Output Control  
Output Level: 13.5 volt  
THD: 0.003%  
S/N Ratio: 130dB  
Balanced Input Noise Rejection: 60 dB

## PROX4.1

4-way Electronic Crossover Optimized for Extreme SPL Applications

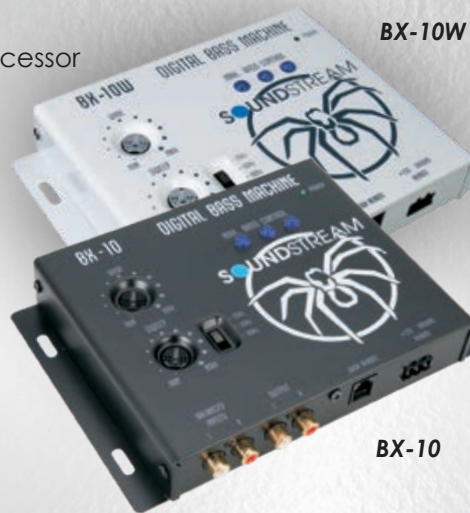
Signal Input/Output Options:  
2Ch. RCA Front/Full Range Stereo or Optional Mixed Mono Input  
Optional 180° Phase Inversion Switch for Front/Full Range Input  
Optional 2Ch. RCA or Front/Full Range Input for Low/Subwoofer Input  
2Ch. RCA Full Range Output w/ Mute Switch & Variable 9V Line Driver  
2Ch. RCA Output for Low/Sub, Mid-Low, Mid-High, & High/Tweeter  
Variable 9V MAX Output Line Driver for All Low, Mid, & Sub Channels  
Dedicated Momentary Mute Switch for All Low, Mid, & Sub Channels

High/Tweeter Signal Processing Options:  
Variable 1kHz-10kHz High-Pass Crossover

Mid-High Signal Processing Options:  
Variable 12dB 550Hz-3kHz High-Pass & 4kHz-20kHz Low-Pass Crossover

Mid-Low Signal Processing Options:  
Variable 12dB 50Hz-400Hz High-Pass & 30Hz-5kHz Low-Pass Crossover

Low/Subwoofer Signal Processing Options:  
Optional 3-stage 24dB Subsonic Filter  
Variable 50Hz-350Hz 12dB Low-Pass Crossover  
Dedicated 180° Phase Inversion Switch  
Variable 0-12dB 45Hz Bass Boost



NEW FOR  
2018



# Equalizers

## MPQ-90

1/2 DIN **9-Band** Graphic EQ w/ Subwoofer Level Control

30V Bipolar Switching Power Supply  
20dB Headroom Eliminated Signal Overload  
Selectable Stereo RCA Inputs, Main or AUX  
Front, Rear, & Subwoofer RCA Outputs  
Master Volume/Level Control  
Independent Subwoofer Level Control  
Independent Fade Control  
Variable 60Hz-90Hz Subwoofer Low Pass Crossover  
Nine Frequency Bands with 18db Boost/Cut:  
50Hz, 120Hz, 250Hz, 500Hz, 1kHz, 2kHz, 4kHz, 8kHz, 16kHz  
Blue Backlit Control Knobs  
S/N Ratio: 115dB  
THD: 0.05%  
Stereo Separation: 82dB  
Frequency Response: 10Hz-15kHz  
Max Output Voltage: 8V

NEW FOR  
**2018**



## MPQ-7B

1/2 DIN **7-Band** Graphic EQ w/ Subwoofer Level Control

30V Bipolar Switching Power Supply  
20dB Headroom Eliminated Signal Overload  
2 Selectable Balanced RCA Inputs w/ Input gain  
Front, Rear, & Subwoofer RCA Outputs  
Seven Frequency Bands with +/- 18db Boost/Cut  
40Hz, 100Hz, 275Hz, 700Hz, 2kHz, 5kHz, 14kHz  
Independent Subwoofer Level Control  
Selectable Low-Pass Filter: 32Hz, 64Hz, 125Hz  
Input Selector Switch  
Fade Control  
Blue Backlit Control Knobs  
S/N Ratio: 115dB  
THD: 0.05%  
Stereo Separation: 82dB  
Frequency Response: 10Hz-15kHz  
Max Output Voltage: 8V



## MPQ-7XO

1/2 DIN **Dual Channel Multi-Band** Graphic EQ

20dB Headroom Switching Power Supply  
Built-in Low Noise Bi-FET Op-Amps  
2 Selectable Balanced RCA Inputs w/ Input Gain  
Front, Rear, & Subwoofer RCA Outputs  
Four 18dB Front Bands 125Hz; 500Hz; 3.5kHz; 12kHz  
Three 18dB Rear Bands 50Hz; 600Hz; 6.3kHz  
Variable 18dB Bass Boost; 20-70Hz  
Independent Subwoofer Level Control  
Selectable Subsonic Filter: 32Hz; 64Hz; 125Hz  
Fade Control  
Blue Backlit Control Knobs  
Frequency Response: 10-100kHz  
Output Signal Voltage Up To 8V  
THD: .05%  
Signal-to-Noise Ratio: 115dB  
7"w x 4.25"d x 1.125"h



# Amplifier Installation

## Complete D.I.Y. Installation Kits

### WKIT-0

0AWG Installation Kit w/ 200A ANL Fuse

### WKIT-4

4AWG Installation Kit w/ 120A MANL Fuse

### WKIT-8

8AWG Installation Kit w/ 80A MANL Fuse

### All Premium Kits Include:

17ft 18AWG Power Wire  
3ft 18AWG Ground Wire  
25ft Speaker Wire  
17ft Twisted Pair RCA Interconnect  
17ft Remote Turn-on Wire  
MANL or ANL Fuse Holder w/ Fuse  
Complete Installation Accessories



### WK-00X

0G Installation Kit w/ 200A ANL Fuse

### WK-40X

4G Installation Kit w/ 100A MANL Fuse

### WK-80X

8G Installation Kit w/ 100A MANL Fuse

### All Standard Kits Include:

17ft Power Wire  
3ft Ground Wire  
25ft Speaker Wire  
17ft Twisted Pair RCA Interconnect  
17ft Remote Turn-on Wire  
MANL or ANL Fuse Holder w/ Fuse  
Complete Installation Accessories



NEW FOR  
**2018**

## Power Capacitors

### SCX-1.5

1.5 Farad Power Capacitor

12-16 DC Input Voltage  
Red LED Voltage Meter  
Bolt Post for Ring Terminal



### SCX-4

4 Farad Power Capacitor

12-16 DC Input Voltage  
Blue LED Voltage Display  
Chrome Plated Chassis  
Bolt Post for Ring Terminal





# Tarantula

## SUBWOOFERS

In recent years, Tarantula subwoofers have evolved to meet various performance and placement goals, keeping your, the Soundstream fanatic, suggestions in mind. However, more often than not, we hear your calls to bring back a legend. For this next generation, we made a few changes and several improvements.

Improvements include direct connect wire leads, over saturated 12mm top plate and t-yoke, & double-stitched cone to high density poly-ether foam surround for improved sound quality. Key components that you expect from T5 still remain; big ass 1,000w 3" voice coil, tripple-stack magnet structure, high density Spruce pulp sub-cone, and the iconic black-on-black Soundstream spider.



Overcompensating Motor Structure for Increased Magnetic Strength  
12mm T-Yoke & Top Plate Improve Low Frequency Dynamics  
Vented T-Yoke & Frame Reduces Voice Coil Heat Build-up  
Non-Magnetic Non-Resonate Die-Cast Aluminum Frame  
3" 4-Layer Voice Coil w/ Direct Connect Wire Increases Power Handling  
High-Temperature Tolerance Adhesives Resist Thermal Failure

Non-Transfer Spruce Pulp Cone w/ UV & Chemical Protection  
Stitched and Glued Surround/Cone Joints for Strongest Bonding  
Extended Excursion Poly-ether Foam Surround w/ UV & Chemical Protection  
Dual Poly-Cotton Suspension Dampen Violent Accelerations  
1-pc Gasket/Trim Ring w/ Concealed Mounting Holes Included

TARANTULA T5	T5.102	T5.104	T5.122	T5.124	T5.152	T5.154
MAX Power (watts)	1,800w		2,000w		2,600w	
RMS Power (watts)	900w		1,000w		1,300w	
Efficiency (1w/1m dB)	83.5dB		86dB		88dB	
Voice Coil Configuration	3" DVC 2Ω	3" DVC 4Ω	3" DVC 2Ω	3" DVC 4Ω	3" DVC 2Ω	3" DVC 4Ω
Mounting Depth	6.25"		7.25"		9.25"	
Optimum Sealed Box	0.75ft³		1.50ft³		2.00ft³	
Optimum Ported Box	1.25ft³		2.50ft³		4.00ft³	



# REFERENCE

## SUBWOOFERS

In today's world, where styling and sex appeal often guide your buying decisions, performance is often compromised or even lost in favor of cosmetic treatment. At Soundstream, you, our customers expect more for your hard earned dollars. Not only do you want products with outstanding cosmetic styling, you EXPECT performance.

The highest performance that you have come to know and love from products bearing the Soundstream brand. You expect our products to be the pinnacle, the reference, which raises the bar and sets a new standard of outstanding performance coupled with edgy, aggressive cosmetic design. Why just settle for pretty face or an ugly sister. Soundstream Reference series subwoofers answer the call.



REFERENCE R1	R.122	R.124
MAX Power (watts)		2,000w
RMS Power (watts)		1,000w
Efficiency (1w/1m)		85.00dB
Voice Coil Configuration	2.50" DVC 2Ω	2.50" DVC 4Ω
Mounting Depth		7.00"
Optimum Sealed ft³		1.00ft³
Optimum Ported ft³		2.00ft³

Third Generation Soundstream Reference Frame  
Oversaturated Motor Structure for Increased Magnetic Strength  
12mm Vented T-Yoke & Top Plate Improve Low Frequency Dynamics  
317oz Double Stack Magnet, T-Yoke & Top Plate  
2.5" 4-Layer Voice Coil w/ Large Gauge Wire Increases Power Handling  
High-Temperature Tolerance Adhesives Resist Thermal Failure  
Inverted Roll Polyether Foam Surround w/ UV & Chemical Protection

Oversized Concave IMPP Primary Cone Increases Effective Surface Area  
Non-Transfer Spruce Pulp Cone w/ UV & Chemical Protection  
Acoustic Canceling Polyvinyl Chloride Gasket & Trim Ring  
Nickel Plated 12ga Spring-Loaded Compression Wire Terminals  
Stitched Voice Coil Leads Prevent Potential Damage  
Dual Poly-Cotton Suspension Dampen Violent Accelerations





REFERENCE SUBWOOFERS



Picasso  
SHALLOW SUBWOOFERS

Picasso shallow subwoofers combine performance and value. These shallow subwoofers perform best in small sealed enclosures, with minimal power requirements, thanks to efficiencies in cone and suspension design.



PICASSO SUBWOOFERS	PSW.104	PSW.124
MAX Power (watts)	500w	600w
RMS Power (watts)	250w	300w
Efficiency (1w/1m)	86.40dB	88.41dB
Voice Coil Configuration	2" SVC 4Ω	
Mounting Depth	3.00"	3.50"
Optimum Sealed ft <sup>3</sup>	0.75ft <sup>3</sup>	1.00ft <sup>3</sup>

**Woven Fiberglass Composite Cone**  
All Reference R3 woofers use fiberglass stranding woven together for ultimate strength and less elasticity. A heavy soaking in epoxy combined with the sonic qualities of pulp paper backing proves itself worthy of any system.

**Extended Excursion Polyurethane Surround**  
Polyurethane is a foam compound used in the manufacture of countless gasket and insulation products, known for its adhesive bonding properties. Reference R3 woofers utilize an extended excursion polyurethane surround for it's strength and flexible properties during extreme movement.

**100% OFC 4-Layer Voice Coil**  
R3 woofers use generous 1.50" long, 2.5" diameter 100% OFC Copper voice coils. A vented Aluminum former extracts and dissipates any heat build-up, resulting in improved power handling.

**Back Plate & T-Yoke Venting**  
Heat build-up is a leading cause of catastrophic woofer failure. Venting built into the T-Yoke, back plate, and voice coil extract and dissipate heat, ensuring R3 woofers keep their cool.

REFERENCE R3	R3.8	R3.10	R3.12
MAX Power (watts)	1,000w	1,400w	1,600w
RMS Power (watts)	500w	700w	800w
Efficiency (1w/1m)	80.70dB	82.10dB	84.66dB
Voice Coil Configuration	2.00" DVC 2Ω	2.5" DVC 2Ω	2.5" DVC 2Ω
Mounting Depth	5.25"	6.00"	6.875"
Optimum Sealed ft <sup>3</sup>	0.75ft <sup>3</sup>	1.00ft <sup>3</sup>	1.50ft <sup>3</sup>
Optimum Ported ft <sup>3</sup>	1.25ft <sup>3</sup>	1.50ft <sup>3</sup>	2.25ft <sup>3</sup>

**PSB.10A** Powered Enclosure w/ PSW-10  
15h x 21.75"L x 5" (d1) 7" (d2)

**PSB-12A** Powered Enclosure w/ PSW-12  
15.25"h x 24"L x 5.25" (d1) 7.25" (d2)

Complimenting the Picasso shallow family, these powered enclosures take away all the hard work of amplifier and sub box installation. The available 10" and 12" models include a 300w amplifier built-in, with crossovers and bass boost for optimum tuning.

**USB-8A**  
8" Pre-loaded Under Seat Enclosure

150w Amplifier Built-in  
200mV-3V Input Sensitivity  
Variable 12dB 50-150Hz LP Crossover  
Variable 12dB 45Hz Bass Boost  
1800 Phase Switch  
>95dB Signal-to-Noise Ratio  
0.05% Total Harmonic Distortion  
Remote Gain Control Included  
Dimensions: 3"h x 9.5"w x 14.5L





# Picasso Components

Improved Efficiency Diaphragm & Magnet Structure  
Carbon Fiber Injection Molded Polypropylene Cone  
Treated Woven Cloth Surround  
Phase Plug Improved Dynamic Response  
1" Voice Coil on Aluminum Former  
4-ohm System Impedance  
Quick Disconnect Terminals  
1" Pivoting Soft Dome Tweeter  
Flush or Surface Mounting  
Passive Crossover Included  
Freq-Response: 70-20kHz



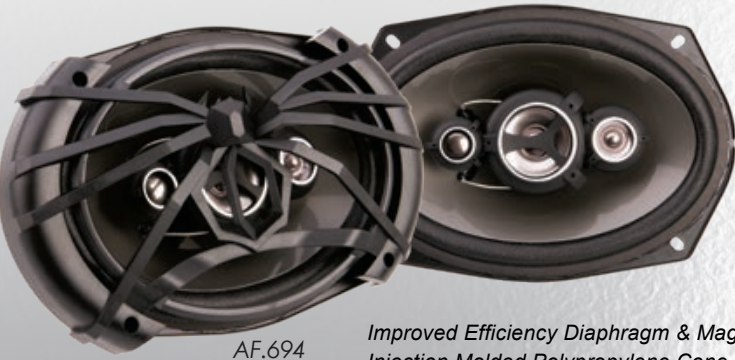
PF.6	
Size & Type	6.5" 2-way
MAX Power (watts)	350
RMS Power (watts)	120
System Efficiency	93dB
Top Mount Depth	2.5"

# ARACHNID Speakers

Improved Efficiency Diaphragm & Magnet Structure  
Injection Molded Polypropylene Cone  
Treated Woven Cloth Surround  
Phase Plug Improved Dynamic Response  
1" Voice Coil on Aluminum Former  
4-ohm System Impedance  
Quick Disconnect Terminals  
1" Pivoting Balanced Dome Tweeter  
Flush or Surface Mounting  
Passive Crossover Included  
Freq-Response: 70-20kHz



AC.6	
Size & Type	6.5" 2-way
MAX Power (watts)	300
RMS Power (watts)	100
System Efficiency	92dB
Top Mount Depth	2.50"



AF.694

Improved Efficiency Diaphragm & Magnet Structure  
Injection Molded Polypropylene Cone  
Treated Woven Cloth Surround  
1" Voice Coil on Aluminum Former  
4-ohm System Impedance  
Quick Disconnect Terminals  
2" Balanced Dome Mylar Midrange (694)  
1" Balanced Dome Mylar Tweeter



AF.653

AF.42

AF.573

ARACHNID SPEAKERS	AF.694	AF.653	AF.573	AF.52	AF.42
Size and Configuration	6"x9" 4-way	6.5" 3-way	5"x7" 3-way	5.25" 2-way	4" 2-way
MAX Power (watts)	500	300	350	250	200
RMS Power (watts)	170	100	120	80	70
Efficiency (1w/1m dB)	93.00	92.00	92.00	90.00	90.00
Mounting Depth	3.25"	1.75"	2.625"	2.25"	1.75"



AF.52

# Tweeters

## TWS.1 1" Soft Dome Tweeter

Ferrofluid cooled  
Neodymium magnet  
Tri-Mounting - flush, surface or angle  
12dB/Octave passive crossover included  
Rated Input Power: 110W  
Impedance: 4ohm  
Freq. Resp. 3KHz - 20KHz  
SPL 93dB



## TWS.3N 1" PEI Dome Tweeter

Tri-Mounting - flush, surface or angle  
Adjustable eyeball design  
Built-in 12 dB In-Line Crossover  
Rated Input Power: 110W  
Impedance: 4 ohm  
Freq. Resp. 2KHZ-21KHZ  
SPL 94dB



## TWS.4 1" Tantalum Dome Tweeter

Polished aluminum housing  
Dual-Mounting - surface or angle  
Built-in 12 dB In-Line Crossover  
Rated Input Power: 110W  
Impedance: 4 ohm  
Freq. Resp. 5KHZ-25KHZ  
SPL 95dB



## TWT.5 1" PEI Dome Tweeter

Surface or Angled Mounting  
12dB Passive Crossover Included  
Rated Input Power: 110W  
Impedance: 4 ohm  
Freq. Resp. 2KHZ-21KHZ  
SPL 97dB



## TWS.7 1" PEI Dome Tweeter

Ferrofluid cooled  
Neodymium magnet  
Tri-Mounting - flush, surface or angle  
12dB/Octave passive crossover included  
Rated Input Power: 110W  
Impedance: 4ohm  
Freq. Resp. 3KHz - 20KHz  
SPL 93dB





Components

Components



SM.650PROC



SM.650C



SM.650PRO

SM.800PRO



SM.650

SM.690



SM.800

SM PRO Series Speakers	SM.650PROC	SM.650PRO	SM.800PRO
Size	6.5"	6.5"	8"
MAX Power Handling	250w	250w	400w
RMS Power Handling	125w	125w	200w
Impedance	4-Ohm	4-Ohm	4-Ohm
Frequency Response	150-25kHz	150-10kHz	100-10kHz
Efficiency (1w/1m)	96dB	94dB	97dB
Mounting Depth	3.00"	3.00"	3.50"

SM Series Speakers	SM.650	SM.650C	SM.690	SM.800
Size	6.5"	6.5"	6" x 9"	8"
MAX Power Handling	200w	250w	250w	300w
RMS Power Handling	100w	125w	125w	150w
Impedance	4-Ohm	4-Ohm	4-Ohm	4-Ohm
Frequency Response	150Hz-25kHz	150Hz-25kHz	100Hz-10kHz	100Hz-10kHz
Efficiency (1w/1m)	93dB	91dB	93dB	94dB
Mounting Depth	2.75"	3.00"	3.00"	3.25"



Components



SME.650



SME.800



SM2.650



SM2.800

SME Series Speakers	SME.650C	SME.650	SME.800	SM2.650	SM2.800
Size	6.5"	8"	8"	6.5"	8"
MAX Power Handling	200w	250w	250w	250w	400w
RMS Power Handling	100w	125w	125w	125w	200w
Impedance	4-Ohm	4-Ohm	4-Ohm	4-Ohm	4-Ohm
Frequency Response	150-25kHz	150-10kHz	100-10kHz	150-25kHz	100-25kHz
Efficiency (1w/1m)	93dB	91dB	94dB	94dB	97dB
Mounting Depth	2.50"	3.50"	3.50"	3.50"	4.50"



SPT.05

SPT.06



SPT.20

SPT.22

DRIVERS



SPD.200

SPD.300



SPD.400

Pro Audio Tweeters	SPT.05	SPT.06	SPT.20	SPT.22	SPD.200	SPD.300	SPD.400
MAX Power Handling	250w	350w	350w	600w	200w	300w	400w
RMS Power Handling	125w	175w	175w	300w	100w	150w	200w
Voice Coil & Diaphragm	1" Aluminum	1" Aluminum	1" Aluminum	1.75" Aluminum	1" Phenolic	1.75" Titanium	3" Titanium
Impedance	4-Ohm	4-Ohm	4-Ohm	4-Ohm	4-Ohm	4-Ohm	4-Ohm
Frequency Response	2kHz-20kHz	2kHz-25kHz	2kHz-20kHz	2kHz-25kHz	3kHz-20kHz	1.5kHz-20kHz	500Hz-25kHz
Efficiency (1w/1m)	104dB	102dB	105dB	106dB	101dB	107dB	110dB
Mounting Depth	2.00"	1.125"	2.125"	2.50"	4.75"	8.25"	7.50"



# MARINE POWERSPORT HEAD UNITS

## MHU-32SXM

Marine Grade Digital Media Player w/ SiriusXM Interface, 32GB USB Playback, Bluetooth V4.0, & 3-Zone Audio



MHU-32SXM Upgrades Include:  
Ready for Sirius XM Satellite Radio Tuner SXV300;  
Enjoy over 140 channels, including commercial-free music plus the best sports, news, talk, comedy and entertainment  
3.2" Color TFT LCD Display w/ Interactive Graphic User Interface  
Rear USB Input for MP4 Video, MP3 & Other Audio File Playback  
3-Zone Audio Outputs w/ Independent Volume Level;  
4V 2-Channel Stereo Pre-Amp RCA Outputs (x3)  
4V 2-Channel Subwoofer Pre-Amp RCA Output  
Independent Subwoofer Volume Level & Crossover



## SMR-21B

Single DIN CD Player w/32GB USB Playback & Bluetooth



## MHU-32

Marine Grade Digital Media Player w/32GB USB Playback, Bluetooth V4.0, & 2-Zone Audio



MHU-32 Series Standard Features & Specifications:  
Marine Grade IP65 Watertight Enclosure Construction  
Conformal Coated Printed Circuit Boards & Components  
Zero Current Draw EPROM Memory Retains Presets  
Quick Disconnect Wire Harness for Pre-wire Installations  
Aluminum U-Bracket Mounting Hardware Included  
Waterproof Rubber Keys w/ 7-Color LED Backlighting  
Digital Media Player w/ AM/FM & Weatherband Tuner  
Bluetooth V4.0 Hands Free Calling from Enabled Devices  
A2DP Wireless Audio Playback from Enabled Devices  
Rear USB Input for MP3 & Other Audio File Playback  
Second Zone Audio Output w/ Independent Volume Level  
2-Band Equalizer with Audio Staging Controls  
300w 4-Channel High Level Speaker Outputs, 4-ohm Stable  
2-Channel Stereo RCA Audio Input for Personal Media Players  
On-Screen Battery Low Voltage Warning Indicator  
Overall Dimension: 5 1/8" W x 3" H x 2.25" D

CD/MP3, AM/FM & USB Receiver  
Theft Deterrent Detachable Faceplate  
Bluetooth V2.0 Hands Free Calling from Enabled Phone  
A2DP MP3 Audio Playback from Enabled Device  
Playback from 32GB USB of MP3 & WMA  
Playback from CD, CDR, CDRW of MP3 & WMA  
AUX Audio Input for Personal Media Devices  
Front & Rear Pre-Amp Output  
300w 4ch. MOSFET Speaker Outputs  
Custom & Pre-Set Equalizer Settings  
Audio Staging Controls  
12/24 Hour Digital Clock  
Remote Control Included  
Faceplate Carry Case Included



# Rubicon NANO

# MARINE POWERSPORT AMPLIFIER

High Efficiency Class D Full Range Amplifiers  
Hybrid Aluminum Alloy Heatsink for Optimum Dissipation  
2-ohm Stereo & 4-ohm Bridged Class D Full Range  
1-ohm Minimum Impedance Monoblock Operation  
MOSFET Power Supply w/ Audiophile Grade IRTM Transistors  
Military Grade SMT PCB Maintains Dynamic Performance  
Splash Resistant Conformal Coated Circuit Boards  
Direct Short, Thermal, & Overload Circuits Protect Amplifier  
200mV-6V Low Level RCA or High Level Signal Input  
Quick Disconnect High Level Wire Harness Included  
Easy DIY Install Single Sided Terminals & Controls  
4g Power Inout Terminals & 12g Speaker Output Terminals  
Variable 12dB High Pass, Low Pass, & Subsonic Crossovers  
12dB Bass Boost Increases Low Octave Harmonics  
Dash Mount Gain Control Module Included



Rubicon Nano	MR4.1400D	MR5.2000D	MR1.2000D
RMS Power 4Ω	125 x 4	75 x 4 + 300 x 1	400 x 1
RMS Power 2Ω	175 x 4	125 x 4 + 500 x 1	600 x 1
RMS Power 4Ω Bridged	350 x 2	250 x 2 + 500 x 1 (2Ω)	1,000 x 1 (1Ω)
Remote Gain Control	-	Included	Included
Dimensions: (6.50" w x 1.50"h)	9.00"	12.00"	10.00"

# STEALTH

95%+ Efficient  
Class D Full Range

Only 3" x 1.5" !

Install-Me-Anywhere  
Micro Footprint



High Efficiency Class D Full Range & Monoblock Amplifiers  
Hybrid Aluminum Alloy Heatsink for Optimum Dissipation  
2-ohm Stereo & 4-ohm Bridged Full Range Operation  
2-ohm Minimum Impedance Monoblock Operation  
Built-in Bluetooth V3.0 for Wireless Mobile Device Playback\*  
MOSFET Power Supply w/ Audiophile Grade IRTM Transistors  
Military Grade SMT PCB Maintains Dynamic Performance  
Splash Resistant Conformal Coated Circuit Boards  
Direct Short, Thermal, & Overload Circuits Protect Amplifier  
200mV-12V High Level or Low Level RCA Input  
Quick Disconnect RCA/High Level Wire Harness  
Quick Disconnect Power and Speaker Output Harness  
Variable 12dB High Pass, Low Pass, & Subsonic Crossovers  
12dB Bass Boost Increases Low Octave Harmonics (SM1)  
Dash Mount Gain Control Module Included (SM1)

Stealth Amplifiers	SM4.1000D	SM1.700D	ST4.1000DB
RMS Power 4Ω	90 x 4	250 x 1	90 x 4
RMS Power 2Ω	125 x 4	350 x 1	125 x 4
RMS Power 4Ω Bridged	250 x 2	-	250 x 2
MAX Power	1000w	700w	1000w
Remote Gain Control	-	Included	-
Dimensions (3"w x 1.5"h)	6.50"	6.50"	7.75"



# WAKE TOWER SPEAKERS

WTS Wake Tower Speakers offer maximum performance in the open air environment of any boat or off-road vehicle. Considering extreme outdoor conditions, WTS systems use the best materials to defend potentially damaging effects of water and UV sunlight, and impact resistance. Additional options for WTS enclosures include bright white or RGB LED grill rings, and a rear mounted high intensity LED spot light. Each WTS enclosure is pre-wired for the optional LED rings and spot light, making future add-on simple.

Immediately available WTS sets include 6.5" & 8" coaxial, in brilliant gloss white and black. Available spring 2017 in time for the 2017 boat season, an additional 8" coaxial set will feature a high efficiency horn loaded compression tweeter and midrange driver. Whatever your application, WTS speaker systems are guaranteed to carry your tunes across any lake, river, or desert.

## Enclosure Construction

WTS enclosure construction begins with Centrex, a material made in the USA, that offers incredible advantages to traditional polymer materials. Centrex is resilient to extreme temperatures, chemicals, & weathering, while maintaining impervious structural density. WTS enclosures resist harmful sunlight from deteriorating its brilliant coloring thanks to a UV inhibitor blended with the raw Centrex material.

Following the concept of superior materials, WTS mounting clamps are cast aluminum, with adjustment to 2.5" diameter, and can rotate 360°. Included rubber inserts accommodate installation to most round or oval watercraft wake towers and off-road vehicle roll cages. All speaker, LED ring, and LED spot light pre-wire passes thru the mounting bracket center, keeping all wiring contained in a dry environment.

## Speaker Characteristics

Coaxial speakers of WTS use waterproof materials, including blended polypropylene-mica cones, titanium dome tweeter, and rubber gaskets around the tweeter bridge. A neoprene gasket under the speaker frame prevents moisture from entering the enclosure, eliminating the possibility of electrical shorting. Color matching grills made of Centrex and a stainless steel mesh over the tweeter prevent harmful damage by rogue debris.

<b>WTS-6W</b>	Pair (2) of Gloss White 6.5" Wake Tower Speakers
<b>WTS-6B</b>	Pair (2) of Gloss Black 6.5" Wake Tower Speakers
<b>WTS-8W</b>	Pair (2) of Gloss White 8" Wake Tower Speakers
<b>WTS-8B</b>	Pair (2) of Gloss Black 8" Wake Tower Speakers
<b>WTS-LED</b>	Pair (2) of LED Spot Lights for WTS
<b>LED-6W</b>	Pair (2) of 6.5" Bright White LED Speaker Rings
<b>LED-6RGB</b>	Pair (2) of 6.5" RGB LED Speaker Rings
<b>LED-8W</b>	Pair (2) of 8" Bright White LED Speaker Rings
<b>LED-8RGB</b>	Pair (2) of 8" RGB LED Speaker Rings
<b>LED-10RGB</b>	Single (1) 10" RGB LED Speaker Ring



LED-RGB



LED-W



WTS-LED



# MARINE POWERSPORT SPEAKERS

MCS coaxial speakers and MSW subwoofer are a necessity to rockin' out in your boat or off-road vehicle. Using the same critical moisture and UV resistant Centrex™ material of the WTS wake tower enclosures, you can bet they withstand extreme outdoor conditions. Everyone will hear you coming thanks to ultra-light weight blended polypropylene-mica cones and ear piercing titanium dome tweeter. Each speaker set and subwoofer includes matching gloss white and gloss black grills with anodized aluminum mesh, and are pre-wired to install optional RGB LED grill rings. For that extra edge over the next guy, check out the 10" MCS coaxial speaker, guaranteed to knock anyone off their feet!!!

MCS.65

Premium Marine Grade 6.5", 8", 10" Speakers & 10" Subwoofer  
Injection Molded Frame & Grill Using Centrex® 814 UV Resistant Polymer  
Electro-Magnetic Components Sealed Internally within the Frame Structure  
Brushed Aluminum Grill Mesh Prevents Accidental Punctures  
Matching Gloss Black & Gloss White Grills Included with Each Set  
Injection Molded Polypropylene-Mica Composite Speaker Cone  
1.25" Extreme Temperature Tolerant Voice Coil w/ Epoxy Coating  
1" Formed Titanium Extended Frequency Range Dome Tweeter  
Closed-back Coaxial Tweeter w/ Isolated Electrical Connections  
Chemical and UV Resistant Thermo-Formed Rubber Gaskets & Surround  
Prewired Connection Terminals for Available LED Light Rings Built-in

MCS.80

MCS.10

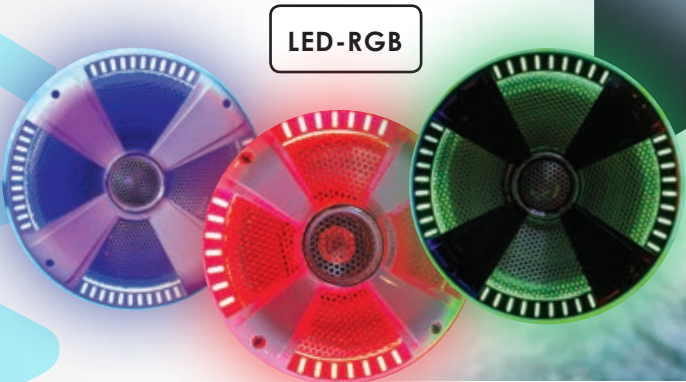
MARINE SPEAKERS	MCS.65	MCS.80	MCS.10
Size and Configuration	6.5" 2-way	8" 2-way	10" 2-way
MAX Power (watts)	200w	250w	300w
RMS Power (watts)	100w	125w	150w
Efficiency (1w/1m dB)	89.30dB	90.20dB	90.60dB
Mounting Depth	3.50"	4.00"	4.50"

# MARINE POWERSPORT SUBWOOFERS



MSW.102/104

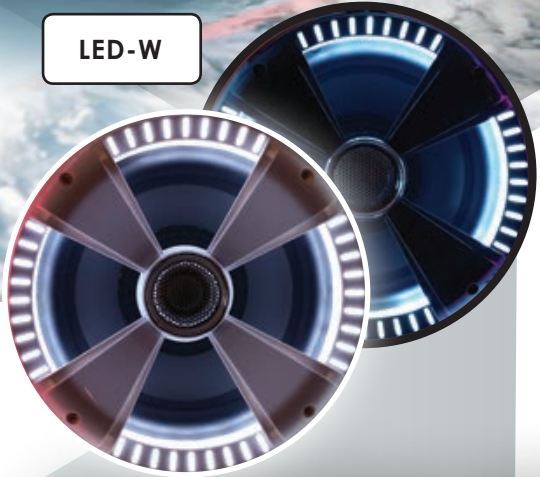
MARINE SUBWOOFER	MSW.102	MSW.104
MAX Power (watts)	600w	
RMS Power (watts)	300w	
Efficiency (1w/1m)	86.40dB	
Voice Coil Configuration	2" DVC 2Ω	2" DVC 4Ω
Mounting Depth	4.50"	
Optimum Sealed ft³	0.75ft³	
Optimum Ported ft³	1.00ft³	



- LED-6W
- LED-6RGB
- LED-8W
- LED-8RGB
- LED-10RGB

Pair (2) of 6.5" Bright White LED Speaker Rings  
Pair (2) of 6.5" RGB LED Speaker Rings  
Pair (2) of 8" Bright White LED Speaker Rings  
Pair (2) of 8" RGB LED Speaker Rings  
Single (1) 10" RGB LED Speaker Ring

LED-W







**SOUNDSTREAM**

© 2018 SOUNDSTREAM TECHNOLOGIES Montebello, CA, U.S.A.

All Right reserved.

Specifications and designs are subject to change without notice.

Printed in U.S.A.

[soundstream.com](http://soundstream.com)