

Listen and Feel

SOUNDSTREAM



2013

www.soundstream.com

REFERENCE AMPLIFIERS

People ask all the time... "Are the new Reference amps as good as the old ones?" Think about it! It would be very foolish to bring back the finest amps ever made and make them worse. While they were astonishing at the time, times change... Parts get better and engineers get smarter. The new Reference amplifiers are nothing short of phenomenal! But talk is cheap, so here is a condensed description of why these amps are the finest in the car audio market today...

Power Supplies

Reference uses non-regulated power supplies on Class A/B full range models, with a massive amount of capacitance to smooth out switching ripple. Ripple can be defined as perturbations or agitations on the PSU rails caused by speaker current draw, which can get into the low current stages and cause distortion. Class G monoblock models have a fully regulated power supply with rail switching so as to optimize power into different impedances. The output is almost the same into 2 or 1 ohm loads, making it possible to run virtually any amount of subwoofers, regardless of the quantity of voice coils and their impedance!

The PCBs are heavily refined with new techniques that keep capacitor charging and discharging totally separate via multiple power and ground star points, which is rarely executed properly. This results in lower distortion, less noise, higher damping factor and better stereo separation. High and low current sections utilize completely different ground paths to eliminate ground currents from affecting low level signal purity. We use discrete regulators, not cheap resistor/zener diode types, for the pre-amps and crossovers. And finally, only the best high current bipolar transistors and MOSFETs will do.

Output Stage

Balanced inputs, in conjunction with balanced outputs from the preamp section eliminates internal ground loops, improving signal-to-noise ratio and stereo separation. The wholly complementary topology with proper constant currents is great for distortion and power supply denunciation. Differential feedback is derived directly from the speaker output terminals for lower distortion, higher separation and higher damping factor. And of course, our discrete Triple Darlington bi-polar junction transistor driver and output stages to avoid loading the low current stages.

PCB

We use 2 ounce PCB copper for high current and low trace impedance. To reduce ground impedance, there are plenty of large solid copper ground planes on the PCB. Lastly, there are numerous guard traces, between the signal traces to eliminate adjacent interferences.

Preamp/Crossovers

Now that you might understand a little bit about why these amps are the finest in the industry, we're sure you'll agree that the preamp/crossover section is as sophisticated as it could possibly be and leaveS nothing to be desired. While many amps have simple high and low pass filters, that simply is not enough for the serious audiophile and competitor. Any audiophile knows that crossovers are equally, or more important, than the speakers themselves.

The Hawkins circuit returns and is instrumental in properly tuning your sub bass with boost and subsonic controls. Hawkins can also be used with a high pass filter to add more punch to the midbass drivers. What is new is the expanded capabilities. We use no switches with fixed frequencies. All controls use top of the line potentiometers for precise control. High pass filters start way down at 15Hz and go all the way up to 4kHz, meaning that this is perfect as a subsonic for subs, high pass for midbass, high pass for midrange in 3-way components or even a high pass for tweeters that get their own channel of amplification for elite systems. Low pass filters range from 4kHz down to 50Hz. And for you tweakazoids, yes you can bandpass all day long.

If you are getting dizzy trying to comprehend the possibilities or simply do not understand the value of this, here is a scenario... An elite sound quality competitor wants to build a car. Ultimately, he/she would not use the passive crossovers and keep everything 100% active for perfect tunability. The system will have a 3-way set of com-

REFERENCE	REF2.370	REF2.640	REF4.400	REF4.760	REF4.920	REF5.1000	REF1.500	REF1.1000
RMS Power @ 4Ω, 14.4V	110 x 2	190 x 2	70 x 4	115 x 4	145 x 4	95 x 4 & 270 x 1	-	-
RMS Power @ 2Ω, 14.4V	185 x 2	320 x 2	100 x 4	160 x 4	215 x 4	135 x 4 & 460 x 1	500	1,000
RMS Power @ 4Ω Bridged, 14.4V	370 x 1	640 x 1	200 x 2	380 x 2	460 x 2	270 x 2	-	-
RMS Power @ 1Ω, 14.4V	-	-	-	-	-	-	500	1,000
Remote Gain Control	-	-	-	-	-	Y	Y	Y
Dimensions: 2.25"h x 9.875"w	13.5"	16"	16"	20.5"	23"	23"	14"	18"



BLT
BALANCED LINE TRANSMITTER

There are very few amplifiers ever made that can do all of this processing on board without extra products and the possibility of bringing in auxiliary noise.

Back to the original question we get asked so often... "Are the new Reference amps as good as the old ones?" DUH! If you do not think you can hear a difference, do yourself a favor... Go get schooled at a Soundstream Reference dealer. There is simply nothing better...

Listen & Feel...

Tarantula AMPLIFIERS

Clean and classy, Tarantula amplifiers are all new for 2013. Overcompensating power supplies deliver the juice when it's needed most. Monoblock subwoofer amplifiers benefit from high efficiency Class D technology, and full range models fall back on reliable Class A/B circuitry design for superb sound quality. The best of both worlds, a hybrid Class D & Class A/B 5 channel model offers sound quality and high power in one chassis.



TARANTULA AMPS	TA2.160	TA2.400	TA4.280	TA4.480	TA4.720	TA5.1250	TA1.600D	TA1.1000D	TA1.2000D	TA1.3000D
RMS Power 4Ω	55 x 2	135 x 2	50 x 4	90 x 4	120 x 4	75 x 4 + 325 x 1	250 x 1	400 x 1	700 x 1	800 x 1
RMS Power 2Ω	80 x 2	200 x 2	70 x 4	120 x 4	180 x 4	125 x 4 + 500 x 1	375 x 1	700 x 1	1,300 x 1	1,400 x 1
RMS Power 4Ω Bridged	160 x 1	400 x 1	140 x 2	240 x 2	360 x 2	250 x 2 + 750 x 1 (1Ω)	-	-	-	2,500 x 1 (1Ω)
RMS Power 1Ω	-	-	-	-	-	-	600 x 1	1,000 x 1	2,000 x 1	3,000 x 1 (.5Ω)
Remote Gain Control	-	-	-	-	-	Included	Included	Included	Included	Included
Dimensions (8" w x 2" h)	9.875"	13.25"	12.00"	15.25"	17.00"	18.25"	10.50"	13.00"	18.00"	20.50"

Tarantula NANO AMPLIFIERS

We're in a time where small is "in". Smaller, more economical vehicles are more and more desirable. But that doesn't mean you have to sacrifice big power for your system. The new Tarantula NANO amplifiers pack huge amounts of power into small chassis thanks to efficient Full-Range Class D topology and SMT technology. Complemented with every possible preamp adjustment, the NANO amplifiers leave nothing to be desired...



- Class D Full Range SMT Circuitry
- Double Sided Composite Epoxy PCB
- 2-Ohm Stereo, 4-Ohm Bridged Multi-Channel
- 1-Ohm Stable Class D Monoblock
- Three-Way Protection Circuitry
- Delayed On/Off Circuit
- Tri-Mode Capable (2/4/5 ch. models)
- Variable 12dB High, Low, & Subsonic Crossovers
- Band-Pass Crossovers (4ch & 5ch.)
- Input Source Selector (4ch. & 5ch.)
- Variable 12dB 50Hz Bass Boost (1ch.)
- Dash Mounted Remote Gain Control (5ch. & 1 ch.)
- Direct Wire 8ga. Power & Speaker Terminals
- 0ga Reducer Terminal Included

TARANTULA NANO	TN2.600D	TN4.900D	TN5.950D	TN1.1200D
RMS Power 4Ω	200 x 2	150 x 4	85 x 4 + 270 x 1	660 x 1
RMS Power 2Ω	300 x 2	225 x 4	130 x 4 + 430 x 1	1,050 x 1
RMS Power 4Ω Bridged	600 x 1	450 x 2	260 x 2 + 430 x 1	1,200 x 1 (1Ω)
Remote Gain Control	-	-	Included	Included
Dimensions (6.625" w x 1.75" h)	6.825"	8.875"	12.625"	12.625"

RUBICON AMPLIFIERS

STEALTH AMPLIFIERS

Stealth amplifiers offer not only a small footprint, they're also stackable. While most compact amps in today's marketplace are Class D, Stealth amplifiers are all Class A/B for the purest uncolored sound reproduction.

Boasting a gorgeous, yet aggressive, blue hairline finish, there's no mistaking the fact that the Rubicon amplifiers stand for what Soundstream intended many years ago... Strong quality and strong identity - These bad boys are at the top of their game with the most modern technology available!

Midnight Blue Finish w/ Brushed Accents
Class A/B Full Range Monoblocks Available
12dB Variable High, Low, & Subsonic Crossovers
6dB & 12dB 50Hz Bass Boost
2 & 4 ch. Models Band-Pass Crossovers
180° Phase Control for 5 Ch. & Monoblocks
Class Ds Strapable w/ 2Ω
High Level or 200mV-6V Low Level Input
Direct 4 ga. Power & 8 ga. Speaker Terminals
Dash Mount Remote Gain Control Included

RUBICON AMPLIFIERS	RUB2.250	RUB2.600	RUB4.500	RUB4.600	RUB5.800	RUB1.1000D	RUB1.1600D	RUB1.2500D
RMS Power 4Ω	75 x 2	180 x 2	75 x 4	100 x 4	70 x 4 + 200 x 1	-	-	-
RMS Power 2Ω	125 x 2	300 x 2	125 x 4	150 x 4	115 x 4 + 340 x1	800 x 1	1,100 x 1	1,700 x 1
RMS Power 4Ω Bridged	250 x 1	600 x 1	250 x 2	300 x 2	230 x 2 + 340 x 1	1,000 x 1	1,600 x 1	2,500 x 1
Remote Gain Control	-	Included	-	-	-	Included	Included	Included
Dimensions (8" w x 2" h)	9.875"	19.75"	13.875"	15.5"	19.75"	13.25"	15.75"	20.75"



STEALTH AMPLIFIERS	STL2.350	STL2.560	STL4.320	STL4.500	STL6.620	STL1.600D	STL1.1200D
RMS Power 4Ω	100 x 2	150 x 2	50 x 4	80 x 4	60 x 4 + 100 x 2	400 x 1	475 x 1
RMS Power 2Ω	175 x 2	260 x 2	80 x 4	125 x 4	80 x 4 + 150 x 2	600 x 1	700 x 1
RMS Power 4Ω Bridged	350 x 1	560 x 1	160 x 2	250 x 2	160 x 2 + 300 x 1	-	1,200 x 1 (1Ω)
Remote Gain Control	-	-	-	-	-	Included	Included
Dimensions (6.5" w x 2" h)	9.625"	11.25"	9.625"	11.25"	11.25"	9.625"	11.25"

Picasso

AMPLIFIERS

Brushed Black Aluminum Finish w/ Accent Lighting
4-ohm Bridged, 2-ohm Stereo Class A/B Full Range
2-ohm Stable Class A/B Monoblock
1-ohm Stable Class D Monoblocks
Variable 12dB High, Low, & Subsonic Crossovers
High Level or 200mV-6V Low Level Input
4g Power & 8ga Speaker Terminals
6/12dB 45Hz Bass Boost
180° Phase Switch (D)
Class D Strappable w/ 2-ohm Load
Dash Mount Remote Gain Control Included

PICASSO MONOBLOCK	P1.210	P1.600D	P1.1000D	P1.1200D	P1.1500D
RMS Power 4Ω	130 x 1	240 x 1	400 x 1	500 x 1	600 x 1
RMS Power 2Ω	210 x 1	400 x 1	750 x 1	900 x 1	1,000 x 1
RMS Power 1Ω	-	600 x 1	1,000 x 1	1,200 x 1	1,500 x 1
Remote Gain Control	Included	Included	Included	Included	Included
Dimensions (8.25" w x 2" h)	7.75"	10.25"	11.75"	12.75"	16"

PICASSO FULL RANGE	P2.150	P2.200	P2.400	P4.140	P4.260	P4.500	P4.800	P5.610
RMS Power 4Ω	50 x 2	70 x 2	125 x 2	25 x 4	45 x 4	80 x 4	125 x 4	60 x 4 + 170 x 1
RMS Power 2Ω	75 x 2	100 x 2	200 x 2	35 x 4	65 x 4	125 x 4	200 x 4	85 x 4 + 270 x 1
RMS Power 4Ω Bridged	150 x 2	200 x 2	400 x 2	70 x 2	130 x 2	250 x 2	400 x 2	170 x 2 + 270 x 1
Dimensions (8.25" w x 2" h)	7"	8"	12"	6.5"	11"	13"	19"	18.75"

Picasso

NANO

Cars come in all different shapes, most in the same size; compact. So, we've engineered these mini Picassos to fit in virtually any location in your ride. Other sport compact amplifiers use bizarre technologies with psuedo power supplies. Picasso Nanos use tried and tested MOSFET power supplies & tenacious Class D circuitry.



Small Compact 4.75" Wide Chassis
4-ohm Bridged/2-ohm Stereo Class D Full Range
2-Ohm Stable Class D Monoblocks
MOSFET PWM Power Supply
80Hz 12dB HP or LP Crossover (2/4 ch.)
50-250Hz Variable 12dB LP Crossover (mono)
10-50Hz Variable 12dB Subsonic Crossover (mono)
12dB 45Hz Bass Boost (mono)
200mv-6V Low Level Input Sensitivity
High Level Input
Dash Mount Remote Gain Control

PICASSO NANO	PN2.350D	PN4.320D	PN4.520D	PN5.540D	PN1.450D	PN1.650D
RMS Power 4Ω	115 x 2	60 x 4	100 x 4	50 x 4 + 170 x 1	260 x 1	400 x 1
RMS Power 2Ω	175 x 2	80 x 4	130 x 4	75 x 4 + 240 x 1	450 x 1	650 x 1
RMS Power 4Ω Bridged	350 x 1	160 x 2	260 x 2	150 x 2 + 240 x 1	-	-
Remote Gain Control	-	-	-	Included	Included	Included
Dimensions (4.75" w x 1.5" h)	5.50"	7"	9.25"	9.25"	8"	9.25"

SYNTHESIS

Digital Signal Processor

Synthesis is a unique DSP processor brought to you by the Product Development Team at Soundstream. A 24bit/96kHz digital audio processor allowing you full control of your system. With mobile audio changing daily, we thought to our self's what could we bring to the market that would meet the needs of all vehicles, weather a factory system or the biggest baddest after market systems.

With 6 channel high level inputs, the Synthesis allows you to ingrate seamlessly with your factory radio. The system allows you full control of aftermarket speakers and amplifiers without replacing your factory head unit, and best of all you don't loose any of your factory installed options. Synthesis allows you to fine tune your system with the easy to use program controlled by any laptop. Available on both MAC and PC.

With 8 channel outputs the Synthesis allows you to create multiple platforms. Weather a simple 2 way setup with subwoofers or a 4 way setup with multiple drivers. Synthesis delivers the highest in audio quality without compromising your wallet.



Hardware

- 172MHz -28/56bit DSP
- 24bit ADC/DAC
- 96kHz sample rate
- 114db DR ADC converters
- 114db DR DAC converters
- Balanced OR Unbalanced RCA Inputs
- 8V RCA Output/ Balanced
- 31 Band Graphic EQ
- 9 Band Parametric EQ
- 4 Way crossover
- Time Alignment

Software Control

- USB 2.0 interface
- Plug&Play No driver required
- WinXP/Vista/7 & MAC Compatible
- Firmware upgradable for future expansion

VISIT SOUNDSTREAM.COM FOR MORE DETAILS ABOUT SYNTHESIS.

iCQ Integration Modules

Many vehicles have sophisticated radios with data systems including steering wheel controls, navigation, or Bluetooth functions. iCQ modules allow integration of mild to wild aftermarket systems without sacrificing key OEM features.

Connect the speaker level outputs of your factory radio to the appropriate iCQ processor via front, rear, or subwoofer high level inputs. Each stereo pair has an independent line driver with level control, then converts to low-level RCA outputs. iCQ modules also provide an auxiliary input for multiple source integration. An amplified remote turn-on output is activated by built-in signal sensing or a dedicated remote turn-on input. We've even included a dash mount remote gain module for overall level control from the drivers seat.

Up to 8ch. OEM Integration Module

Multi-Channel High Level Inputs on Direct Wire Connectors
Low Noise Floor Line Driver w/ Independent Level Control
Amplified Remote Turn-on by Signal Sense or Direct Input
Auxiliary Source High Level Input
Dash Mount Remote Level Control Included



	iCQ.2	iCQ.4	iCQ.6	iCQ.8
Input/Output Channels	2 x 2	4 x 4	6 x 6	8 x 8
Subwoofer Input	-	-	Yes	Yes
Auxiliary Input	Yes	Yes	Yes	Yes
Remote Gain Control	Included	Included	Included	Included
Dimension: (4.5" w x 1" h)	4.50"	6.75"	8.00"	9.00"

REFERENCE R1

Every once in a while a technology comes along that riases the bar of product performance. In 2013 Soundstream has done just that, changing your perception of subwoofer performance. We proudly re-introduce the legend-ary Reference R1, a unique woofer with a twist on conventional design.

The new R1 boast 30% larger cone surface area than most conventional 12" subwoofers, improving overall SPL. A concealed inverted surround receives the larger diameter concave primary cone. Acoustic canceling tuned channels formed in the underside of a PVC gasket virturaly eliminate undesireable cone-radiated upper octave frequencies. Each channel is specifically tuned to acoustically cancel various frequency bandwidths, yielding clean & un-colored sound reproduction.

R1 challenges the reference standard of subwoofer performance...

Cast Aluminum Soundstream Reference R1 Frame
Clandestine Inverted Roll Polyether Foam Surrund
Oversized Concave IMPP Primary Cone
Non-Transfer Cellulose Pulp Sub-Cone
Acoustic Canceling Polyvinyl Chloride Gasket
Extreme Temperature DVC Voice Coil
Oversaturated Zinc Plated T-Yoke & Top Plate
317oz MotorMagnet Assembly Weight
Sub-Cone Assembly & T-Yoke Venting
12ga Compression Wire Terminals
Suspension Integrated Tinsel Leads
Dual Spider Suspension

Patent Pending

REFERENCE R1	R1.122	R1.124
RMS Power (watts)	850	850
Efficiency (1w/1m)	82.90	83.10
Voice Coil Configuration	2.5" DVC 2Ω	2.5" DVC 4Ω
Mounting Depth	7.875"	7.875"
Optimum Sealed ft³	1.00	1.00
Optimum Ported ft³	2.00	2.00

REFERENCE

REFERENCE R3	R3.8	R3.10	R3.12	R3.15
RMS Power (watts)	500	700	800	900
Efficiency (1w/1m)	80.70	82.10	84.66	90.20
Voice Coil Configuration	2.00" DVC 2Ω	2.5" DVC 4Ω	2.5" DVC 4Ω	2.5" DVC 4Ω
Mounting Depth	5.25"	6.00"	6.875"	7.625"
Optimum Sealed ft³	0.75	1.00	1.50	2.75
Optimum Ported ft³	1.25	1.50	2.25	275

Woven Fiberglass Composite Cone

All Reference R3 woofers use fiberglass stranding woven together for ultimate strength and less elasticity. A heavy soaking in epoxy combined with the sonic qualities of pulp paper backing proves itself wor- thy of any system.

100% OFC 4-Layer Voice Coil

R3 woofers use generous 1.50" long, 2.5" diameter 100% OFC Copper voice coils. A vented Aluminum former extract and dissapate any heat build-up, resulting in improved power handling.

Extended Excursion Polyurethane Surround

Polyurethane is a foam compound used in the manufacture of countless gasket and insulation products, known for its adhesive bonding properties. Reference R3 woofers utalize an extended ex- cursion polyurethane surround for it's strength and flexible properties during extreme movement.

Back Plate & T-Yoke Venting

Heat build-up is a leading cause of catastrophic woofer failure. Vent- ing built into the T-Yoke, back plate, and voice coil extract and dis- sapate heat, ensuring R3 woofers keep their cool.

Most of today's car audio products consist of several custom tooled parts, all which cost extra money. The design goal for RF-8W was to engineer a phenomenal audiophile-grade subwoofer that did not cost a fortune. If you're looking for chrome or something really flashy, look somewhere else. If you're all about performance, look no further.

We used simple, classic materials for the best sound quality; non-pressed pulp paper cones, foam surrounds, and Conex suspension.

RF-8W is also a great fit in a factory 8" subwoofer loca- tion...

REFERENCE R1	RF.8W
RMS Power (watts)	180
Efficiency (1w/1m)	83.00
Voice Coil Configuration	2.00" DVC 4Ω
Mounting Depth	4.00"
Optimum Sealed ft³	0.60
Optimum Ported ft³	0.75

Tarantula

SUBWOOFERS

It is that time again. Time for Tarantula subwoofers to evolve... Over the years, the Tarantula subs have encountered many changes. For 2012, we are getting back to basics. No foo-foo, pretty parts that have no performance value. T7 is all about performance, period. From the High BL motor, to the heat extracting aluminum dust cap, to the lumpy cone, all the parts make sense and have a purpose. So, if you want to pay extra money for a pretty chrome or plastic shrouded woofer, go to the swap meet. If you want your money to pay for sheer performance, T7 is for you...



T7 Re-cone Kit

- Non Pressed Paper Pulp Cone
- Aluminum Heat-sink Dust-cap
- Nickel Plated 8ga. Compression Wire Terminals
- 2.5" 430° Voice Coil on Aluminum Former
- Die-Cast Aluminum Frame w/ Textured Finish
- Polyether Foam Surround
- Dual Poly-Cotton Suspension Spiders
- 170oz. Strontium Ferrite Magnet
- Vented T-Yoke Back-plate
- Re-cone Kit Available

TARANTULA T7	T7.104	T7.102	T7.124	T7.122	T7.154	T7.152
RMS Power (watts)	700	700	800	800	900	900
Efficiency (1w/1m dB)	83.5	83.1	85.3	86.8	89.1	80.0
Voice Coil Configuration	2.5" DVC 4Ω	2.5" DVC 2Ω	2.5" DVC 4Ω	2.5" DVC 2Ω	2.5" DVC 4Ω	2.5" DVC 2Ω
Mounting Depth	5.875"	5.875"	6.625"	6.625"	7.825"	7.825"
Optimum Sealed Box	0.75	0.75	1.00	1.00	2.00	2.00
Optimum Ported Box	1.50	1.50	2.50	2.50	4.00	4.00

RUBICON

SUBWOOFERS



Closed Cell Polyurethane Surround

A strong and flexible heat resistant compound, nitrile butadiene rubber is used widely in automotive applications. Rubicon woofers utilize an extended excursion nbr surround for it's strength and flexible properties during extreme movement.

Overcast Stitched Cone Assembly

Surrounds of Rubicon woofers are double overcast stitched directly to the cone surface. In addition to superior adhesives, overcast stitching improves the conventional bond between cone and surround.

Back Plate & T-Yoke Venting

Heat build-up is a leading cause of catastrophic woofer failure. Venting built into the T-Yoke, back plate, and voice coil extract and dissipate heat, ensuring Rubicon woofers keep their cool.

100% OFC 4-Layer Voice Coil

Rubicon woofers use generous 1.25" long, 2.00" diameter 100% OFC Copper voice coils. A vented Aluminum former extract and dissipate any heat build-up, resulting in improved power handling.

RUBICON SUBWOOFERS	RUB.102	RUB.104	RUB.122	RUB.124	RUB.152	RUB.154
RMS Power (watts)	450	450	500	500	550	500
Efficiency (1w/1m)	82.80	87.30	86.04	85.67	85.15	86.97
Voice Coil Configuration	2" DVC 2Ω	2" DVC 4Ω	2" DVC 2Ω	2" DVC 4Ω	2" DVC 2Ω	2" DVC 4Ω
Mounting Depth	6.00"	6.00"	6.625"	6.625"	7.50"	7.50"
Optimum Sealed ft³	0.75	0.75	1.25	1.25	1.50	1.50
Optimum Ported ft³	1.50	1.50	2.00	2.00	3.00	3.00



STEALTH-13

SUBWOOFER

Simply put, this woofer is the shallowest woofer on the market. It is a full 13.25" subwoofer that can play not only in a tiny .5 cubic foot enclosure, but without losing low bass extension. Perfect for applications in doors, under seats, foot wells, & trucks.

Low Bass In No Space!

Proprietary Cast Aluminum Basket
Inverted Motor Assembly
Solid Aluminum Cone
2" Mounting Depth
5" Voice Coil
Semi-Circular Frame Venting

STEALTH-13

RMS Power (watts)	200
Efficiency (1w/1m dB)	80.82
Voice Coil Configuration	5" SVC 4Ω
Mounting Depth	2"
Optimum Sealed Box	0.75
Optimum Ported Box	-

STEALTH-13EN

.6 cubic foot Preloaded Enclosure
Carpeted Black w/ Embroidered Accents
30" x 14.5" x 5.25" / 2.25"



PICASSO THIN	PXW-10T	PXW-12T
RMS Power (watts)	160	180
Efficiency (1w/1m)	86.50	86.70
Voice Coil Configuration	2.00" DVC 2Ω	2.00" DVC 4Ω
Mounting Depth	2.875"	2.875"
Optimum Sealed ft³	0.50	1.00
Optimum Ported ft³	-	-

Picasso

SUBWOOFER

Injection Molded Polypropylene Cone
Overcast Stitched Cones
NBR Rubber Surround
2" SVC 4-Ohm Voice Coil
Embossed Dust Cap
Frame Voice Coil Venting
Vented T-Yoke & Back Plate



PICASSO SUBWOOFERS	PC0.8	PC0.10	PC0.12
RMS Power (watts)	250	300	350
Efficiency (1w/1m)	87.49	86.40	88.41
Voice Coil Configuration	2" SVC 4Ω	2" SVC 4Ω	2" SVC 4Ω
Mounting Depth	4.00"	5.00"	6.00"
Optimum Sealed ft³	0.50	0.75	1.00
Optimum Ported ft³	1.00	1.50	1.75

WGRILL.12C -Chrome
WGRILL.12B -Black

12" Soundstream Spider Grill for
Picasso, Rubicon, Tarantula, &
Reference R3 Subwoofers.



USB-8A

8" Preloaded Under Seat Enclosure w/ Amplifier

150w Amplifier Built-in
200mV-3V Input Sensitivity
Variable 12dB 50-150Hz LP Crossover
Variable 12dB 45Hz Bass Boost
180° Phase Switch
>95dB Signal-to-Noise Ratio
0.05% Total Harmonic Distortion
Remote Gain Control Included
Dimensions: 3"h x 9.5"w x 14.5L



X3

ies. Or maybe you have a lot higher impedance or enclosure impedance rise than you suspected. Either way, you will know how much power you are getting out of your X3 amplifier and can take the step needed to use the X3 amps to their winning potential. It is that simple...



X3 AMPLIFIERS	X3.2K4	X3.60	X3.71
RMS Power 4Ω, 14.4V, 1% THD	250 x 4	1,050 x 1	1,750 x 1
RMS Power 2Ω, 14.4V, 1% THD	400 x 4	1,920 x 1	3,240 x 1
RMS Power 1Ω, 14.4V, 1% THD	600 x 4	2,780 x 1	4,450 x 1
RMS Power 4Ω, 16V, 10% THD	-	3,180 x 1	2,010 x 1
RMS Power 2Ω, 16V, 10% THD	-	2,300 x 1	3,780 x 1
RMS Power 1Ω, 16V, 10% THD	-	3,180 x 1	5,180 x 1
Remote Gain Control	Included	Included	Included
Dimensions (11.5" w x 2.5" h)	15.75"	21.00"	23.75"

VISIT SOUNDSTREAM.COM/X3 FOR MORE DETAILS ABOUT X3 AMPLIFIERS

1-Ohm Stable Class D Competition Amplifiers
Non-regulated MOSFET Power Supply
Up to 16V Power & 10V Audio Input
0ga Input & 8ga Output Terminals
4ch. Bridgeable w/ 2-Ohm, 1-Ohm Stereo
Monoblocks Strapable w/ 2Ω Load
12dB High/Low Pass Crossovers (4ch)
18dB Low-Pass & Subsonic Crossovers (mono)
Variable 18dB 45Hz Bass Boost
180° Phase Control (mono)
Remote Gain Control (mono)

X3

WTH Makes X3 Subwoofer So Unieue...?

Extreme Power Handling SPL Competition Subwoofers
Hight Denesity Forged Aluminum Frame
Proprietary Asymetrical S-Block Foam Surround
Massive 4" CCAW Voice Coil on Aluminum Former
Tripple Nomex Spider Suspension
Epoxy Coated Pulp Paper Cone
High BL Triple Stack Motor Assembly
Voice Coil Perimeter venting and T-Yoke Vent
8ga Duplex Direct Connection Wire Terminals
Glue-less DIY Re-Cone Kit Available

VISIT SOUNDSTREAM.COM/X3 FOR MORE DETAILS ABOUT X3 SUBWOOFERS

X3 SUBWOOFER	X3.122	X3.152	X3.182
Burp Power (watts)	95V (9kW)	100V (10kW)	105V (11kW)
RMS Power (watts)	71V (5kW)	77V (6kW)	84V (7kW)
Efficiency (1w/1m dB)	87.98	92.43	92.9
Voice Coil Configuration	4" DVC 2Ω	4" DVC 2Ω	4" DVC 2Ω
Mounting Depth	7.50"	8.5"	10"
Optimum High Tuning (55Hz)	2.25	3.75	5.00

XXX AMPLIFIER

Class D mono-block SPL Competition Amplifier.
Winner of 5 trophies at Daytona Spring Break Nationals!

Non-regulated MOSFET Power Supply
Up to 16V Power & 7V Audio Input
0ga Input & 8ga Output Terminals
24dB Low-Pass & Subsonic Crossovers
18dB 40-120Hz Bass Boost
Remote Gain Control
Clear Plexi Glass Bottom Included

XXX-15000D		
RMS Power 2Ω, 14.4V, 5% THD		9,360
RMS Power 1Ω, 14.4V, 1% THD		14,800
RMS Power 2Ω, 16V, 5% THD		10,400
RMS Power 1Ω, 16V, 5% THD		16,800
Dimension: 12.75" w x 2.75" h x 32.75" l 7.75"		



SPLX SUBWOOFERS

SPLX subwoofers have been around for several years. Every few years they change to meet the needs of the serious competitor or the hard core fanatic. The new SPLX-HF drivers feature a higher resonant frequency, desirable for many competitors. They are efficient overall and are way louder in the main bass range from 40Hz-80Hz.

Cast Aluminum Frame
Dual 2 ohm 3" CCAW Coils
Forged & Vented Back Plate
Epoxy Coated Spruce Pulp Cone
Dual NOMEM Spiders
Re-cone Kits Available

	SPLX.122HF	SPLX.152HF
RMS Power (watts)	1,000	1,250
Efficiency (1w/1m dB)	87.25	90.05
Voice Coil Configuration	3" DVC 2Ω	3" DVC 2Ω
Mounting Depth	7"	8.375"
Optimum Hlgh Tuning (55Hz)	3.00	4.00
Optimum Low Tuning (35Hz)	3.50	5.00

XBP-10

SPL Competition Signal Processor

2 Signal Paths – Sound Quality & SPL
Individual Level Control for each Signal Path
5Volt or 10Volt Signal Voltage Switch
50Hz Tone Generator for Tuning
Variable 25-85Hz Bass EQ
Dash Remote with Boost Level, Subsonic Filter, and SQ-to-SPL Signal Path Switch
4 Pairs of Outputs – 1 Main and 3 w/ Variable Delay for Time Alignment of Subwoofers
Through Pass Outputs
Turn On/Off Delay to Eliminate Pops
Plexi Glass Setting Cover Included

LEARN MORE ABOUT XBP.10 AT SOUNDSTREAM.COM/XBP10



REFERENCE

COMPONENTS

RF3.6C	
Size & Type	6.5" / 2.5" 3-way
Power Handling (watts)	100w
System Efficiency	87dB
Top Mount Depth	2.625"

Wow! The story behind these components would take several pages. 3 years of studying European drivers is evident. All 3 drivers use the highest grade of powerful Neodymium magnets in the motors. The 1" tweeter uses a silk surround on the diaphragm to yield uncommonly smooth response for a metal dome tweeter. The 6.5" midbass uses a Kevlar-reinforced pulp paper cone, and with a laminated foam backing on the cone, the perfectly damped, uncolored sound is phenomenal.

The 2.5" midrange is really an unique piece. It uses an aluminum cone and dustcap to eliminate cone distortion caused by cone flex. It will fit in all dash-top location as well as A-pillars since it is only 1.375" deep. With the midrange and tweeters up higher, there is no need for bulky, expensive kickpanels. And the soundstage will be high, wide and deep. The crossover, being the most critical part of the set, uses 400Hz and 4kHz points to stay away from the sensitive 1kHz range. The tweeter has a PTC switch for protection and a 5-way L-Pad to set the level from +4dB to -4dB.

Easily rival components costing 3x the price, these components can satisfy even the most ruthless audiophile.

STEALTH

COMPONENTS

STL.65C	
Size & Type	6.5" 2-way
Power Handling (watts)	80w
System Efficiency	94dB
Top Mount Depth	1"

WAIT! DO NOT let this little component set fool you. Once a dust-bunny covered relic in the "useless sample" bin at Soundstream headquarters, the new Stealth components took us all by surprise. It was originally thought to be a passive radiator, but to our amazement, these lil' guys PACK A PUNCH!!!

Even with only 1" mounting depth, the 6.5" woofer is capable of reproducing the lowest of lows and snappiest kick bass with very little effort! An inverted neodymium motor structure allows a shallow and compact profile frame. The cone and dust cap, ahemm..., is 1-piece IMPP with recesses molded into the back side to receive the voice coil structure. This direct connection of cone to voice coil yields the snappy reaction of a flat piston driver, virtually eliminating cone-radiated distortion. Very little suspension is necessary for this configuration, but what's there snuggles up to the cone underside in its own recess, and attaches directly to a recess in the frame for the motor. WTH you say? The suspension of conventional drivers attaches to the voice coil and can flex, bend, or warp with the sometimes violent acceleration of the voice coil. Since the suspension attaches to the fixed structure of the frame, the voice coil is less likely to lose control, keeping its linearity. BUT WAIT, THERE'S MORE!!!

The tweeter, damn, don't get us started, is a smooth & crisp (yes that's possible) 1.25" inverted dimpled Titanium dome diaphragm with phase plug. It's ok..., read that again. The high-frequency response of this tweeter is phenomenal. What you expect from a luxurious component set at quadruple the value. Even though the diaphragm is an unconventional 1.25", the tweeter can be removed from the housing structure and installed in virtually any OEM tweeter location. Oh yeah, did we mention this tweeter sounds really good? It's so killer, we also offer it to you as an add-on to replace your junky factory tweeter, you're welcome...



Shallow Mount High Efficiency Component Set
Low Resonance Polycarbonate Frame
1" Mounting Depth!
1-Piece Polypropylene Dome Cone
High Strength Neodymium Magnets
1" Titanium Inverted Dome Tweeter
Passive 12dB Crossover Included
+/- 3dB Tweeter Attenuation Switch
PTC Tweeter Protection

Tarantula

COMPONENTS

TC.6	
Size & Type	6.5" 2-way
Power Handling (watts)	140w
System Efficiency	93dB
Top Mount Depth	2.75"

Woven Fiber Woofer Cone
Forge Cast Aluminum Frame
1" Voice Coil on Aluminum Former
Direct Connect Wire Terminals
1" Horn Loaded Teteron/Silk Dome Tweeter
Machined Aluminum Tweeter Housing
Flush or Surface Mounting Tweeter
12dB Crossover w/ Tweeter Attenuation
Frequency Response: 50-22kHz

Picasso

COMPONENTS

PC.6	
Size & Type	6.5" 2-way
Power Handling (watts)	120w
System Efficiency	92dB
Top Mount Depth	2.625"

Polypropylene Injection Cone
Solid Aluminum Phase Plug
NBR Rubber Surround
1" Voice Coil on Aluminum Former
Quick Disconnect Terminals
Conex Spider Suspension
1" Teteron Dome Tweeter
Pivoting Flush Mount Tweeter
Passive Crossover Included
Tarantula Spider Grill Included
Frequency Response: 60-20kHz

BRACHNID

COMPONENTS

SC-6T	
Size & Type	6.5" 2-way
Power Handling (watts)	80w
System Efficiency	92dB
Top Mount Depth	2.50"

Polypropylene Injection Cone
NBR Rubber Surround
1" Voice Coil on Aluminum Former
Quick Disconnect Terminals
Conex Spider Suspension
1" Flush Mount Dome Tweeter
Passive Crossover Included
Speaker Grill Included
Frequency Response: 70-20kHz



Tarantula

FULL RANGE



Black Zirconium coated cones, Ferro fluid cooling, 1-inch silk dome tweeters and progressively slanted surrounds all combine to make the Tarantula line of coaxial speakers the best bet for those who want to use no more room than a standard coaxial, but insist on the sound quality of a component system.

Injection Molded Polypropylene Cone
1" Aluminum Voice Coil
Progressive Slant Butyl Rubber Surround
Optional Bi-Amp Operation

1" Swivel Silk Dome Tweeter
PTC Tweeter Protection
Passive Crossovers Included
3 Ohm Impedance



2-Way Crossovers Included
with all models

TARANTULA SPEAKERS	SST6.9	SST6.5	SST5.7	SST5.2	SST4.6	SST4.0
Size and Configuration	6" x 9" 2-way	6.5" 2-way	5" x 7" 2-way	5.25" 2-way	4" x 6" 2-way	4" 2-way
RMS Power (watts)	150w	120w	130w	100w	100w	85w
Efficiency (1w/1m dB)	90dB	90dB	90dB	89dB	89dB	80dB
Top Mount Depth	3.375"	2.75"	2.50"	2.375"	2.125"	2.00"



RUB.692



RUB.572



RUB.652

RUB.502

RUBICON

FULL RANGE



RUBICON SPEAKERS	RUB.692	RUB.652	RUB.572	RUB.502	RUB.402
Size and Configuration	6" x 9" 2-way	6.5" 2-way	5" x 7" 2-way	5.25" 2-way	4" 2-way
RMS Power (watts)	130w	90w	110w	75w	65w
Efficiency (1w/1m dB)	91dB	90dB	89dB	88dB	88dB
Top Mount Depth	3.25"	2.25"	2.25"	2.25"	2.00"

Nomex Composite Cone
1" Teteron/Silk Dome Tweeter
1" Kapton Voice Coil
Butyl Rubber Surround
Nomex Spider Suspension
Quick Disconnect Terminals

ARACHNID

FULL RANGE

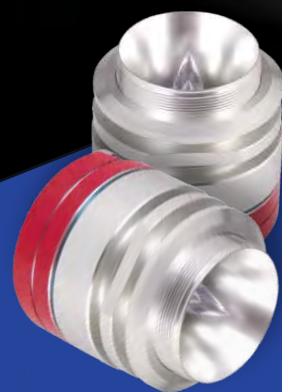


Polypropylene Injection Cone
NBR Rubber Surround
1" Voice Coil on Aluminum Former
Quick Disconnect Terminals
Conex Spider Suspension
2" Mylar Midrange (SF-693T)
1" Mylar Tweeter
Tarantula Speaker Grill Included
4-Ohm System Impedance

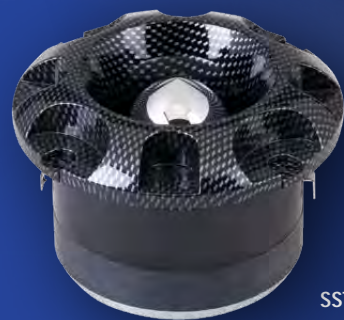
ARACHNID SPEAKERS	SF.693T	SF.652T	SF.573T	SF.502T	SF.402T
Size and Configuration	6" x 9" 3-way	6.5" 2-way	5" x 7" 3-way	5.25" 2-way	4" 2-way
RMS Power (watts)	100	60	60	50	40
Efficiency (1w/1m dB)	92.00	92.00	92.00	92.00	92.00
Mounting Depth	3.25"	1.75"	2.625"	2.25"	1.75"

PRO AUDIO

WWW.SOUNDSTREAM.COM



SST-05
(pair)



SST-20



SST-22



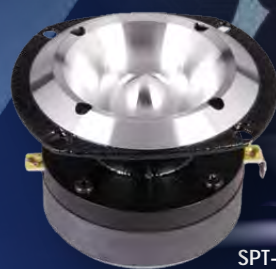
SPT-35



SPT-30



SPT-205



SPT-200



SPT-300



SPT-305



SPT-325

Pro Audio Tweeters	SST-05	SST-20	SST-22	SPT-30	SPT-35	SPT-200	SPT-205	SPT-300	SPT-305	SPT-325
MAX Power Handling	100w	90w	100w	100w	100w	70w	100w	70w	100w	140w
Diaphragm Size/Type	1" Aluminum	2" Aluminum	2" Aluminum	2" Composite	2" Composite	1" Aluminum	1.75" Aluminum	1" Aluminum	1.75" Aluminum	3" Aluminum
Impedance	4-Ohm	4-Ohm	4-Ohm	8-Ohm	4-Ohm	4-Ohm	8-Ohm	4-Ohm	4-Ohm	4-Ohm
Frequency Response	3kHz-20kHz	4kHz-20kHz	4kHz-20kHz	3kHz-20kHz	3kHz-20kHz	4kHz-20kHz	3kHz-20kHz	4kHz-20kHz	3kHz-20kHz	2.5Hz-20kHz
Efficiency (1w/1m)	109dB	105dB	107dB	105dB	107dB	103dB	105dB	105dB	107dB	109dB
Mounting Depth	1.5"-2"	2.25"	2.125"	2.25"	3.25"	2.25"	2.50"	2.25"	2.25"	4.00"



SCT.340



SCT.440



SCT.600



SMD.200



SMD.202

Compression Drivers	SCT.340	SCT.440	SCT.600	SMD.200	SMD.202
Type	Tweeter	Tweeter	Tweeter	Midrange	Midrange
Diaphragm Type	Titanium	Titanium	Titanium	Composite	Composite
MAX Power Handling	50w	65w	120w	100w	100w
Impedance	8-Ohm	8-Ohm	8-Ohm	4-Ohm	4-Ohm
Frequency Response	1.5kHz-20kHz	1.3kHz-20kHz	1kHz-20kHz	500-7KHz	500-7kHz
Efficiency (1w/1m)	104dB	107dB	108dB	106dB	108dB



SPH.100



SPH.300



SPH.400

Tweeter Horns	SPH.100	SPH.300	SPH.400
Size & Type	1" Screw-on	1" Screw-on	2" Bolt-on
Material	ABS	IMPP	Aluminum
Mounting Depth	2.75"	3.25"	4.75"

WWW.SOUNDSTREAM.COM

PRO AUDIO



SME.654
SME.658
SME.804
SME.808
SME.104



SME.654P



SME.574

SME.694



SMS.654
SMS.658
SMS.804
SMS.808
SME.104
SMS.108
Shallow Mount
Cast aluminum



SMC.654
SMC.804



SP2.694



SP2.654
SP2.658



SP2.804
SP2.808

SP2.104
SP2.108

2-WAY PRO
AUDIO SPEAKER
WITH COMPRESION
TWEETER!



PRO2.XVR
Crossover for all SP2
2-way Pro Audio Speakers
w/ Compression Tweeter

Neodymium	SM.654N	SM.804N
Size	6.5"	8"
MAX Power Handling	250w	350w
Impedance	4-Ohm	4-Ohm
Frequency Response	180-10kHz	135-8kHz
Efficiency (1w/1m)	97dB	98dB
Mounting Depth	2.75"	3.25"

Pro Audio Coaxial Driver	SP2.654 SP2.658	SP2.694	SP2.804 SP2.808	SP2.104 SP2.108
Size	6.5"	6"x9"	8"	10"
MAX Power Handling	225w	250w	300w	450w
Impedance	4 or 8-Ohm	4-Ohm	4 or 8-Ohm	4 or 8-Ohm
Frequency Response	150-8Khz	150-20kHz	140-6kHz	85-4.5kHz
Efficiency (1w/1m)	96dB	97db	98dB	99dB
Mounting Depth	3.125"	3.50"	3.50"	4.00"

Pro Audio Midrange Drivers	SME.654 SME.658	SM.654P	SME.574	SME.694	SME.804 SME.808	SME.104	SMS.654 SMS.658	SMS.804 SMS.808	SMS.104 SMS.108	SMC.654	SMC.804
Size	6.5"	6.5"	5"x7"	6"x9"	8"	10"	6.5"	8"	10"	6.5"	8"
MAX Power Handling	170w	170w	170w	185w	200w	350w	225w	300w	450w	330w	470w
Impedance	4 or 8-Ohm	4-Ohm	4-Ohm	4-Ohm	4 or 8-Ohm	4-Ohm	4 or 8-Ohm	4 or 8-Ohm	4 or 8-Ohm	4-Ohm	4-Ohm
Frequency Response	150-10kHz	150-10kHz	150-10kHz	120-8kHz	120-8kHz	100-5khz	150-6kHz	140-6kHz	85-4.5kHz	180-8kHz	150-6.5kHz
Efficiency (1w/1m)	96dB	96dB	96dB	97dB	98dB	98dB	96dB	98dB	98dB		
Mounting Depth	2.75"	2.75"	2.375"	3.25"	3.25"	4.25"	2.25"	2.75"	3.00"	3.25"	3.75"

TWEETERS

TWT.2

1" Horn Loaded Titanium Dome Tweeter

- Flush mount aluminum housing
- Ferro fluid cooled
- Neodymium magnet
- 12dB/Octave passive crossover included
- Rated Input Power: 120W
- Impedance: 4 ohm
- Freq. Resp. 3KHz - 22KHz
- SPL 94dB



TWT.5

1" PEI Dome Tweeter

- Surface or Angled Mounting
- 12dB Passive Crossover Included
- Rated Input Power: 110W
- Impedance: 4 ohm
- Freq. Resp. 2KHz-21KHz
- SPL 97dB



TWS.3N

1" PEI Dome Tweeter

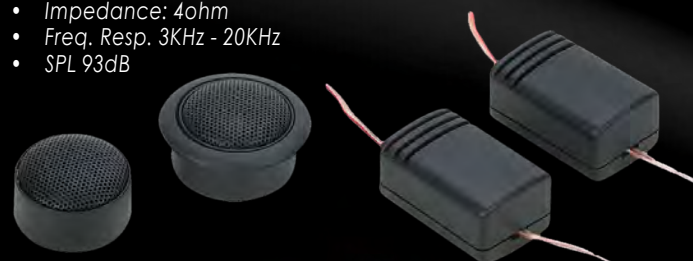
- Tri-Mounting - flush, surface or angle
- Adjustable eyeball design
- Built-in 12 dB In-Line Crossover
- Rated Input Power: 110W
- Impedance: 4 ohm
- Freq. Resp. 2KHz-21KHz
- SPL 94dB



TWS.1

1" Soft Dome Tweeter

- Ferrofluid cooled
- Neodymium magnet
- Tri-Mounting - flush, surface or angle
- 12dB/Octave passive crossover included
- Rated Input Power: 110W
- Impedance: 4ohm
- Freq. Resp. 3KHz - 20KHz
- SPL 93dB



TWT.6

1" Titanium Dome Tweeter

- Ferrofluid cooled
- Neodymium magnet
- Tri-Mounting - flush, surface or angle
- 12dB/Octave passive crossover included
- Rated Input Power: 110W
- Impedance: 4ohm
- Freq. Resp. 3KHz - 20KHz
- SPL 93dB



TWS.4

1" Tantalum Dome Tweeter

- Polished aluminum housing
- Dual-Mounting - surface or angle
- Built-in 12 dB In-Line Crossover
- Rated Input Power: 110W
- Impedance: 4 ohm
- Freq. Resp. 5KHz-25KHz
- SPL 95dB



EQUALIZERS

MPQ-7B

1/2 DIN 7-Band Graphic EQ w/ Subwoofer Level Control

- 30V Bipolar Switching Power Supply
- 20dB Headroom Eliminated Signal Overload
- 2 Selectable Balanced RCA Inputs w/ Input gain
- Front, Rear, & Subwoofer RCA Outputs
- Seven Frequency Bands with +/- 18db Boost/Cut
- 40Hz, 100Hz, 275Hz, 700Hz, 2kHz, 5kHz, 14kHz
- Independent Subwoofer Level Control
- Selectable Low-Pass Filter: 32Hz, 64Hz, 125Hz
- Input Selector Switch
- Fade Control
- Blue Backlit Control Knobs
- S/N Ratio: 115dB
- THD: 0.05%
- Stereo Separation: 82dB
- Frequency Response: 10Hz-15kHz
- Max Output Voltage: 8V



MPQ-7XO

1/2 DIN Dual Channel Multi-Band Graphic EQ

- 20dB Headroom Switching Power Supply
- Built-in Low Noise Bi-FET Op-Amps
- 2 Selectable Balanced RCA Inputs w/ Input Gain
- Front, Rear, & Subwoofer RCA Outputs
- Four 18dB Front Bands 125Hz; 500Hz; 3.5kHz; 12kHz
- Three 18dB Rear Bands 50Hz; 600Hz; 6.3kHz
- Variable 18dB Bass Boost; 20-70Hz
- Independent Subwoofer Level Control
- Selectable Subsonic Filter; 32Hz; 64Hz; 125Hz
- Fade Control
- Blue Backlit Control Knobs
- Frequency Response: 10-100kHz

- Output Signal Voltage Up To 8V
- THD: .05%
- Signal-to-Noise Ratio: 115dB
- 7" w x 4.25" d x 1.125" h



MPQ-5XO

1/2 DIN 3-Band Parametric EQ w/ Subwoofer Level Control

- 20dB Headroom Switching Power Supply
- Built-in Low Noise Bi-FET Op-Amps
- 2 Selectable Balanced RCA Inputs w/ Variable Input Gain
- Front, Rear, & Subwoofer RCA Outputs
- 3 Variable Bandwidths: 18dB of Equalization
- 150-400Hz (Bass); 1.5-4kHz (Mid); 4-20kHz (High)
- Variable 18dB Bass Boost; 20-70Hz
- Independent Subwoofer Level Control
- Variable Subsonic Filter; 50-250Hz
- Fade Control
- Blue Backlit Control Knobs
- Frequency Response: 10-100kHz

- Output Signal Voltage Up To 10V
- THD: .005%
- Signal-to-Noise Ratio: 110dB
- 7" w x 3.625" d x 1.125" h



MPQ-4US

1/2 DIN 4-Band Graphic Equalizer w/ SD & USB Input

- On-Board USB/SD/MMC Input & Control
- 2 Selectable Balanced RCA Inputs
- Optional High Level Input
- Variable Input Sensitivity
- Front, Rear, & Subwoofer RCA Outputs
- 4-Band 18dB Equalizer (50Hz, 210Hz, 1kHz, 20kHz)
- Independent Subwoofer Level Control
- Variable Subwoofer Low-Pass Crossover
- Fade Control
- Blue Backlit Control Knobs
- Frequency Response: 10Hz-25kHz
- THD: .05%
- Stereo Separation: 85dB
- Signal-to-Noise Ratio: 110dB
- 7" w x 4.375" d x 1.125" h



BASS PROCESSORS

BX-22i Digital Bass Reconstruction Processor

High Tolerance SMD Technology
All Aluminum Chassis
Parametric Bass Equalizer
Variable Frequency Sweep
Variable Q Width
Variable PWM Subsonic Filter
Low Level RCA Input
Low Level RCA Output
Signal Sense Remote Turn-on
Optional Remote Turn-On Input
MAX Output Level: 13.5 volt



BX-20Z Digital Bass Reconstruction Processor

Max Bass Control
Dash Mount Remote Control
PFM Subsonic Filter & Bass Level Control
Illuminated logo and knobs
Chrome Logo Plate
Bass Restoration Lighted Display
Parametric Bass Control
PFM Subsonic Filter
Balanced Inputs
Bass Output Control
PWM High Head Room Power Supply
Output Level: 13.5 volt
Frequency Response: 10Hz 100KHz
THD: 0.002%
S/N Ratio: 132dB
Balanced Input Noise Rejection: 60 dB



BX-15 Digital Bass Reconstruction Processor

Max Bass Control
PWM High Head Room Power Supply
Balanced Input Noise Rejection: 60 dB
Frequency Response: 10Hz 100KHz
Dash Mount Remote Control
PFM Subsonic Filter & Bass Level Control
Illuminated logo and knobs
Brushed Aluminum Case & Handles

Bass Restoration Lighted Display
Parametric Bass Control
PFM Subsonic Filter
Balanced Inputs
Bass Output Control
Output Level: 13.5 volt
THD: 0.002%
S/N Ratio: 132dB



BASS PROCESSORS

BX-12 Digital Bass Reconstruction Processor

Max Bass Control
PWM High Head Room Power Supply
Frequency Response: 10Hz 100KHz
Dash Mount Remote Control
Bass Restoration Lighted Display
Parametric Bass Control
PFM Subsonic Filter
Balanced Inputs
Bass Output Control
Output Level: 13.5 volt
THD: 0.003%
S/N Ratio: 130dB
Balanced Input Noise Rejection: 60 dB



BX-10X Digital Bass Reconstruction Processor

Max Bass Control
PWM High Head Room Power Supply
Frequency Response: 10Hz 100KHz
Dash Mount Remote Control
Bass Restoration Lighted Display
Parametric Bass Control
PFM Subsonic Filter
Balanced Inputs
Bass Output Control
Output Level: 13.5 volt
THD: 0.003%
S/N Ratio: 130dB
Balanced Input Noise Rejection: 60 dB



BX-10 Digital Bass Reconstruction Processor

Max Bass Control
PWM High Head Room Power Supply
Frequency Response: 10Hz 100KHz
Dash Mount Remote Control
Bass Restoration Lighted Display
Parametric Bass Control
PFM Subsonic Filter
Balanced Inputs
Bass Output Control
Output Level: 13.5 volt
THD: 0.003%
S/N Ratio: 130dB
Balanced Input Noise Rejection: 60 dB



POWER MANAGEMENT

SCX-2
2 Farad Power Capacitor
SCX-4
4 Farad Power Capacitor

- 12-16 DC Input Voltage
- Blue LED Voltage Display
- Chrome Plated Chassis
- Bolt Post for Ring Terminal



SC-8F
8 Farad Power Capacitor
SC-15F
15 Farad Hybrid Power Capacitor

- 12-16 DC Input Voltage
- Blue LED Voltage Display
- 0ga Power Input w/ 4ga Reducer



SC-40CA
40 Farad Hybrid Super Capacitor



SC-20CA
20 Farad Hybrid Super Capacitor



- 12-16 DC Input Voltage
- Extruded Aluminum Housing
- Volt & Amperage Meter
- PCB with Blue LED Display
- Charging Status Indicator
- 24 Status LEDs
- Delayed Amp Turn-on
- 0 ga Input and 4 ga output

SCX-1.5
1.5 Farad Power Capacitor

- 12-16 DC Input Voltage
- Red LED Voltage Meter
- Bolt Post for Ring Terminal



AMPLIFIER INSTALLATION

Complete D.I.Y. Installation Kits

WK-2G
2AWG Installation Kit w/ 100A ANL Fuse

WK-4G
4AWG Installation Kit w/ 80A M-ANL Fuse

WK-44G
4AWG 4ch. Installation Kit w/ 80A M-ANL Fuse

WK-8G
8AWG Installation Kit w/ 60A AGU Fuse

All Installation Kits Include:

- 17ft Translucent Black Power Wire
- 3ft Translucent Clear Ground Wire
- 25ft Twisted Pair Speaker Wire
- 40ft Twisted Pair Speaker Wire (WK-44G)
- 1pc. 17ft Twisted Pair RCA Interconnect Cable
- 2pcs 17ft Twisted Pair RCA Interconnect Cable (WK-44G)
- 17ft Translucent Black Remote Turn-on Wire
- Fuse Holder w/ Appropriate Fuse
- Complete Installation Accessories



Bulk Wire Rolls & Individual Accessories

Power/Ground Wire

- WR-0B 50 ft. 0AWG Black
- WR-0C 50 ft. 0AWG Clear
- WR-4B 100 ft. 4AWG Black
- WR-4C 100 ft. 4AWG Clear
- WR-8B 300 ft. 8AWG Black
- WR-8C 300 ft. 8AWG Clear

Speaker Wire

- WRS-12 300 ft. 12ga Black/Clear
- WRS-16 100 ft. 16ga 5-Conductor

Twisted Pair RCA Interconnect

- WRCA-3 3 ft.
- WRCA-6 6 ft.
- WRCA-12 12 ft.
- WRCA-17 17 ft.
- WRCA-21 21 ft.

In-Line Fuse Holders

- WFH-0 0AWG w/ 120A M-ANL Fuse
- WFH-4 4AWG w/ 80A M-ANL Fuse
- WFH-8 8AWG w/ 60A AGU Fuse



INGENIX SOURCE UNITS

Soundstream INGENIX powered source units use a proprietary engine featuring 800 MHz CPU processor & WIN CE 6.0 operating system. Commonly found in compact netbooks, such lightning fast function processing has not been possible in an aftermarket automotive multimedia system, until now. INGENIX programming brings unique feature applications to your fingertips.



Go ahead, take a second look....

The primary menu of the INGENIX source units has an appeal that you might expect only from a computer. The LED back light Full HD quality 800x480 screen resolution yields a crisp image. Drag any mode application icon from the slide menu at the bottom of the screen and drop it onto the desktop as a shortcut. Utilize the drop down widget menu for quick settings access. The main menu background and brightness settings can be set to change automatically at night. There's even a scrolling marquee banner displaying your short message.



Built-in GPS Navigation

All Ingenix powered source units come standard with GPS turn-by-turn navigation for USA & Canada (other countries available). Set your destination and enjoy text-to-speech directions with lane guidance. Additional features include favorites list, programmable home destination, destination fuel estimates, multi-lingua, multi-gender voices, speed limit warnings, and more. Maps and POI data by TomTom.



Picture-in-Picture

INGENIX is the first to bring the Picture-in-Picture function into the car. PIP allows uninterrupted video playback while simultaneously viewing the GPS navigation map in real time, as it happens. The picture can be re-sized and positioned to 3 different ratios.



Full iPod Control Integration (requires IP-5C)

Scroll through your iPhone, iPod Touch, Classic, or Nano to find your favorite tracks. Search options include by Album, Artist, Genre, Playlist, or entire track list. Jump through lists by first alpha character scrolling.



Bluetooth V2.1 + EDR Connectivity

Bluetooth V2.1 with Enhanced Data Rate increases data transfer rates to 2.1 Mbit/s. This lightning quick information transfer increases clarity & virtually eliminates unwanted distortion during calls and wireless MP3 audio playback. Most Bluetooth enabled Smartphones will transfer phone book contacts, view recent call logs, and stream MP3 audio tracks.

ADDITIONAL FEATURES

Dual Zone for Rear Seat or Overhead Entertainment
Adjustable Video Output Screen Ratio & Image Positioning
Utility Application w/ Memo Pad, Calculator, Calendar, Car Maintenance, Texas Hold 'em Poker, & World Clock
4V Front, Rear & Subwoofer Pre-amp Output
Front Panel 3.5mm AUX A/V Input
A/V Input from Auxiliary Source
Rear View Camera RCA Input w/ Trigger

Accepts Axxess Steering Wheel Interface
JPG, BMP, & GIF Photo Browser
Upload Custom Screen Savers
Remote Control Sold Separately
Digital & Analog TV Tuners Available
NTSC/PAL Video Playback
50W x 4 MOSFET Speaker Outputs
400NIT Panel Brightness

INGENIX SOURCE UNITS



Digital Signal Processing

DSP features include a digital 5-band equalizer w/ 9 factory presets & 2 custom presets, real time analyzer, individual source level adjustment, variable subwoofer level control w/ low pass crossover, and sound staging controls.



32GB SDHC & USB 2.0 Reader

Playback MP3, WAV, FLAC, & AC3 audio files, or MP4, WMV, DivX, & XviD video files from up to a 32GB SDHC card or USB 2.0 mass storage device. Artwork transfers from enabled device, if available. INGENIX units will read files from a USB powered portable hard drive, up to 250GB capacity.



Streaming Bluetooth Music (A2DP)

Pair your Bluetooth enabled cell phone, Smartphone, iPhone, or iPod Touch for wireless MP3 playback. Use the touch screen controls for basic operations.



Multimedia File Manager

Sort, view, play, move, or delete your multimedia & data files. No longer will you need a computer on the go to manage your USB/SD/HDD Mass Storage devices.



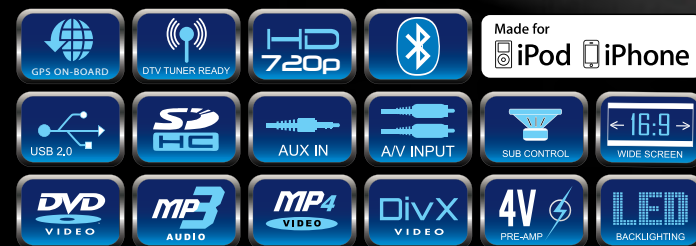
Speedometer & Compass

Are larger wheels and tires throwing off your speedometer? Can't figure which direction you're driving? Utilize the GPS based real-time speedometer and directional compass to help out. Even set them as the screen saver for constant viewing.



SNX-771

Double Din INGENIX AVN Source Unit w/ Digital 7" LCD Touch Screen

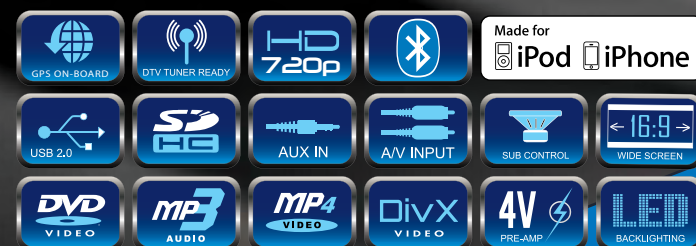


Motorized 7" LCD w/ Preset Angle Adjustment
Noise Rejecting Copper Electroplated Chassis
Complete Ingenix Operating System
TomTom Turn-by-Turn GPS Navigation System
Playback from DVDR/RW or CDR/RW of MP3, MP4, & DivX
Playback From 32GB SD Card or USB of MP3, MP4, & DivX
Bluetooth V2.1+EDR Hands Free Calling from Phone
A2DP MP3 Audio Playback from Enabled Device
Complete iPod Integration with IP-5C
RCA A/V Input from Multiple Source Integrator
AUX A/V Input from Personal Media Devices
Dual Zone for Rear Seat or Overhead Devices
Accepts Axxess Steering Wheel Module
Rear View Camera Input w/ Trigger
5-Band Variable EQ w/ Presets, & Crossovers
4V Pre-amp Front, Rear & Subwoofer Outputs
52wx4 MOSFET Speaker Outputs
Multi-Region FM Frequency Stepping
Remote Control Sold Separately
800 x 480 Widescreen Resolution
400NIT LED Backlight Brightness



SNX-731

Single Din INGENIX AVN Source Unit w/ Detachable Digital 7" LCD Touch Screen



Motorized 7" LCD w/ Preset Angle Adjustment
Noise Rejecting Copper Electroplated Chassis
Complete Ingenix Operating System
TomTom Turn-by-Turn GPS Navigation System
Playback from DVDR/RW or CDR/RW of MP3, MP4, & DivX
Playback From 32GB SD Card or USB of MP3, MP4, & DivX
Bluetooth V2.1+EDR Hands Free Calling from Phone
A2DP MP3 Audio Playback from Enabled Device
Complete iPod Integration with IP-5C
RCA A/V Input from Multiple Source Integrator
AUX A/V Input from Personal Media Devices
Dual Zone for Rear Seat or Overhead Devices
Accepts Axxess Steering Wheel Module
Rear View Camera Input w/ Trigger
5-Band Variable EQ w/ Presets, & Crossovers
4V Pre-amp Front, Rear & Subwoofer Outputs
52wx4 MOSFET Speaker Outputs
Multi-Region FM Frequency Stepping
Remote Control Sold Separately
800 x 480 Widescreen Resolution
400NIT LED Backlight Brightness



OEM Upgrade Systems Include:
Complete Ingenix Operating System
Applicable Dash Trim Kit
8" LCD Touch Screen 800 x 480 Resolution
Navteq Turn-by-Turn GPS Navigation
Bluetooth V2.1+EDR & A2DP for Streaming MP3
Full iPod Integration w/ Touch Screen Control
16GB USB 2.0 & SDHC Reader Module
Touch Screen Control of VDVD-165/VDVD-210 DVD Player (not included)
Retains all OEM information, CD playback, RDS, & Climate Control Functions

2008~2011 Honda Accord EX/LX
S-81ACRD



Before

After

2011~2012 Kia Optima
S-86OPTM



After

Before

2011~2012 Hyundai Elantra
S-85ELTR



After

Before

2011 Hyundai Sonata S-84SNTA11
2012 Hyundai Sonata S-84SNTA12



Before

After

TV-AN (analog multi system)
TV-DVB-T
TV-DVB-H
TV-ISDB-T
TV-T-DMB
TV-CMMB
TV Tuner for Ingenix Powered Source Units Only



REM-5
Remote Control for INGENIX
Powered Source Units



IP-5C
Full Control iPod Cable for
INGENIX Powered Source Units

Full Control of iPod Classic, iPhone, Nano, & iTouch
Charging of all Compatible iPod Models
Scroll by Artists, Albums, Genres, or Playlists
Video Playback from Classic & iTouch





inteq
technology

SOURCE UNITS



Interface for iPod

Control and charge your iPod or iPhone via Inteq's touch screen for hours of audio & video entertainment. Scroll through and select individual tracks and Playlists, or search by Artist, Album or Genre. Requires IC-3, sold separately.



Media Player

Play audio, video, and picture files through Inteq from a 32GB SD card or USB flash drive. Supports MP3, WAV & FLAC audio files, MP4, DivX, MKV, FLV, & MOV video files, and JPG pictures.



Ready for GPS Navigation

All Inteq source units are ready for GPS turn-by-turn navigation via NAVIBOX-2, powered by Navteq (sold separately). Set your destination to one of 12 million USA & Canada Points of Interest. Additional features include programmable destinations & selectable languages.



Drag-N-Drop Widget Menu

Place mode application icons on the desktop from the widget menu for quick short-cuts. Any mode or settings menus can drag-n-drop from the widget menu.



Hands-Free Calling & Media Playback with Bluetooth V2.1+EDR

Bluetooth V2.1 with Enhanced Data Rate increases data transfer rates to 2.1 Mbit/s. This lightning quick information transfer increases clarity & virtually eliminates unwanted distortion during calls and wireless MP3 audio playback. Most Bluetooth enabled Smartphones will transfer phone book contacts, view recent call logs, and stream MP3 audio tracks.



Digital Media Drive

Enjoy your favorite DVD rental, or playback your own MP3/WAV audio tracks and MP4/DivX videos from any DVDR/RW or CDR/RW disc with Inteq's Digital Media Drive.



Programmable FM/AM Tuner

Inteq's FM/AM receiver allows 18FM station memory and 12AM stations. Recall any favorite station with one simple touch.



Made for
iPod iPhone

AVAILABLE ACCESSORIES

inteq
technology

NAVIBOX-2

Plug-N-Play Turn-By-Turn GPS Navigation Module



Works with all Inteq Powered Source Units
Commanded by Source Unit Touch Screen Controls
Navteq USA & Canada Mapping w/ 12 Million POI Database
Windows CE 5.0 Operating System
500MHz Atlas Processor for Immediate Calculation
Navigate to Destinations by Address, POI Search, or Favorites List
Programmable Home and Office Destinations
Choice of Quickest or Shortest Route
Remaining Time & Distance to Location Calculation
Metric or USA Units of Measure
Text-To-Speech for Most Major Highways
Multi-Language & Male, Female, Southern & Urban Accents
2D & 3D Visual Configurations
Automatic Day & Night Illumination
Dimensions: 4.1" x 4.2" x 1"

DTV-3

Universal or Direct Control DTV Tuner



Touch Screen Control from All Inteq Powered Source Units
Windshield Mount Antenna Included
Full DTV-MH 57-803MHz Receiving Frequencies
Electronic Programming Guide
Favorite Channels Programming
CCD Closed Captions Optional
OSD Language Options: English, Spanish, & French
4:3 or 16:9 Aspect Ratio
SDTV 720P Video Signal

KS-1

Desktop Media Player for Select Inteq Models

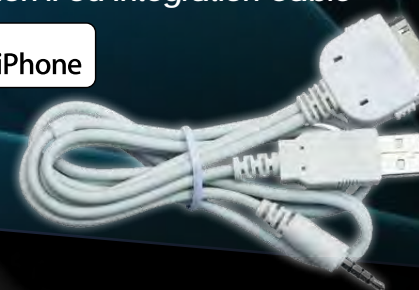


KS-1 is a desktop media player dock for select Inteq source units. Your Inteq source unit faceplate docks with KS-1, activating the SD & USB playback functions. Sound is produced by built-in rear panel speakers or via earphone output, while videos are displayed on-screen. A built-in kickstand with adjustable positioning allows for easy angled viewing. AC power adapter included.

IC-3

Full Function iPod Integration Cable

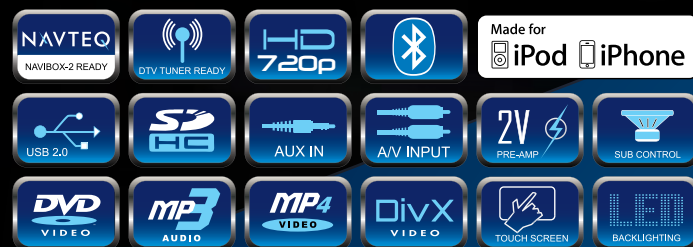
Made for
iPod iPhone



Full Control & Charging of All Generation iPod Classic, Nano, & iTouch
Scroll by Artist, Album, Genre, or Playlist
Video Playback from Classic & iTouch
Compatible with Inteq Powered Source Units Only

VR-769NB

Double DIN Inteq Multimedia Source Unit w/ Detachable 7" LCD Touch Screen



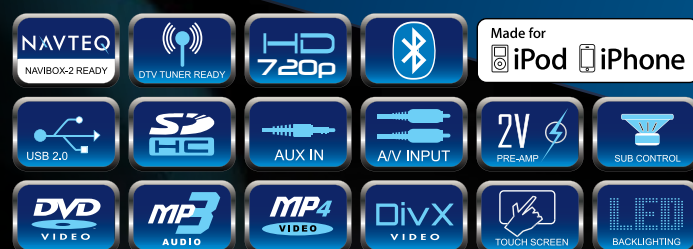
Detachable Motorized 2-DIN 7" LCD
Playback from DVDR/RW or CDR/RW of MP3, MP4, & DivX
Playback From 32GB SD Card or USB of MP3, MP4, & DivX
Bluetooth V2.1+EDR Hands Free Calling from Phone
A2DP MP3 Audio Playback from Enabled Device
AUX A/V Input for Personal Media Devices
Accepts Axxess Steering Wheel Module
Complete iPod Integration with IC-3
Rear View Camera Input w/ Trigger

52wx4 MOSFET Speaker Outputs
Multi-Region FM Frequency Stepping
800 x 480 Widescreen Resolution
400NIT LED Backlight Brightness



VR-652NB

Double DIN Inteq Multimedia Source Unit w/ 6.5" LCD Touch Screen



Playback from DVDR/RW or CDR/RW of MP3, MP4, & DivX
Playback From 32GB SD Card or USB of MP3, MP4, & DivX
Bluetooth V2.1+EDR Hands Free Calling from Phone
A2DP MP3 Audio Playback from Enabled Device
AUX A/V Input for Personal Media Devices
Accepts Axxess Steering Wheel Module
Complete iPod Integration with IC-3
Rear View Camera Input w/ Trigger

52wx4 MOSFET Speaker Outputs
Multi-Region FM Frequency Stepping
800 x 480 Widescreen Resolution
400NIT LED Backlight Brightness



VR-750NB VR-750NBT (w/ Analog TV Tuner)

Single DIN Inteq Multimedia Source Unit w/ Flip-up 7" LCD Touch Screen



Motorized Telescoping & Angle Adjustment
Detachable Theft Deterrent Front Panel
Playback from DVDR/RW or CDR/RW of MP3, MP4, & DivX
Playback From 32GB SD Card or USB of MP3, MP4, & DivX
Bluetooth V2.1+EDR Hands Free Calling from Phone
A2DP MP3 Audio Playback from Enabled Device
AUX A/V Input for Personal Media Devices
Accepts Axxess Steering Wheel Module
Complete iPod Integration with IC-3
Rear View Camera Input w/ Trigger
Multi-Region FM Frequency Stepping
52wx4 MOSFET Speaker Outputs
800 x 480 Widescreen Resolution
400NIT LED Backlight Brightness



VR-931NB

VR-931NBT (w/ Analog TV Tuner)

Single DIN Inteq Multimedia Source Unit w/ Detachable 9.3" LCD Touch Screen



Detachable Motorized Faceplate w/ Angle Adjustment
iGlass Touch Screen Technology Panel
Accepts Optional KS-1 Desktop Media Player
Playback from DVDR/RW or CDR/RW of MP3, MP4, & DivX
Playback From 32GB SD Card or USB of MP3, MP4, & DivX
Bluetooth V2.1+EDR Hands Free Calling from Phone
A2DP MP3 Audio Playback from Enabled Device
AUX A/V Input for Personal Media Devices
Angled AUX-In & USB Adapter Included
Accepts Axxess Steering Wheel Module
Complete iPod Integration with IC-3
Rear View Camera Input w/ Trigger
Extended Sleeve & Trim Ring Included
52wx4 MOSFET Speaker Outputs
Multi-Region FM Frequency Stepping
Padded Carry Case Included
800 x 480 Widescreen Resolution
400NIT LED Backlight Brightness



Optional KS-1 Desktop Media Player

VR-738NB

VR-738NBT (w/ Analog TV Tuner)

Single DIN Inteq Multimedia Source Unit w/ Detachable 7" LCD Touch Screen



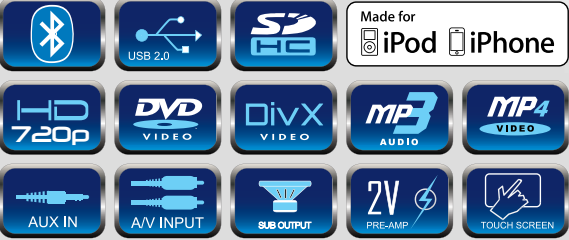
Detachable Motorized Faceplate w/ Angle Adjustment
iGlass Touch Screen Technology Panel
Accepts Optional KS-1 Desktop Media Player
Playback from DVDR/RW or CDR/RW of MP3, MP4, & DivX
Playback From 32GB SD Card or USB of MP3, MP4, & DivX
Bluetooth V2.1+EDR Hands Free Calling from Phone
A2DP MP3 Audio Playback from Enabled Device
AUX A/V Input for Personal Media Devices
Angled AUX-In & USB Adapter Included
Accepts Axxess Steering Wheel Module
Complete iPod Integration with IC-3
Rear View Camera Input w/ Trigger
Extended Sleeve & Trim Ring Included
52wx4 MOSFET Speaker Outputs
Multi-Region FM Frequency Stepping
Padded Carry Case Included
800 x 480 Widescreen Resolution
400NIT LED Backlight Brightness



Optional KS-1 Desktop Media Player

MULTIMEDIA SOURCE UNITS

VIR-7832Bi (w/ Bluetooth V2.0)
VIR-7832Ti (w/ Analog TV Tuner)
Single Din Multimedia Source Unit
w/ 7" Flip-Up LCD Touch Screen



Motorized Angle Adjustment
Detachable Theft Deterrent Front Panel
Playback from DVDR/RW or CDR/RW of MP3, MP4, & DivX
Playback From 32GB SD Card or USB of MP3, MP4, & DivX
AUX A/V Input for Personal Media Devices
Bluetooth V2.0 Hands Free Calling from Enabled Device
A2DP MP3 Audio Playback from Enabled Device
Complete iPod Integration w/ Included Cable
Dual Zone for Rear Seat or Overhead Entertainment
Programable Open or Closed Positioning After Use
ID3 Tag Reading for Track & Artist Information
Rear View Camera Input w/ Trigger
52w x 4 MOSFET Speaker Outputs
Multi-Region FM Frequency Stepping
480 x 234 Widescreen Resolution
400 NIT LED Brightness



VR-650B (w/ Bluetooth V2.0)
Double DIN Multimedia Source Unit w/ Motorized 6.5" LCD Touch Screen



Motorized Angle Adjustment
Playback from DVDR/RW or CDR/RW of MP3, MP4, & DivX
Playback From 32GB SD Card or USB of MP3, MP4, & DivX
Bluetooth V2.0 Hands Free Calling from Enabled Device
A2DP MP3 Audio Playback from Enabled Device
AUX A/V Input for Personal Media Devices
ID3 Tag Reading for Track & Artist Information
Rear View Camera Input w/ Trigger
Fixed 80Hz Subwoofer Output
52w x 4 MOSFET Speaker Outputs
Multi-Region FM Frequency Stepping
480x272 Widescreen Resolution
500 NIT LED Brightness



VR-732
VR-732B (w/ Bluetooth V2.0)
Single DIN Multimedia Source Unit w/ Motorized Detachable 7" LCD Touch Screen



Motorized Angle Adjustment
Theft Deterrent Detachable Faceplate
Playback from DVDR/RW or CDR/RW of MP3, MP4, & DivX
Playback From 32GB SD Card or USB of MP3, MP4, & DivX
Bluetooth V2.0 Hands Free Calling from Enabled Device
A2DP MP3 Audio Playback from Enabled Device
AUX A/V Input for Personal Media Devices
ID3 Tag Reading for Track & Artist Information
Rear View Camera Input w/ Trigger
Extended Sleeve & Trim Ring Included
Fixed 80Hz Subwoofer Output
52w x 4 MOSFET Speaker Outputs
Multi-Region FM Frequency Stepping
800 x 480 Widescreen Resolution
400 NIT LED Brightness



VR-730
VR-730B (w/ Bluetooth V2.0)
Single DIN Multimedia Source Unit w/ Detachable 7" LCD Touch Screen



Theft Deterrent Detachable Faceplate
Playback from DVDR/RW or CDR/RW of MP3, MP4, & DivX
Playback From 32GB SD Card or USB of MP3, MP4, & DivX
Bluetooth V2.0 Hands Free Calling from Enabled Device
A2DP MP3 Audio Playback from Enabled Device
AUX A/V Input for Personal Media Devices
ID3 Tag Reading for Track & Artist Information
Rear View Camera Input w/ Trigger
Extended Sleeve & Trim Ring Included
Fixed 80Hz Subwoofer Output
52w x 4 MOSFET Speaker Outputs
Multi-Region FM Frequency Stepping
480 x 234 Widescreen Resolution
400 NIT LED Brightness



VIR-7830
VIR-7830B (w/ Bluetooth V2.0)
VIR-7830T (w/ Analog TV Tuner)
VIR-7830BT (w/ Bluetooth V2.0 & Analog TV Tuner)
Single Din Multimedia Source Unit
w/ 7" Flip-Up LCD Touch Screen



Motorized Angle Adjustment
Detachable Theft Deterrent Front Panel
Playback from DVDR/RW or CDR/RW of MP3, MP4, & DivX
Playback From 32GB SD Card or USB of MP3, MP4, & DivX
AUX A/V Input for Personal Media Devices
Bluetooth V2.0 Hands Free Calling from Enabled Device
A2DP MP3 Audio Playback from Enabled Device
Dual Zone for Rear Seat or Overhead Entertainment
Programable Open or Closed Positioning After Use
ID3 Tag Reading for Track & Artist Information
Rear View Camera Input w/ Trigger
52w x 4 MOSFET Speaker Outputs
Multi-Region FM Frequency Stepping
480 x 234 Widescreen Resolution
400 NIT LED Brightness



VR-535B (w/ Bluetooth V2.0)
VR-535T (w/ Analog TV Tuner)
Single DIN Multimedia Source Unit w/ Detachable 5.3" LCD Touch Screen



Motorized Angle Adjustment
 Theft Deterrent Detachable Faceplate
 Playback from DVDR/RW or CDR/RW of MP3, MP4, & DivX
 Playback From 32GB SD Card or USB of MP3, MP4, & DivX
 AUX A/V Input for Personal Media Devices
 ID3 Tag Reading for Track & Artist Information
 Fixed 80Hz Subwoofer Output
 52w x 4 MOSFET Speaker Outputs
 Multi-Region FM Frequency Stepping
 480x272 Widescreen Resolution
 400 NIT LED Brightness

VR-450
VR-450T (w/ Analog TV Tuner)
Single DIN Multimedia Source Unit w/ Detachable 4.5" LCD Touch Screen



Theft Deterrent Detachable Faceplate
 Playback from DVDR/RW or CDR/RW of MP3, MP4, & DivX
 Playback From 32GB SD Card or USB of MP3, MP4, & DivX
 AUX A/V Input for Personal Media Devices
 ID3 Tag Reading for Track & Artist Information
 Rear View Camera Input w/ Trigger
 Fixed 80Hz Subwoofer Output
 52w x 4 MOSFET Speaker Outputs
 Multi-Region FM Frequency Stepping
 480x243 Widescreen Resolution
 400 NIT LED Brightness

VR-345
VR-345T (w/ Analog TV Tuner)
Single DIN A/V Source Unit w/ Detachable 3.4" LCD Screen



Theft Deterrent Detachable Faceplate
 Playback from DVDR/RW & CDR/RW of MP3, MP4, & DivX
 Playback from 32GB SD Card or USB of MP3, MP4, & DivX
 AUX Audio Input for Personal Media Devices
 ID3 Tag Reading for Track & Artist Information
 Audio & Video RCA Outputs
 Fixed Subwoofer RCA Output
 52w x 4 MOSFET Speaker Outputs
 Multi-Region FM Frequency Stepping
 720x420 Widescreen Resolution
 400 NIT LED Brightness

AFTERMARKET OEM INTEGRATION

OEM in-vehicle technologies have advanced significantly in recent years. As more vehicles land on showroom floors with advanced network systems, the ability to integrate aftermarket source units has become essential. Soundstream is excited to partner with Farenheit and introduce its series of aftermarket OEM integration modules & universal steering wheel control interface. Communication, safety, and convenience features that otherwise would be lost are retained while enjoying added aftermarket entertainment. All modules are pre-fitted with Soundstream source unit and vehicle make/model specific wire harnesses, creating plug-n-play installation for all Ingenix, Inteq, & multimedia receivers. Visit Soundstream.com for complete vehicle application guides.



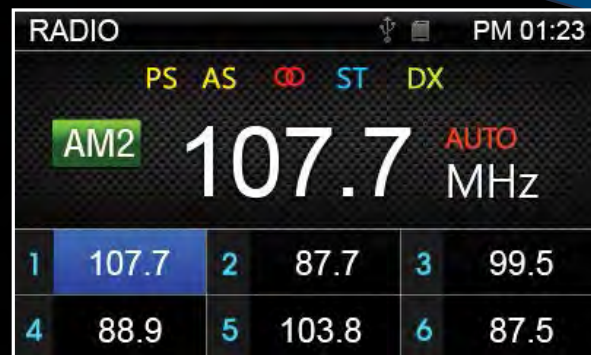
- | | |
|----------------|--|
| DRC-1 | Universal steering wheel control interface for select GM, Chrysler, Ford & Toyota vehicles |
| GM-2 | Select 2000+ General Motors vehicles w/ Class 2 data system |
| GM-20S | Select 2000+ General Motors vehicles w/ Class 2 data system & OnStar |
| GM-11 | Select 2005+ General Motors vehicles w/ LAN 11-bit data system |
| GM-110S | Select 2005+ General Motors vehicles w/ LAN 11-bit data system & OnStar |
| GM-29 | Select 2005+ General Motors vehicles w/ LAN 29-bit data system |
| GM-290S | Select 2006+ General Motors vehicles w/ LAN 29-bit data system & OnStar |
| CH-1 | Select 2005+ Chrysler, Dodge, & Jeep vehicles w/ premium entertainment system |
| TOY-1 | Select 2003+ Toyota & Lexus vehicles w/ premium entertainment system |
| FRD-1 | Select 2004+ Ford, Lincoln, & Mercury vehicles w/ CAN Bus system |

DIGITAL MEDIA RECEIVERS



Media Player

Play audio, video, and picture files from a 32GB SD card or USB flash drive. Supports MP3 & WAV audio files; MP4, DivX, & AVI video files. Also features a .JPG picture viewer.



Programmable FM/AM Tuner

The FM/AM receiver of all DMRs allow 18FM station memory and 12AM stations. Recall your favorite station with a simple press of a button or knob turn.



Digital Signal Processing

DSP features include a digital 2-band equalizer w/ 7 factory pre-sets, a custom preset, and sound staging controls. Each DMR offers Low Level RCA audio outputs.

SDR-656 Double DIN Digital Media Receiver w/ 6.5" LCD Touch Screen



Playback from up to 32GB SD/MMC Card or USB Flash Drive
720p HD Video Playback of MP4, DIVX, AVI & More
Audio Playback of MP3, AAC, AC3, & WMA
Picture Viewer of JPEG, PNG & GIF
ID3 Tag Reading for Track & Artist Information
AUX Audio Input for Personal Media Devices
18 FM / 12 AM Station Memory
52w x 4 MOSFET Powered Speaker Level Outputs
1 Set of Low-Level RCA Audio Outputs
Custom Audio Staging & EQ Controls
Multi-Region FM/AM Frequency Stepping
480x272 HD Resolution w/ 400cd/m2 Brightness
4" Mounting Depth



SDR-782 PDR-782T (w/ Analog TV Tuner) Single DIN Digital Media Receiver w/ Flip-up 7" LCD Touch Screen



Motorized Telescoping & Angle Adjustment
Detachable Theft Deterrent Front Panel
Playback from up to 32GB SD/MMC Card or USB Flash Drive
720p HD Video Playback of MP4, DIVX, AVI & More
Audio Playback of MP3, AAC, AC3, & WMA
Picture Viewer of JPEG, PNG & GIF
ID3 Tag Reading for Track & Artist Information
AUX Audio Input for Personal Media Devices
18 FM / 12 AM Station Memory
52w x 4 MOSFET Powered Speaker Level Outputs
1 Set of Low-Level RCA Audio Outputs
Custom Audio Staging & EQ Controls
Multi-Region FM/AM Frequency Stepping
800x480 HD Resolution w/ 400cd/m2 Brightness
4" Mounting Depth



SDR-762 SDR-762T (w/ Analog TV Tuner) Single DIN Digital Media Receiver w/ Detachable 7" LCD Touch Screen



Detachable Motorized Faceplate w/ Angle Adjustment
Playback from up to 32GB SD/MMC Card or USB Flash Drive
720p HD Video Playback of MP4, DIVX, AVI & More
Audio Playback of MP3, AAC, AC3, & WMA
Picture Viewer of JPEG, PNG & GIF
ID3 Tag Reading for Track & Artist Information
AUX Audio Input for Personal Media Devices
18 FM / 12 AM Station Memory
52w x 4 MOSFET Powered Speaker Level Outputs
1 Set of Low-Level RCA Audio Outputs
Custom Audio Staging & EQ Controls
Multi-Region FM/AM Frequency Stepping
800x480 HD Resolution w/ 400cd/m2 Brightness
4" Mounting Depth



SDR-342 SDR-342T (w/ Analog TV Tuner) Single DIN Digital Media Receiver w/ Detachable 3.4" LCD Screen

Theft Deterrent Detachable Flip-Down Front Faceplate
Playback from up to 32GB SD/MMC Card or USB Flash Drive
720p HD Video Playback of MP4, DIVX, AVI & More
Audio Playback of MP3, AAC, AC3, & WMA
Picture Viewer of JPEG, PNG & GIF
ID3 Tag Reading for Track & Artist Information
AUX Audio Input for Personal Media Devices
18 FM / 12 AM Station Memory
52w x 4 MOSFET Powered Speaker Level Outputs
1 Set of Low-Level RCA Audio Outputs
Custom Audio Staging & EQ Controls
Multi-Region FM/AM Frequency Stepping
720x420 HD Resolution w/ 400cd/m2 Brightness
4" Mounting Depth



DIGITAL AUDIO PLAYERS

VCD-30 Single DIN CD/MP3 Player w/ AM/FM & SD/USB Playback



Detachable Theft Deterrent Faceplate
Playback from DVDR/RW & CDR/RW of MP3, MP4, & DivX
Playback from 32GB SD Card or USB of MP3, MP4, & DivX
AUX Audio Input for Personal Media Devices
2-Channel 2V Pre-Amp RCA Audio Outputs
52x4 MOSFET Powered Speaker Level Outputs
18FM/12AM Station Memory
Custom & Preset EQ Settings
Audio Staging Controls
Remote Control Included



VL-11A Single DIN Mechless Source Unit w/ AM/FM & SD/USB Playback



Detachable Theft Deterrent Front Panel Faceplate
Playback from 32GB SD & USB of MP3, WAV, WMA
Front Panel 3.5mm AUX Audio Input
2-Channel 2V Pre-Amp RCA Audio Outputs
52x4 MOSFET Powered Speaker Level Outputs
18FM/12AM Station Memory
Custom & Preset EQ Settings
Audio Staging Controls
Remote Control Included



VL-16PMP Single DIN Mechless Source Unit w/ AM/FM & SD/USB Playback Detachable Media Player



- Detachable Theft Deterrent Front Panel Faceplate
- Detachable Media Player for AM/FM, MMC/USB Playback
- Built-in Rechargeable Battery by mini-USB
- Earbud Headphones Included
- Playback from 32GB SD or USB of MP3, WAV, WMA
- ID3 Tag Reading for Track & Artist Information
- Front Panel 3.5mm AUX Audio Input
- 2-Channel 2V Pre-Amp RCA Audio Outputs
- 52x4 MOSFET Powered Speaker Level Outputs
- 18FM/12AM Station Memory
- Custom & Preset EQ Settings
- Audio Staging Controls
- Remote Control Included



DVD PLAYERS

VDVD-165 VDVD-165T (w/ Analog TV Tuner) Single DIN DVD Player w/ 32GB SD/USB Playback



Playback from DVDR/RW & CDR/RW of MP3, MP4, & DivX
Playback from 32GB SD Card or USB of MP3, MP4, & DivX
AUX A/V Input for Game Console or Personal Media Devices
In-Dash, Floor, & Vertical Mounting Brackets Included
DIN Size Trim Ring For In-Dash Mounting Included
Flash Memory for Last Position Recall



Remote Control & IR Repeater Included
OSD On Screen Display
Digital Anti-shock
A/V Pre-amp Outputs, 2V
Dimensions: 6.4" x 6.2" x 2"

VDVD-210 Half-DIN DVD Player w/ 32GB SD/USB Playback



Playback from DVDR/RW & CDR/RW of MP3, MP4, & DivX
Playback from 32GB SD Card or USB of MP3, MP4, & DivX
AUX A/V Input for game Console or Personal Media Devices
Floor & Vertical Mounting Brackets Included
Flash Memory for Last Position Recall



Remote Control & IR Repeater Included
OSD On Screen Display
Digital Anti-shock
A/V Pre-amp Outputs, 2V
Dimensions: 6.4" x 6.2" x 1"

CUSTOM INSTALL MONITORS

CI-104NC 10.4" Custom Install Monitor

10.4" TFT-LCD NC model
On screen Display with Remote Control
2 Video Inputs
NTSC/PAL Auto select
4:3 Viewing Aspect Ratio
Resolution: 640x480
Contrast Ratio: 250
Brightness: 350cd/m2
View Angle: 40/60/40/40
Dimensions: 10.5"L x 7.4"W x 1.7"H

CI-112NC 11.2 Custom Install Monitor

11.2" TFT-LCD NC model
On screen Display with Remote Control
2 Video Inputs
NTSC/PAL Auto select
16:9 Viewing Aspect Ratio
Resolution: 800x480
Contrast Ratio: 350
Brightness: 400cd/m2
View Angle: 45/60/40/40
Dimensions: 11"L x 7.7"W x 1.7"H



CI-105NC 15.1 Custom Install Monitor

15.1" TFT-LCD NC model
On screen Display with Remote Control
2 Video Inputs
NTSC/PAL Auto select
4:3 Viewing Aspect Ratio
Resolution: 800x600
Contrast Ratio: 300
Brightness: 400cd/m2
View Angle: 50/60/70/70
Monitor Dimensions: 15.4"L x 10.5"W x 1.8"H

OVERHEAD SOLUTIONS

VCM-156DM

Ceiling Mount DVD Entertainment System w/ MOTORIZED 15.6" LCD



Motorized LCD Screen w/ Last Angle Memory
Car-Spec DVS DVD Drive for Extreme Temperature Exposure
Playback from DVDR/RW of MP3, MP4, & DivX
Playback from 32GB SD Card or USB of MP3, MP4, & DivX
Flash Memory for Last Position Recall
Single Channel Wireless IR Transmitter (use VHP-10, VHP-11)
FM Stereo Transmitter for OEM Integration
A/V Input for Auxiliary Sources
A/V Output for Multiple Component Integration
Triggered Bright White LED Dome Light
NTSC / PAL Auto Selection
1,366x768 16:9 Widescreen Resolution
400 NIT Screen Brightness
Dimensions: 17.5"w x 13"d x 2"h

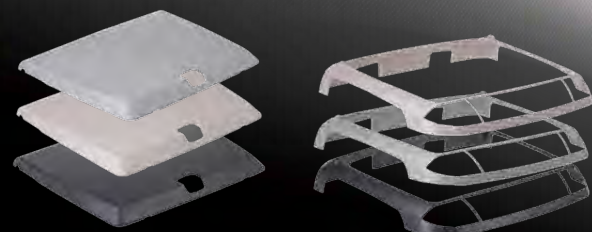


VCM-11DXX

Ceiling Mount DVD Entertainment System w/ 11.2" LCD



Interchangeable Color Skins (beige, black, grey)
Color Matched Trim Rings for Sculptured Ceilings Included
90°/90° Swivel Screen for Angled Viewing
Car-Spec DVS DVD Drive for Extreme Temperature Exposure
Playback from DVDR/RW of MP3, MP4, & DivX
Playback from 32GB SD Card or USB of MP3, MP4, & DivX
Flash Memory for Last Position Recall
Single Channel Wireless IR Transmitter (use VHP-10, VHP-11)
FM Stereo Transmitter for OEM Integration
A/V Input for Auxiliary Sources
Rear Panel RCA A/V Input for Game Console
A/V Output for Multiple Component Integration
Rear Panel Play/Pause Control
Triggered Bright White LED Dome Light
NTSC / PAL Auto Selection
800 x 480 16:9 Widescreen Resolution
400 NIT Screen Brightness
Dimensions: 14.5"w x 12.5"d x 2.5"h

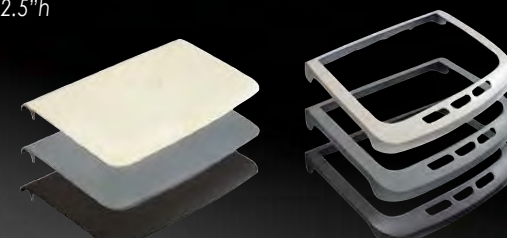


VCM-115DM

Ceiling Mount DVD Entertainment System w/ MOTORIZED 11.2" LCD



Interchangeable Color Skins (beige, black, grey)
Motorized LCD Screen w/ Last Angle Memory
Car-Spec DVS DVD Drive for Extreme Temperature Exposure
Playback from DVDR/RW of MP3, MP4, & DivX
Playback from 32GB SD Card or USB of MP3, MP4, & DivX
Flash Memory for Last Position Recall
Single Channel Wireless IR Transmitter (use VHP-10, VHP-11)
FM Stereo Transmitter for OEM Integration
A/V Output for Multiple Component Integration
A/V Inputs for Auxiliary Sources
Triggered Bright White LED Dome Light
NTSC / PAL Auto Selection
800x480 16:9 Widescreen Resolution
400 NIT Screen Brightness
Dimensions: 12.75"w x 11.5"d x 2.5"h

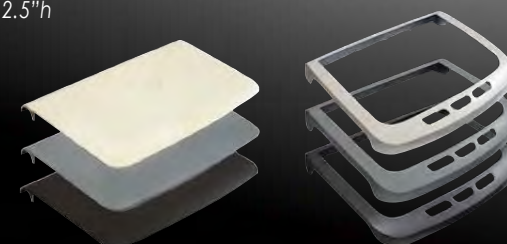


VCM-105DM

Ceiling Mount DVD Entertainment System w/ MOTORIZED 10.2" LCD

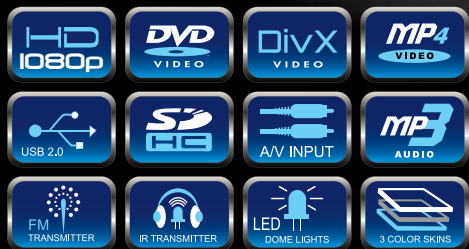


Interchangeable Color Skins (beige, black, grey)
Motorized LCD Screen w/ Last Angle Memory
Car-Spec DVS DVD Drive for Extreme Temperature Exposure
Playback from DVDR/RW of MP3, MP4, & DivX
Playback from 32GB SD Card or USB of MP3, MP4, & DivX
Flash Memory for Last Position Recall
Single Channel Wireless IR Transmitter (use VHP-10S, VHP-11S)
FM Stereo Transmitter for OEM Integration
A/V Output for Multiple Component Integration
A/V Inputs for Auxiliary Sources
Triggered Bright White LED Dome Light
NTSC / PAL Auto Selection
1,024x600 16:9 Widescreen Resolution
400 NIT Screen Brightness
Dimensions: 12.75"w x 11.5"d x 2.5"h



VCM-103DMH

Ceiling Mount DVD/1080p Entertainment System w/ 10.3" LCD & **HDMI MHL Input**



10.3" High Resolution LCD Screen
1,024 x 600 16:9 Widescreen Resolution
3 Changeable Color Skins Included (grey, beige, black)
Automotive-Spec DVD Transport for Extreme Conditions
Playback from DVDR/RW of 1080p MP4, AVI, or DivX
Playback from 32GB SD/MMC or USB of 1080p MP4, AVI, or DivX
HDMI Input from Auxiliary HD Devices
Accepts Soundstream MHL Interface Cable
RCA A/V Input for Auxiliary Source or Opposite Headrest
Rear Panel RCA A/V Input for Game Console
RCA Audio Outputs
Single Channel Wireless IR Transmitter (use VHP-10 or VHP-11)
FM Stereo Transmitter for OEM Integration
Full Function Remote Control Included



VCM-103DM

Ceiling Mount DVD Entertainment System w/ 10.3" LCD

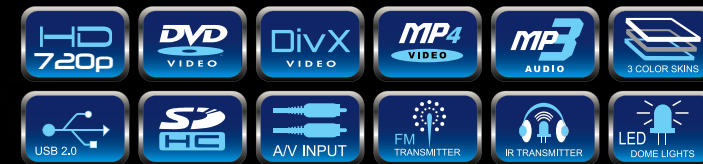


10.3" High Resolution LCD Screen
1,024 x 600 16:9 Widescreen Resolution
Interchangeable Color Skins (beige, black, grey)
Automotive-Spec DVD Transport for Extreme Conditions
Playback from DVDR/RW of MP3, MP4, AVI, or DivX
Playback from 32GB SD/MMC or USB of MP3, MP4, AVI, or DivX
Single Channel Wireless IR Transmitter (use VHP-10 or VHP-11)
FM Stereo Transmitter for OEM Integration
A/V RCA Inputs for Auxiliary Sources
Rear Panel RCA A/V Input for Game Console
Triggered Bright White LED Dome Light
NTSC / PAL Auto Selection
400 NIT Screen Brightness
Dimensions:



VCM-9DX

Ceiling Mount DVD Entertainment System w/ 9" LCD



Interchangeable Color Skins (beige, black, grey)
Car-Spec DVS DVD Drive for Extreme Temperature Exposure
Playback from DVDR/RW of MP3, MP4, & DivX
Playback from 32GB SD Card or USB of MP3, MP4, & DivX
Flash Memory for Last Position Recall
Single Channel Wireless IR Transmitter (use VHP-10, VHP-11)
FM Stereo Transmitter for OEM Integration
A/V Input for Auxiliary Sources
A/V Output for Multiple Component Integration
Triggered Bright White LED Dome Light
NTSC / PAL Auto Selection
800 x 480 16:9 Widescreen Resolution
400 NIT Screen Brightness
Dimensions: 11" w x 9.75" d x 2.5" h

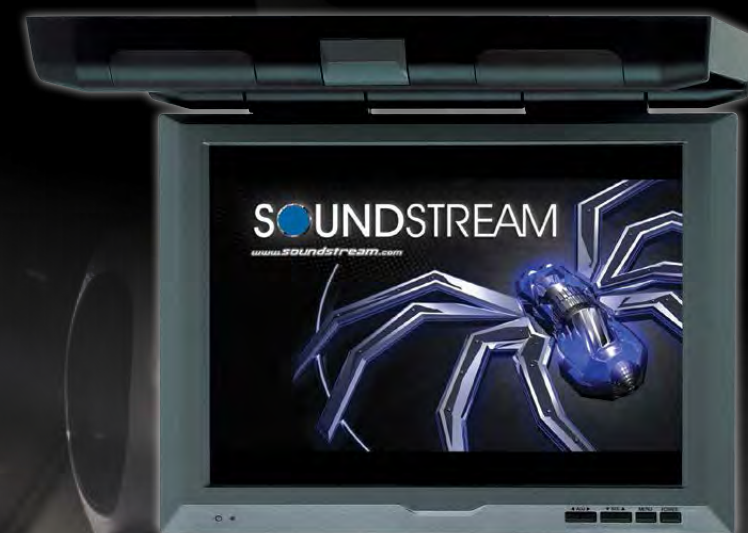


VCM-151

Ceiling Mount 15.2" LCD Monitor



Low Reflection TFT-LCD Monitor
2 RCA A/V Inputs for Auxiliary Source
Single Channel Wireless IR Transmitter (use VHP-10, VHP-11)
NTSC / PAL Auto Selection
1,024 x 768 4:3 Fullscreen Resolution
400 NIT Screen Brightness
Dimensions: 15.75" w x 14.75" d x 2" h



VCM-112

Ceiling Mount 11.2" LCD Monitor



Interchangeable Color Skins (beige, black, grey)
Color Matched Trim Rings for Sculptured Ceilings Included
90°/90° Swivel Screen for Angeled Viewing
Single Channel Wireless IR Transmitter (use VHP-10, VHP-11)
A/V Input for Auxiliary Sources
Triggered Bright White LED Dome Light
NTSC / PAL Auto Selection
800 x 480 16:9 Widescreen Resolution
400 NIT Screen Brightness
Dimensions: 14.5" w x 12.5" d x 2.5" h



SHDM-103

1080p Digital Media Headrest Preloaded w/ 10.3" LCD & **HDMI MHL NPWT**



10.3" High Resolution LCD Screen
1,024 x 600 16:9 Widescreen Resolution
Forward / Backwards Tilting Headrest
3 Changeable Color Skins Included (grey, beige, black)
32GB USB Readers for 1080p MP4, AVI, & DivX Playback
Dual Channel Wireless IR Transmitter (use HP-12S)
FM Stereo Transmitter for OEM Integration
HDMI Input from Auxiliary HD Devices
Accepts Farenheit MHL Interface Cables
2 RCA A/V Input for Auxiliary Source
RCA Audio Outputs
Hardwired Headphone Output
Full Function Remote Control Included
3/8" Locking Pole w/ 1/2" & 9/16" Adapters
4.75" ~ 8.25" Pole Width Adjustment
NTSC / PAL Auto Selection
Dimensions:



GRIP-H
Headrest Mounting Bracket for Mobile Devices



MHL / HDMI Interface Cables

HDM-i4 ~ iPhone4, iPhone4S & iPad2

HDM-i5 ~ iPhone5 & iPad3

HDM-A2 ~ Galaxy 2 & Select Android Devices

HDM-A3 ~ Galaxy 3 & Select Android Devices

5ft interface cable unlocks 1080p video and audio playback from MHL enabled mobile devices. Each interface cable features the appropriate micro connector for your mobile device and full size HDMI. Farenheit HDMI interface cables also charge your mobile device. Available for select iOS and Android devices. Visit soundstream.com for complete compatibility listings.



VHD-9GR (Gray)

VHD-9GRDK (Dark Gray)

VHD-9BG (Beige)

VHD-9BK (Black)

1 Pair Universal Replacement Headrests Pre-Loaded w/ 9" LCD Touch Screens, DVD Players, & Headphones



Forward/Backwards Tilting Headrests W/ Swivel LCD Screen
Side Slot-Loading DVD Player In Each Headrest
Playback from DVDR/RW of MP3, MP4, & DivX
Playback from 32GB SD Card or USB of MP3, MP4, & DivX
Independent 900Mhz. RF 2-ch. Headphone Transmitter
2 RF 2-ch. Padded Headphones Included
FM Stereo Transmitter for OEM Integration
RCA A/V Output for Auxiliary Source or Opposite Headrest
Selectable DVD Mode or A/V Input from Opposite Headrest
AUX A/V Input for Game Console or Personal Media Devices
Hardwired Headphone Output
NTSC / PAL Auto Selection
Independent Remote Controls
7/16" Pole Diameter w/ 5/8" Adapters
4" ~ 8" Pole Width Adjustment
480 x 234 16:9 Widescreen Resolution
400 NIT Screen Brightness
Dimensions: 12"w x 5"d x 9"h



VHD-90CC
 Universal Replacement Headrest Pre-Loaded w/ DVD Player & 9" LCD Screen

VHD-70CC
 Universal Replacement Headrest Pre-Loaded w/ DVD Player & 7" LCD Screen



Forward/Backwards Tilting Headrest
 3 Changeable Color Skins Included (grey, beige, black)
 Playback from DVDR/RW of MP3, MP4, & DivX
 Playback from 32GB SD Card or USB of MP3, MP4, & DivX
 Dual Channel Wireless IR Transmitter (use VHP-12)
 FM Stereo Transmitter for OEM Integration
 AUX A/V Input for Game Console or Personal Media Devices
 RCA A/V Input for Auxiliary Source or Opposite Headrest
 RCA A/V Output to Auxiliary Source or Opposite Headrest
 Hardwired Headphone Output
 3/8" Locking Pole w/ 1/2" & 9/16" Adapters
 4.75" ~ 8.25" Pole Width Adjustment
 NTSC / PAL Auto Selection
 800 x 480 16:9 Widescreen Resolution
 400 NIT Screen Brightness
 Dimensions: 11.5"w x 8.5"h x 6"d (90CC)
 Dimensions: 10"w x 57"h x 5.5"d (70CC)



VH-90CC
 Universal Replacement Headrest Pre-Loaded w/ 9" LCD

VH-70CC
 Universal Replacement Headrest Pre-Loaded w/ 7" LCD



Forward/Backwards Tilting Headrest
 3 Changeable Color Skins Included (grey, beige, black)
 Dual Channel Wireless IR Transmitter (use VHP-12)
 FM Stereo Transmitter for OEM Integration
 AUX A/V Input for Game Console or Personal Media Devices
 2 RCA A/V Input for Auxiliary Source or Opposite Headrest
 Hardwired Headphone Output
 3/8" Locking Pole w/ 1/2" & 9/16" Adapters
 4.75" ~ 8.25" Pole Width Adjustment
 NTSC / PAL Auto Selection
 800 x 480 16:9 Widescreen Resolution
 400 NIT Screen Brightness
 Dimensions: 11.5"w x 8.5"h x 6"d (90CC)
 Dimensions: 10"w x 57"h x 5.5"d (70CC)



HEADREST MONITORS

VHR-65T 6.5" LCD Touch Screen Headrest Monitor

- 6.5" Digital Amorphous Active Matrix LCD Touch Screen
- Touch Screen Control of VDVD-165 & VDVD-210
- 2 RCA Video Input
- Preset/Manual Image Control
- NTSC/PAL Selection
- Sculptured Trim Ring Included
- 400 x 240 16:9 Widescreen Aspect Ratio
- 550 NIT Panel Brightness
- Cutout Dimension: 6.5"w x 4.125"h x 1"d



VHR-72IRA 7" Dual Channel IR Headrest Monitor

- Two Auxiliary A/V Input
- Dual Channel IR Transmitter (use VHP-12)
- Wired Headphone Output
- Low Refection TFT-LCD Monitor
- Ultra Bright LED Backlighting
- Selectable Aspect Modes
- Preset/Manual Image Control
- Dimmer Control
- Remote Control
- NTSC/PAL Selection
- 480 x 234 (16:9) Image Resolution
- Cutout Dimensions: 7"w x 4.75"h x .75"d



VHR-76 7" LCD Headrest Monitor

- 7" Amorphous Active Matrix TFT/LCD Monitor
- Ignition Power On/Off Optional
- Single RCA Video Input
- Selectable Aspect Modes
- NTSC/PAL Selection
- Sculptured Trim Ring Included
- Remote Control Included
- 480 x 234 Screen Resolution
- 16:9 Widescreen Aspect Ratio
- 400 NIT Panel Brightness
- Cutout Dimension: 7"w x 4.5"h x 1"d



VSV-78 7" LCD SunVisor Monitor

- 7" Amorphous Active Matrix TFT/LCD Monitor
- Slim Sun Visor Mounting Tray Included
- Ignition Power On/Off Optional
- Single Video Input
- Selectable Aspect Modes
- Preset/Manual Image Control
- NTSC/PAL Selection
- Remote Control Included
- 480 x 234 Screen Resolution
- 16:9 Widescreen Aspect Ratio
- 400NIT Panel Brightness
- Cutout Dimension: 7"w x 4.55"h x 1"d



HEADPHONES

VHP-10 Single 1ch. IR Wireless Headphone

- EVA hard carrying case included
- Foldable Ear Pads for Compact Storage
- On/Off Switch Saves Battery Life
- Auto Power Off Function
- Auto Mute Function
- Variable Volume Control
- ALC Auto Level Control
- Works w/ VHP-22



VHP-12 Single 2ch. IR Wireless Headphone

- Adjustable Headphone Straps
- Channel Selectable From Each Headphone
- Ear Pads Fold Flat for Seat Pocket Storage
- EVA hard Carry Case Included
- MP-3 Player Input Via 3.5mm Jack
- On/Off Switch Saves Battery Life
- Auto Power Off Function
- Auto Mute Function
- Variable Volume Control
- ALC Auto Level Control



VHP-11 Single 1ch. IR Wireless Headphone

VHP-22 Pair 1ch. IR Wireless Headphones with Transmitter

- Stereo Audio IR Transmitter
- Adjustable Headphone Straps
- Ear Pads Fold Flat for Seat Pocket Storage
- EVA hard Carry Case Included
- MP-3 Player Input Via 3.5mm Jack
- On/Off Switch Saves Battery Life
- Auto Power Off Function
- Auto Mute Function
- Variable Volume Control
- ALC Auto Level Control



VHP-900 Single 2ch. RF 900MHz Wireless Headphone

VHP-9002 Pair 2ch. RF 900MHz Wireless Headphones with Transmitter

- Dual Stereo Audio Inputs
- Channel Selectable From Each Headphone
- 100ft. Operational Distance
- Adjustable Headphone Straps
- Ear Pads Fold Flat for Seat Pocket Storage
- EVA hard Carry Case Included
- MP-3 Player Input Via 3.5mm Jack
- On/Off Switch Saves Battery Life
- Auto Power Off Function
- Auto Mute Function
- Variable Volume Control
- ALC Auto Level Control



WINDOW FILM TINT

Automotive and Commercial Application Window Tint

Soundstream's window tint film uses impregnated color chips and twin UV inhibitors in the initial manufacturing process. This insures maximum benefit for your interior. Traditional manufacturing process uses clear chips and adds dyes, pigments, or spray-on colors, and a UV inhibitor in the adhesive. Farenheit Window Tint is built to last and protect...

Additional Benefits

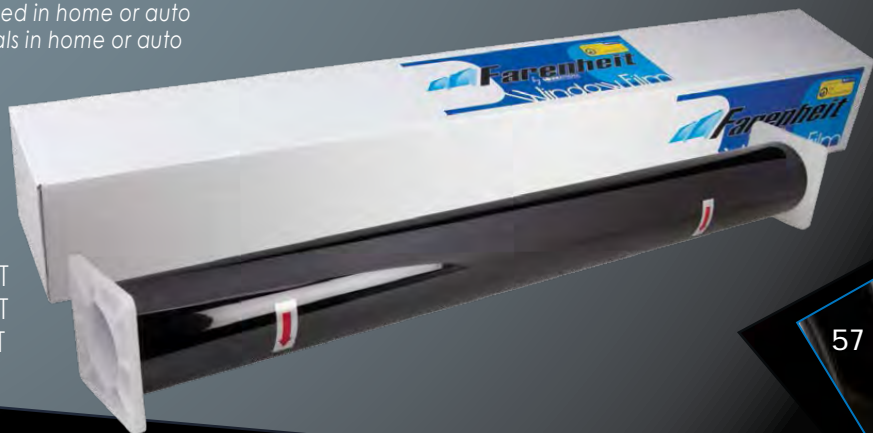
- Color-stable film that never bubbles, peels, or turns purple over time
- Malleable for seamless attachment to curved surfaces
- American made adhesives for impervious seal and undistorted views
- Reduces heat, glare and overall energy costs when used in home or auto
- Eliminate harmful UV by 99% to protect interior materials in home or auto
- Lifetime Warranty with Everlast Series, Made in U.S.A.
- 4-Year Prorated Warranty with Elite Series
- Available in 20", 24", 36", 40" Width, all in 100ft. length
- Everlast Series Available in 60" Width

Everlast Series

EV-05	6% VLT
EV-15	16% VLT
EV-20	21% VLT
EV-35	35% VLT
EV-50	51% VLT

Elite Series

LT-05	6% VLT
LT-20	22% VLT
LT-35	33% VLT
LT-50	51% VLT



REAR VIEW CAMERAS

VL-3CSC – Chrome

VL-3CSB – Black

License Plate Frame w/ Night Vision Camera, Back-Up Sensors, On-Screen Distance Gauge, & Proximity Alerts

- U.S. Patent #7,106,183 B2
- 2 Object Sensors w/ Proximity Alert
- 1/4" CCD Color Camera
- 0.5 LUX Low Light Lens
- Waterproof Camera Housing
- Waterproof External Wire Connections
- Vertically Pivoting Camera Housing
- 7' Effective Viewing Distance
- Inconspicuous Speaker for Alerts
- 8 IR LEDs for Night Viewing
- On-Screen Distance Gauge
- 130° Capture Angle
- RCA Video Output
- Cast Steel Alloy Frame
- Reversed Image
- 640 x 480 Resolution



VLP2-CSC – Chrome

VLP2-CSB – Black

License Plate Frame w/ Night Vision Camera, Back-Up Sensors, On-Screen Distance Gauge, & Proximity Alerts

- U.S. Patent #7,106,183 B2
- 3 Object Sensors w/ Proximity Alert
- 1/4" CCD Color Camera
- 0.5 LUX Low Light Lens
- Waterproof Camera Housing
- Waterproof External Wire Connections
- Vertically Pivoting Camera Housing
- 7' Effective Viewing Distance
- Inconspicuous Speaker for Alerts
- 8 IR LEDs for Night Viewing
- On-Screen Distance Gauge
- 130° Capture Angle
- RCA Video Output
- Cast Steel Alloy Frame
- Reversed Image
- 640 x 480 Resolution



VLP-1CA

Chrome License Plate Frame with Camera

- Chrome Finish on ABS License Plate Frame
- Vertically Pivoting Camera Housing
- On-Screen Distance Gauge
- 1/4" CCD Wide View Color Camera
- 0.1 LUX Low Light Lens
- 163° Capture Angle
- RCA Video Output
- Reversed Image
- 648 x 488 Resolution



VCCD-4XS

1" Surface Mount Rear View Camera

- Vertically Pivoting Mounting Bracket
- Waterproof External Wire Connections
- On-Screen Distance Gauge
- 1/4" CCD Color Camera
- 0.1 Lux Low Light Lens
- 163° Capture Angle
- RCA Video Outputs
- Reversed Image
- 648 x 488 Resolution



VCCD-2

Flush Mount Rear View Bullet Camera

- 2.5" Threaded Housing & Locking Collars
- 1/3" Sharp CCD Color Camera
- 0.1 LUX Low Light Lens
- Weather-Resistant Housing
- RCA Video Output
- Reversed Image
- 510 x 492 Resolution



VCCD-1

Water-Proof Surface Mount Rear View Camera

- Vertically Pivoting Stand for Angled Installation
- 8 IR LEDs for Night Viewing
- 1/3" Sharp CCD Color Camera
- 0.1 LUX Low Light Lens
- RCA Video Output
- Reversed Image
- 512 x 582 Resolution



VCCD-3

Surface Mount Rear View Bullet Camera

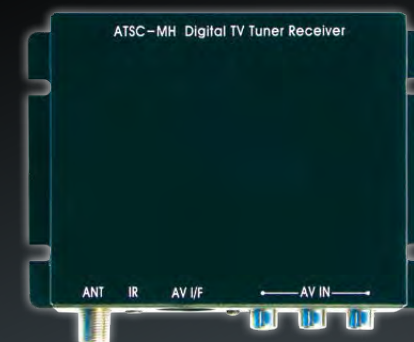
- Pivoting Stand for Angled Installations
- 8 IR LEDs For Night Viewing
- 1/4" Sharp CCD Color Camera
- 0.1 LUX Low Light Lens
- RCA Video Output
- Reversed Image
- 510 x 380 Resolution



VDTV-MHU

Universal DTV-MH TV Tuner

- Universal A/V RCA Outputs For Any Device
- Remote Control & IR Repeater Included
- Neodymium Magnetic Antenna Included
- Full DTV-MH 57-803MHz Receiving Frequencies
- Freeway Speed Signal Receiver
- Electronic Programming Guide for On-Screen Channel Surfing
- Favorite Channels Programming
- CCD Closed Captions Optional
- OSD Language Options: English, Spanish, & French
- 4:3 or 16:9 Aspect Ratio
- SDTV 720P Video Signal



VDTV-2U

Universal ATSC Digital TV Tuner

- Full DTV 57-803MHz Receiving Frequencies
- Electronic Programming Guide for On-Screen Channel Surfing
- Favorite Channels Programming
- CCD Closed Captions Optional
- OSD Language Options: English, Spanish, & French
- 4:3 or 16:9 Aspect Ratio
- SDTV 720P Video Signal
- RCA Video and Stereo Audio Outputs
- Antenna, Remote, & Receiving Eye Included



VVB-2

One In & Five Output Video Signal Booster

- Five Individual Output Trimmer Gain Controls
- Shielded Metal Housing For Noise Rejection
- Video Output Gain control



VFT-6

FM Transmitter

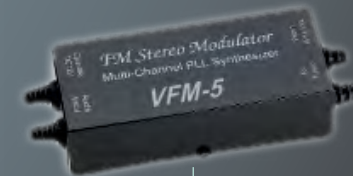
- Wireless 3 CH FM Transmitter
- Shielded Housing For Noise Rejection



VFM-5

PLL FM Modulator

- PLL Phase Lock Loop Tuner Outputs
- 8 Frequency Settings On Selectable DIP Switches
- Shielded Metal Housing For Noise Rejection



SOUNDSTREAM



www.soundstream.com

© 2013 SOUNDSTREAM TECHNOLOGIES. MONTEBELLO, CALIFORNIA, U.S.A
ALL RIGHTS RESERVED. SPECIFICATIONS AND DESIGNS ARE SUBJECT TO CHANGE WITHOUT NOTICE
PRINTED IN U.S.A