

**SOUNDSTREAM**

**SHAD-9H**

**9 inch DVD Play**



**OWNER'S MANUAL**

# Contents

▪ Caution.....	3	Subtitle.....	18
▪ Features and Controls.....	5	Title.....	18
Monitor/DVD Player.....	5	Slow.....	18
Remote Control.....	8	Fast Reverse Searching.....	19
▪ Setting.....	10	Fast Forward Searching.....	19
▪ DVD Setup.....	11	Prev.....	20
Sound.....	11	Next.....	20
System.....	12	Repeat A-B.....	20
Player.....	13	Repeat.....	21
▪ DVD Functions.....	15	N/P.....	22
Eject.....	15	PBC.....	22
Vol+/Vol-.....	15	▪ Zoom.....	22
Mute.....	15	▪ GO TO.....	22
Play or Pause.....	15	▪ USB Functions.....	22
Stop.....	15	▪ Connection Diagram.....	23
Audio.....	16	▪ Installation.....	24
Arrows.....	16	▪ Disc Information.....	25
Setup.....	16	Troubleshooting.....	26
Menu.....	16	Specifications.....	27
Display.....	17		
Number Buttons.....	17		

# SPECIFICATIONS

<b>Power</b>	DC 12V
<b>Screen Format</b>	16:9
<b>Resolution Pixel</b>	800(RGB)×480
<b>Color System</b>	NTSC/PAL Auto Select
<b>A/V Input</b>	DVD-AV-HDMI
<b>A/V Output</b>	1 EA
<b>Size of screen</b>	9 inch

Note: This equipment has been tested and has been found to comply with the limits for a Class A digital device, pursuant to part 15 of the FCC Rules. These limits are designed to provide reasonable protection against harmful interference when the equipment is operated in a commercial environment. This equipment generates, uses, and can radiate radio frequency energy and, if not installed and used in accordance with the instruction manual, may cause harmful interference to radio communications. Operation of this equipment in a residential area is likely to cause harmful interference. In some cases, the user will be required to correct the interference at his own expense.

# Troubleshooting

Symptom	Items to Check	Actions to be Taken
Buttons do not work.	Is the power turned on?	Check the car battery capacity.
No sound	Is the audio which is connected with the audio cable set to receive the DVD signal output? Is audio cable connected securely? Is the monitor which is connected with the audio cable turned on? Is the audio output set in the correct position?	Select the correct input mode for the audio receiver. Connect the audio cable into the jacks securely. Turn on the monitor connected with the audio cable. Set the Audio Output to the correct position, and then turn on the DVD player again by pressing the POWER button.
Remote control does not work properly.	Is the remote control facing the remote sensor? Is the distance too far? Is there any obstacle in the middle? Is the battery weak?	Point the remote control toward the remote sensor of the product. Use the remote control within 15 feet. Remove the obstacle. Replace with new battery.

## Moisture or condensation on lens

When a disc is brought from a cold environment to a warm one, there may be moisture on the the disc, or condensation on the pickup lens. It will affect disc playback.

1. Remove the disc from the DVD player.
2. Turn on the power and leave it on for an hour to vaporize the condensation.

# Caution

Please read and observe all warnings and instructions in this manual and those marked on the unit. Retain this booklet for future reference.

There are two kinds of alarm symbols as follows:



**WARNING**

The lightning bolt with arrowhead inside in an equilateral triangle is intended to alert the user to the presence of " dangerous voltage " within the product's enclosure that may be of sufficient magnitude to constitute a risk of electric shock to people.



**CAUTION**

The exclamation point inside an equilateral triangle is intended to alert the user to the presence of important operating and maintenance (servicing) instructions in the literature accompanying the product.



**WARNING**



Installation of all TV monitors must be out of the driver's field of vision.



Do not mount the product where it will obstruct the deployment of the airbag or in an area where it would affect the driver's ability to control the vehicle. Also be careful to avoid mounting the product where it can become hazardous during sudden stops or in the event of an accident.



Do not try and service these products yourself, locale a qualified service center or factory service center for all repairs.



Be careful not to drop or apply under pressure to the front panel of your video monitor. If the screen cracks due to misuse, your warranty will be void!



Use extra caution with any liquids in your car. If you or your child spills any liquid on these products, pull your vehicle to the roadside and turn the key off to disconnect or wipe the products with a towel. Do not operate the equipment until all liquids have either evaporated or you have had the monitor inspected at a service center by a qualified technician. Severe harm or danger can result.



Use only a damp cloth to clean the screen and use only purified water on the cloth. wring out all excess water prior to wiping the screen. Do not use any cleaners or chemicals to clean the screen. In most cases a dry cloth will do!

## Caution

### CAUTION



Quality installations are best performed by qualified and certified installers.



Watching the monitor for an extended period of time without the engine running may deplete the vehicle's battery charge.



Don't touch the unit if there is a flash of lightning. You may receive an electric shock.



This product is designed for operation with a 12 Volt DC, negative ground vehicle. It is not suitable for operation under other conditions or voltages.



Do not cover or stop up heater ducts or vents. It may cause a fire or receive an electric shock.



Do not bring magnetic devices such as credit card or magnetic card near the magnets.

### Operating Notes

1. The operating temperature of this product is limited to 14°~+140°F.
2. If your vehicle is extremely hot or cold you must allow time for your air conditioner or heater to cool or heat the vehicle until operating temperatures have returned to normal operating ranges.
3. Optimal picture quality is achieved when viewed from directly front of the monitor (+/-30degrees).
4. Do not open the housing and attempt to make any repairs yourself. Refer servicing to qualified personnel.
5. DVD Players use an invisible laser beam which can cause hazardous radiation exposure. Be sure to operate the unit correctly as instructed.
6. Do not cut the car power supply off while a disc is playing. It can cause damage to the DVD Player.
7. If the buttons get stuck, please try to press the up of buttons, it will get back. It won't impact using normal.
8. If you can't find the files name in list when playing, please reset units or turn off/on over again.
9. If the unit can't be change mode when playing some special files which the unit didn't support, please reset units or turn off/on over again.

## Disc Information

### DVD features

DVD discs provide high-resolution images with high-quality sound. This DVD player can play not only DVD discs of various versions, but also S-VCD, VCD, audio CD and MP3 discs.

### Discs that cannot be played

DVD-RW, DVD-REM, CD-ROM, CD-EXTRA discs cannot be played on this unit. In addition, a CD or a CD-RW which was recorded on special software cannot be played.

### Region code

Your DVD player is designed and manufactured to region management information that is recorded on a DVD disc. Please check the region code.

1: North America 2: Japan 3: Korea and Southeast Asia

4: Australia, Mid & South America 5: Russia 6: China

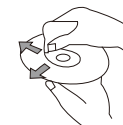
### How to handle the disc

Don't touch the shiny side of the disc (the side with the embedded information). Don't stick a label or a glue-based note on either side of the disc. Don't use discs that have glue or a damaged label with exposed adhesive residue. It might result in damage to your DVD player. Don't put discs in the sunshine. Park your car in the shade.



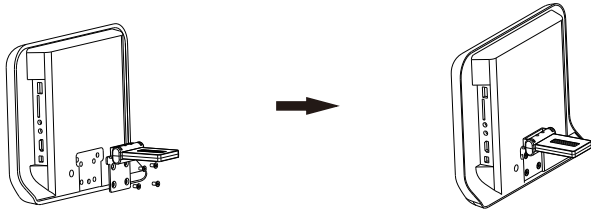
### How to handle the discs

Only use round discs. Discs with other shapes like a star, a heart, etc. may cause damage to the player. If a disc is dirty, wipe softly with a wet cloth and then with a dry one. Before playback, wipe the disc outward from the center with a clean cloth. Do not use any type of solvent such as thinner, benzene, commercially available cleaners or antistatic spray. To avoid damaging your DVD player, don't use a scratched disc.

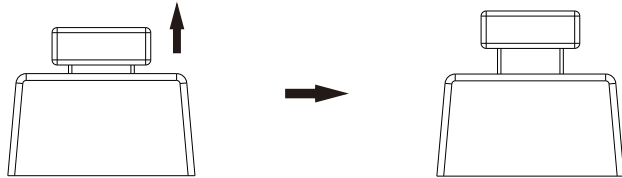


# Installation

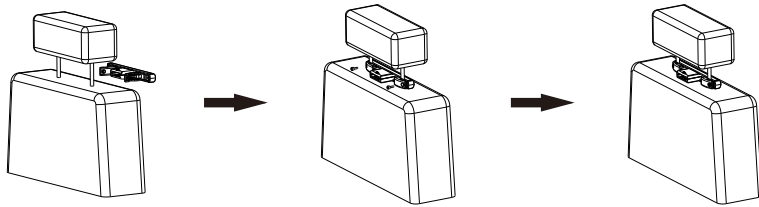
1. The machine combine with the bracket, and use 4 screws to fix.



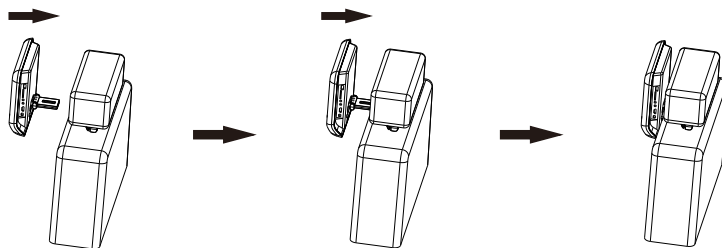
2. Rising the headrest.



3. After rising the headrest, use the "headrest mounting bracket" to fix the iron poles of the headrest. Distance between The holes of the headrest mounting bracket can adjust from 105mm-210mm, and then use 2 screws to fix.



4. the bracket of the machine insert into "headrest mounting bracket" to fix, and the distance of the front and back can adjust, and last use the lock of the bracket to lock.

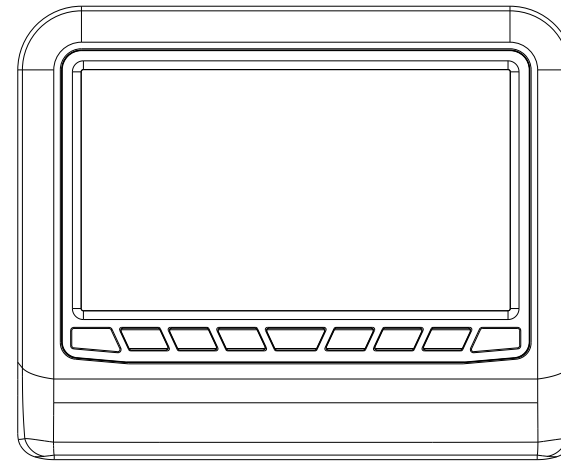


# Features and Controls

## Monitor/DVD Player



Remote Control

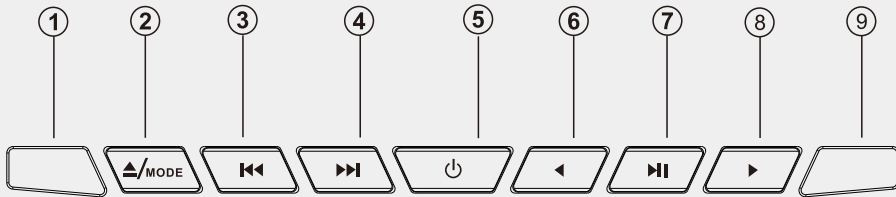


Monitor/DVD Player



Wireless Headphones  
(Not Included)

## Features and Controls

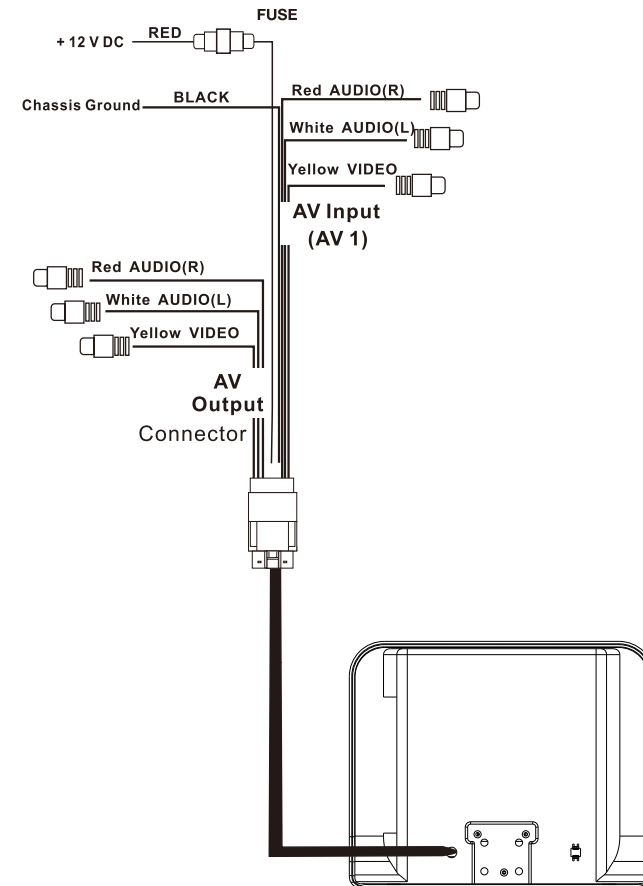


- ① Dual IR Transmitter
- ② Load the disc and pop the disc ( long press)/ when disc is playing, short press is to be "mode button".
- ③ Long press is fast backward/ short press is to the last section.
- ④ Long press is fast forward/ short press is to the next section.
- ⑤ Power Switch.
- ⑥ VOI-(when the disc is palying)/ analogue-(in the "set up" interface)
- ⑦ Short press for " Play"/ "Pause"/ "Enter"/ Long press for " Set up" interface,then long press again back to last step.
- ⑧ VOI+(when the disc is palying)/ analogue+(in the "set up" interface)
- ⑨ Remote Transmitter

## Connection Diagram

On a towel or soft cloth, gently place the monitor assembly "face down" on a stable work surface.

Using the wires provided, complete the audio, video and power connections in your vehicle as shown in the diagram below.



# DVD Functions

## PBC

[DVD]/[CD]/[MP3]

This button does not function in PBC mode.

## Zoom

[DVD]

Some DVDs are programmed to allow you to zoom into the image, magnifying it. Pressing the ZOOM button does this in steps, according to the chart to the right.

[VCD]/[AUDIO]/[MP3]/[HDMI]

This button does not function in this mode.

OSD	CONDITION
ZOOM 2 X	ZOOM X 2
ZOOM 3 X	ZOOM X 3
ZOOM 4 X	ZOOM X 4
ZOOM 1 / 2	ZOOM X 1 / 2
ZOOM 1 / 3	ZOOM X 1 / 3
ZOOM 1 / 4	ZOOM X 1 / 4
Off	Off

## GO TO

The GO TO function allows you to begin playback at a specific location on the disc. To do this, press GO TO and navigate the screen which follows to select this playback location.

**TT**

Move to the desired title.

**CH**

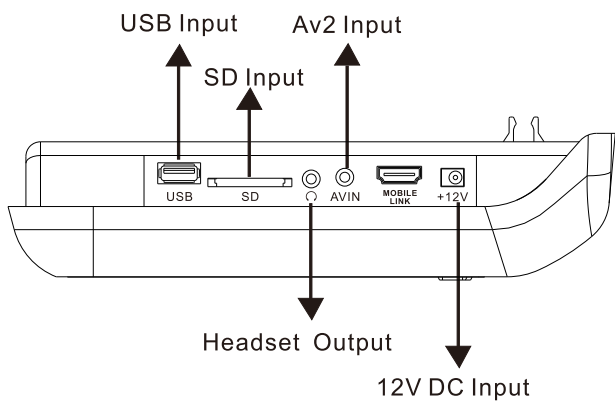
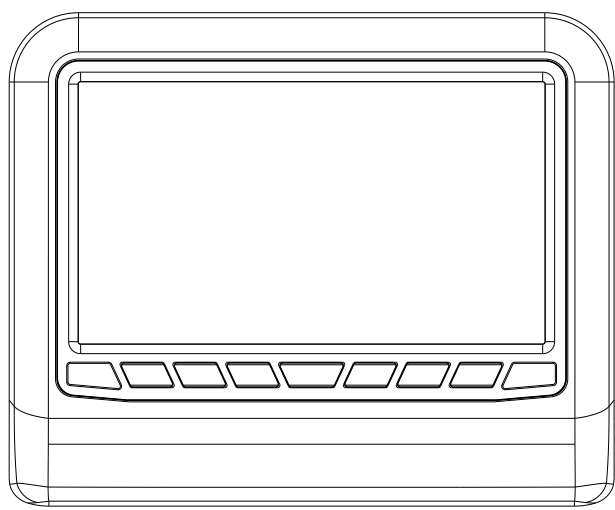
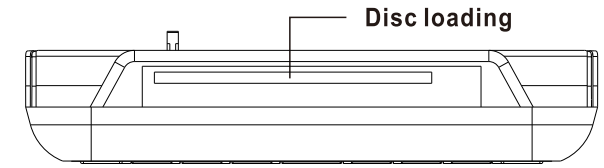
Move to the desired chapter.

Watch play time.

# USB Functions

1. When USB is inputted, press the MODE select button, then press the Left/Right (monitor) button to move to USB item, finally, press and hold the Enter select button to confirm the item.
2. Use the (arrow and ENTER) buttons to select and set desired settings.
3. Press the menu button to exit when photo playing, and press the (■) button to exit in the other time.

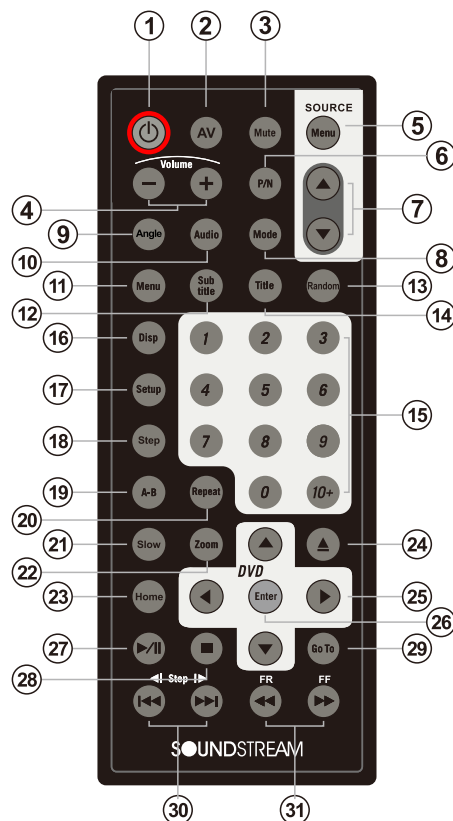
# Features and Controls



# Features and Controls

## Remote Control

- ① **POWER**  
Turns the DVD Player/Monitor on or off.
- ② **AV**  
Use this button to AV Mode.
- ③ **MUTE**  
Press this button to switch off the audio during playback. Press again to restore the audio.
- ④ **VOL-/+ button**  
Use to increase or decrease volume level.
- ⑤ **MENU (Source Menu)**  
Press to enter source menu, Press and hold to confirm a selection
- ⑥ **P/N**  
This button permits you to choose among Multi, PAL and NTSC/AUTO.
- ⑦ **UP/DOWN**  
Use to move to the desired menu.
- ⑧ **MODE**  
Use this button to switch between two modes  
DVD→USB→SD
- ⑨ **ANGLE**  
Press to switch the viewing angles.  
(Note: This function only work with those discs encoded with multiple camera angles. )
- ⑩ **AUDIO**  
Use this button to select one of the audio soundtracks programmed on a DVD disc. It is also used to select the audio output mode for the DVD playback.  
(Available only if the disc supports available audiotype.)
- ⑪ **MENU (DVD menu)**  
This button permits you to view the menu on the DVD.
- ⑫ **SUBTITLE**  
Use this button to select the menu for choosing a subtitle language.
- ⑬ **PROG**  
Select the programming mode of play.
- ⑭ **TITLE (Title menu)**  
When a DVD is playing, press this button to view the Title Menu.
- ⑮ **NUMERIC button**  
Use when making a selection on the menu screen.



# DVD Functions

## Repeat

### [DVD]

Pressing REPEAT button changes the play mode as follows:

OSD	CONDITION
CHAPTER	Repeat chapter
TITLE	Repeat title
REP ALL	All
OFF	Repeat off

### [CD]

Pressing REPEAT button changes the play mode as follows:

OSD	CONDITION
REP:1	Repeat one
ALL	All
OFF	Repeat off

### [MP3]

Pressing REPEAT button changes the play mode as follows:

OSD	CONDITION
REP:1	Repeat one
REP:DIR	Repeat directory
ALL	All
OFF	Repeat off

## N/P

This button is used to select the video standard for the DVD mode between NTSC and PAL formats.



## DVD Functions

### Prev(⏮)

#### [DVD]

Press this button to advance the player from the current chapter to the previous chapter.

#### [CD]/[MP3]

Press this button to move to the previous track.

### Next(⏭)

#### [DVD]

Press this button to advance the player from the current chapter to the next chapter.

#### [CD]/[MP3]

Press this button to move from the current track to the next track.

### Repeat(A-B)

#### [DVD]/[CD]

You can set the player to repeat a segment over and over until you cancel it. To do this, you mark the beginning of the desired segment (A) and the end of segment (B). The selected segment will be repeated automatically until canceled.

OSD	CONDITION
A	Start point of repeat
A B	Ending point repeat function
A - B CANCEL	Cancel repeat

## Features and Controls

### 16 DISPLAY

Press to show elapsed or remaining time of a chapter or a title.

### 17 SETUP

Press this button to display the Setup menu. The Setup menu enables you to enter the settings required for the unit to work properly.

### 18 STEP

Press the button to execute the first stop, press the button in the second and subsequent step function.

### 19 A-B (repeat from A to B)

Use this button to select the beginning and end of a track which you wish to have repeat in playback.

### 20 REPEAT

Press this button to change the playback mode to repeat.

### 21 SLOW

Select slow play.

### 22 ZOOM

If your DVD disc supports zooming in to see the program differently, pressing this button will enable you to change the amount of zoom.

### 23 HOME

Press this button to return to the root menu.

### 24 EJECT

Into/eject the disc.

### 25 UP/DOWN/RIGHT/LEFT ARROWS

Use these buttons to navigate the various menus and screens for the monitor and DVD systems.

### 26 ENTER

Press this button to confirm the item you have found and highlighted using the arrow buttons. Usually this is done to confirm a selection or item to be played on the DVD.

### 27 PLAY/PAUSE

To start playback of a disc, press this button. Press again to pause the playback. If playback is paused, press this button to resume playback.

### 28 STOP

Press this button to stop the playback of the current disc.

### 29 GO TO

Use to search for a title or a chapter on your DVD disc.

### 30 SKIP FORWARD/BACK

Use these buttons to skip to the next or last track, chapter or file on the disc in the player.

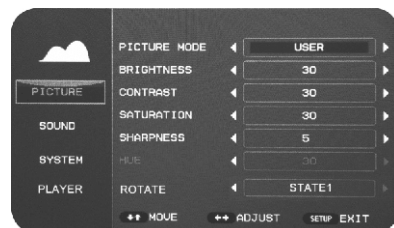
### 31 FAST FORWARD/REVERSE PLAY

Use these buttons to select either fast forward or fast reverse playback.

# Setting

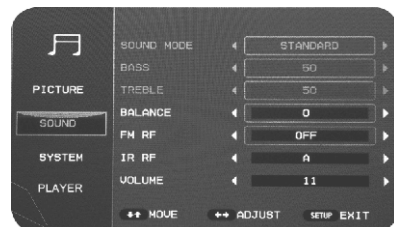
## Picture

Fine tune the display settings. Brightness, contrast, saturation, sharpness, hue, and orientation. Adjust manually or use one of the presets found under "Picture Mode".



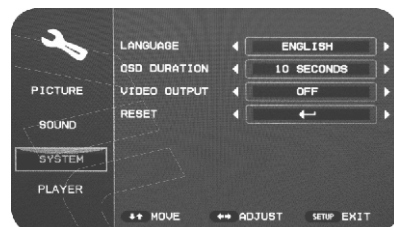
## Sound

Fine tune the sound settings. Bass, Treble, Balance, FM Radio Frequency, IR Radio Frequency, Volume. Adjust manually or use one of the presets found under "Sound Mode".



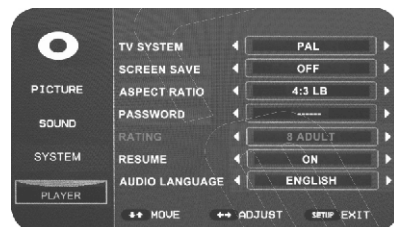
## System

Change system settings. Language, OSD Duration, Video Output, Reset. OSD Duration changes the amount of time the menu will wait before disappearing from inactivity. Reset restore the factory default settings.







## Player

Adjust disc playback options. TV system, screen save, aspect ratio, password, rating, resume, audio language. TV system switches between PAL and NTSC mode. Use password and rating to set parental restrictions for child use.



## Remote Control and Keyboard Plate

1. Press the "set up" from Remote into the setting interface, this is same to Press the  from Keyboard Plate.
2. And then Press  from Remote or Press  from Keyboard Plate to adjust your choices.
3. UP/DOWN/RIGHT/LEFT ARROWS  Use the buttons to navigate the various menus and screens for the monitor and DVD systems.

# DVD Functions

## Fast Reverse Searching(▶▶)

### [DVD]

Pressing FR button repeatedly changes the play mode as follow:

OSD	CONDITION
X2	2X rewind search
X4	4X rewind search
X8	8X rewind search
X20	20X rewind search
PLAY	Play

### [CD]

Pressing FR button repeatedly changes the play mode as follow:

OSD	CONDITION
X2	2X rewind search
X4	4X rewind search
X8	8X rewind search
X20	20X rewind search
PLAY	Play

### [MP3]

Pressing FR button repeatedly changes the play mode as follows:

OSD	CONDITION
X2	2X rewind search
X4	4X rewind search
X8	8X rewind search
X20	20X rewind search
PLAY	Play

## Fast Forward Searching(◀◀)

### [DVD]

Pressing FF button repeatedly changes the play mode as follow:

OSD	CONDITION
X2	2X forward search
X4	4X forward search
X8	8X forward search
X20	20X forward search
PLAY	Play

### [CD]

Pressing FF button repeatedly changes the play mode as follow:

OSD	CONDITION
X2	2X forward search
X4	4X forward search
X8	8X forward search
X20	20X forward search
PLAY	Play

### [MP3]

Pressing FF button repeatedly changes the play mode as follows:

OSD	CONDITION
X2	2X forward search
X4	4X forward search
X8	8X forward search
X20	20X forward search
PLAY	Play

# DVD Functions

## Subtitle(SUB-T)

### [DVD]

This button is used to select the language for the on-screen display system.  
(This title menu may vary, depending on the particular DVD.)

## Title

### [DVD]

Used to display the title menu of the loaded DVD disc.  
This function is only present on discs which support it.

## Slow

### [DVD]

Use this button to play a disc in slow-forward.  
Slow playback can be done at six different speeds. Pressing this button repeatedly decreases the speed in steps. Pressing the seven time returns playback to the normal speed.

OSD	CONDITION
SF 1 / 2	2X slow forward
SF 1 / 3	3X slow forward
SF 1 / 4	4X slow forward
SF 1 / 5	5X slow forward
SF 1/6	6X slow forward
SF 1/7	7X slow forward
▶	Play

# DVD Setup

## ■ Sound

### Down Mix

Use this option to change the audio output format.  
(Availabe only if the disc supports available audio type.)

1. Press the SETUP buttons to move to Preference.
2. Press the ◀/▶ buttons to move to Preference.
3. Press the ◀/▶ buttons to move to Sound.
4. Press the SETUP button.

### FM RF

Use this option to change the FM transmitter frequency  
(FM function include 87.7/88.1/88.5/88.9/107.1/107.5/107.9/off)

1. Press the SETUP buttons to move to Preference.
2. Press the ◀/▶ buttons to move to Preference.
3. Press the ▲/▼ buttons to move to Sound.
4. Press the SETUP button.

### IR RF

Use this option to change the IR transmitter frequency (IR include A B off)

### Volume

Use this option to adjust the audio output level of the speaker form 0 to 15.

## ■ System

### Language

Use this option to set the OSD language (English/Chinese/Italian/Spanish/Portuguese/French/Deutsch). (Available only if the disc supports available audio type.)

1. Press the SETUP buttons to move to Preference.
2. Press the ◀/▶ buttons to move to Preference.
3. Press the ◀/▶ buttons to move to Sound.
4. Press the SETUP button.

### OSD Ouraion

Use this option to set the Menu display time (5/10/30/60seconds/Never)

1. Press the SETUP buttons to move to Preference.
2. Press the ◀/▶ buttons to move to Preference.
3. Press the ◀/▶ buttons to move to Sound.
4. Press the SETUP button.

### Reset

If you select Reset ,all the settings of the Setup Menu will be returned to the factory default settings. except for Parental Level, Region and Password values.

## Display

### [DVD]

Pressing the DISPLAY button on the remote control changes the play mode as follows:

OSD	CONDITION
DVD TT 2/2 CH 1/15 00:02:30	Elapsed time
1/3ENG 2CH 1/6 CHI OFF	Mode display
DVD TT 2/2 CH 1/15 00:02:30	Remain time
DVD TT 2/2 CH 1/15 00:07:30	Total elapsed time
DVD TT 2/2 CH 1/15 00:14:30	Total remain time

### [CD]

Pressing the display button displays information about the current CD on the screen as follows:

OSD	CONDITION
CDDA TRK 2/2 00:02:30	Elapsed time
CDDA TRK 2/2 00:05:30	Remain time
CDDA TRK 2/2 00:02:55	Total elapsed time
CDDA TRK 2/2 00:06:45	Total remain time

### [MP3]

Your DVD player will display the counter automatically when you play the MP3 disc.

OSD	CONDITION
USB TRK 2/2 00:02:30	Elapsed time
USB TRK 2/2 00:05:30	Remain time

## Number Buttons

### [DVD]

The 0 through 9 number buttons are used to enter the number of the track, the number of the DVD chapter.

### [CD]/[MP3]

Select a track by pressing the corresponding number button.

OSD	CONDITION
SELECT: __	Select track NO.

OSD	CONDITION
SELECT: __	Select track NO.

# DVD Functions

## Stop( ■ )

### [DVD]/[CD]

In DVD mode, Press STOP to stop playback. To resume playback, press PLAY/PAUSE. If you press STOP twice and then PLAY/PAUSE, the player will begin playback at the first scene of the movie.

	OSD	CONDITION
1	▶■	Stop
2	■	Disc Stop

### [MP3]

In MP3 mode, Pressing STOP will stop the audio playback. Press PLAY/PAUSE to begin playback of the first title on the disc.

## Arrows(◀/▶/▲/▼)

### [DVD]

In addition to navigating the various menus, you can use the arrow buttons to define the area of the screen you want to enlarge in ZOOM mode.

### [MP3]

After pressing STOP button, select the desired folder and set the condition by pressing ENTER button.

## Setup

Pressing the SETUP button opens the Setup Menu, where you can make and adjust DVD settings to suit your equipment and preferences.

## Menu

### [DVD]

Pressing the SETUP brings up the DVD disc menu. The content of this menu varies, depending on the programming of the disc.

# DVD Setup

## ■ Player

### 1. TV System

Choose the proper TV format appropriate to the monitor you have connected to the player from the following: PAL , NTSC or AUTO type.

1. Press the SETUP button during Disc stop mode.
2. Press the ◀ / ▶ buttons to move to Preference.
3. Press the ▲ / ▼ buttons to move to TV Type.
4. Press the SETUP button.

### 2. Screen Save

**ON:** Open screen saver.  
**OFF:** Turn off, Screen saver.

### 3. Aspect Ratio

In the Setup function called TV Display, you set the player to output the video signal at the same aspect ratio as your monitor. If the monitor is widescreen format, select "WIDE." If it is as "normal" screen (16:9), choose NORMAL/PS (Pan and Scan) or NORMAL L/B (Letterbox).



**Normal / PS**  
Choose this setting if you want the movie to fill the entire screen.  
(This might mean that the left and right edges won't be seen)



**Normal / LB**  
Choose this setting if you want to see the movie in its original aspect ratio.  
(The movie might appear with black bars at the top and bottom of the screen.)



**Wide**  
Choose this setting if your DVD Player is connected to a widescreen TV.  
(This option is available only if the disc has a 16:9 display aspect ratio.)

### 4. Password

Password Setup, which is required for using the Parental Controls settings, is divided into two modules: Turning on the Password function, and setting a Password. The first step is to turn it on in the Password Mode setting.

## DVD Setup

### 5. Resume

**ON:** Each time you turn off the unit or stop the disc, it will memorize the last play time. Next time you turn on the unit and play the same disc, the unit will play from that memorized point.

**OFF:** Disable the last memory function.

### 6. Audio Language

Use this option to set the subtitles language, language a variety of CHINESE ENGLISH JAPAN FRENCH SPANISH PORTUGUESE LATIN and GERMAN.

But these are no function, need to be in DVD mode according to the audio button.

## DVD Functions

### Eject

When this button is pressed, the disc is ejected. When this button is pressed for more than 3 seconds, the disc is unconditionally ejected. Use this function if you encounter difficulty ejecting a disc.

### Vol+/Vol-

Use these buttons to adjust the audio output level.

### Mute

Press MUTE to turn off the audio part of the currently playing program. Press it again to return the audio volume to the level at which you were last listening.

### Play or Pause(▶||)

Whenever this button is pressed, the mode switches from pause to play or play to pause.

OSD	CONDITION
▶	Play Disc
	Pause

### Audio

#### [DVD]

Change the audio output format.  
(Available only if the disc supports available audio type.)

OSD	CONDITION
[ENGLISH 2CH]	English Stereo
[CHINESE 2CH]	Chinese Stereo
[RUSSIAN 5.1CH]	Russian 5.1trach

#### [CD]/[MP3]

Changes the audio output format.  
(Available only of the disc supports available audio type.)

OSD	CONDITION
Stereo	Stereo
Mono Left	Mono Left
Mono Right	Mono Right